

STANDARD DEPARTURE
CHART-INSTRUMENT

VAR8°W

ATIS 127.45
APP 120.85(125.55)
TWR 118.1(124.3)

ZYTX SHENYANG/Taoxian
NDB RWY06

BEARINGS ARE MAGNETIC
ALTITUDES, ELEVATIONS
AND HEIGHTS IN METERS
DME DISTANCES IN
NAUTICAL MILES
DISTANCES IN KM

TL 3600
TA 3000
3300(QNH≥1031HPA)
2700(QNH≤979HPA)



KAIYUAN
114.9 KYU
CH 96X
N42 37.9E124 00.4

NUBKI
N41 58.8
E124 35.9
CAT A enroute ALT
CAT B.C.D 4500 or above

DAHUSHAN
116.5 DHN
CH 112X
N41 38.7E122 06.9

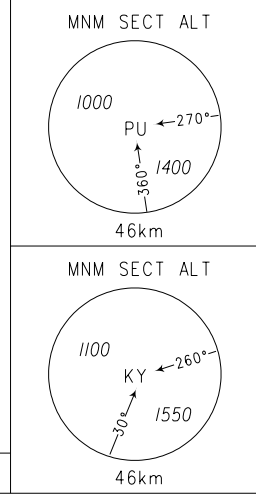
LMM
321 K

WANGBINGOU
365 KY
N41 42.3E123 44.8

DONGYANGJIAO
296 PU
N41 30.4E123 17.5

BIDIB
N41 24.4
E124 09.8
CAT A.B enroute ALT
CAT C.D 4500 or above

4800/5400/6000/6600 CAT C.D
3000/3600/4200/4800 CAT B
1800/2400 CAT A



Changes: Coordinates of 'DHN', 'KYU', 'PU', departure course angle.