

STANDARD DEPARTURE CHART-INSTRUMENT

VAR8°W

ATIS 127.45
APP 120.85(125.55)
TWR 118.1(124.3)

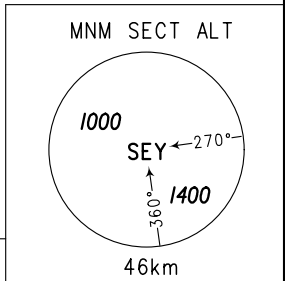
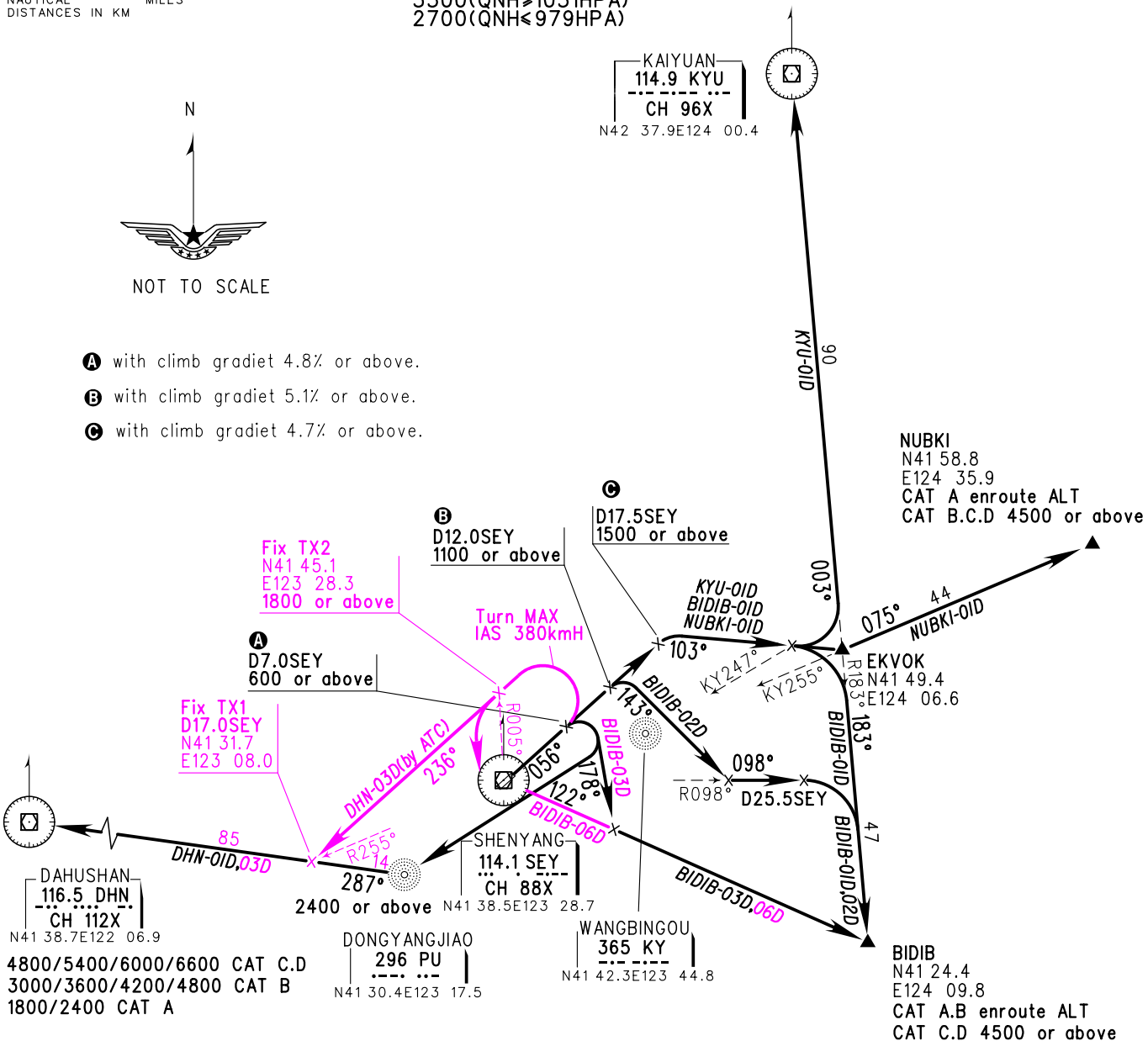
ZYTX SHENYANG/Taoxian
VOR RWY06

BEARINGS ARE MAGNETIC
ALTITUDES, ELEVATIONS
AND HEIGHTS IN METERS
DME DISTANCES IN
NAUTICAL MILES
DISTANCES IN KM

TL 3600
TA 3000
3300(QNH≥1031HPA)
2700(QNH≤979HPA)



- A** with climb gradient 4.8% or above.
- B** with climb gradient 5.1% or above.
- C** with climb gradient 4.7% or above.



Changes: New procedures.