

STANDARD DEPARTURE
CHART-INSTRUMENT

VAR 7° W

ATIS 126.65
D-ATIS 131.45
APP 123.85(127.95)
TWR 118.25(118.85)

ZYTL DALIAN/Zhoushuizi
RWY10

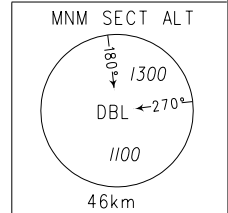
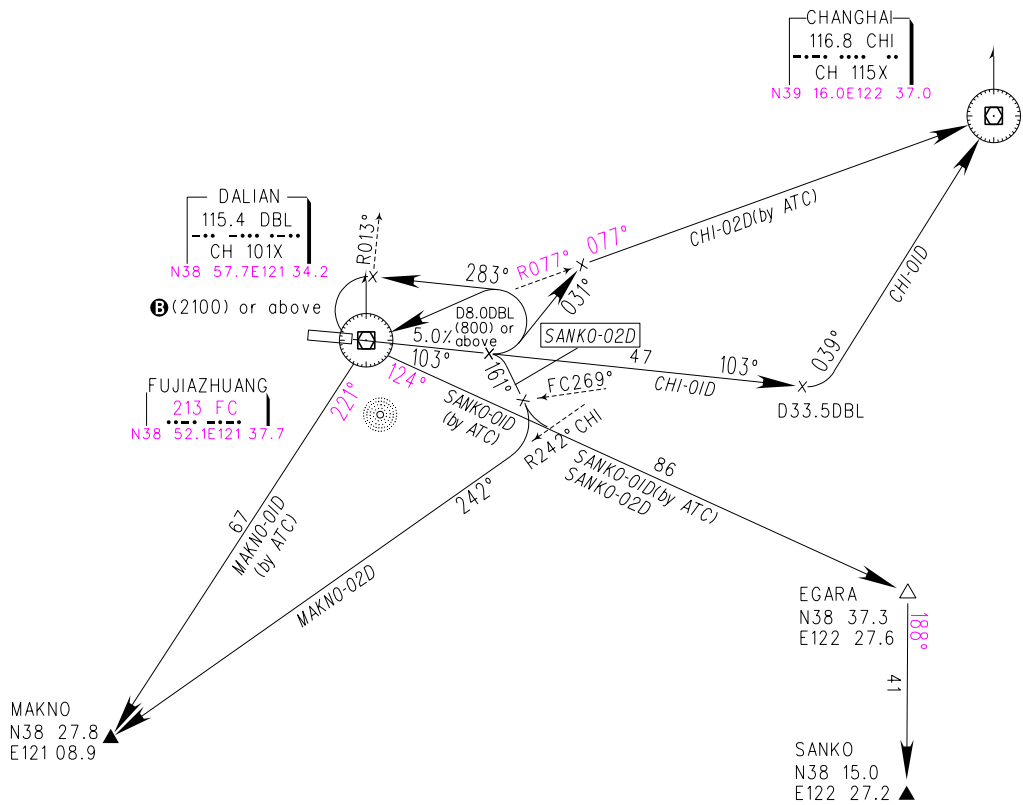
BEARINGS ARE MAGNETIC
ALTITUDES, ELEVATIONS
AND HEIGHTS IN METERS
DME DISTANCES IN
NAUTICAL MILES
DISTANCES IN KM

TL by ATC
TH by ATC



NOT TO SCALE

Departure turn MAX IAS 380kmH



Note: **A** An close-in obstacle: 337m east of RWY28 THR and 281m south of RCL,height 19.2m.
B MAKNO-01D,SANKO-01D;if aircraft climb performance is limited,contact ATC,then circling climb to the north of RWY,join in departure route until reaching (2100) or above over 'DBL'.

Changes: D-ATIS,coordinates of 'DBL','CHI','FC',departure course angle.