

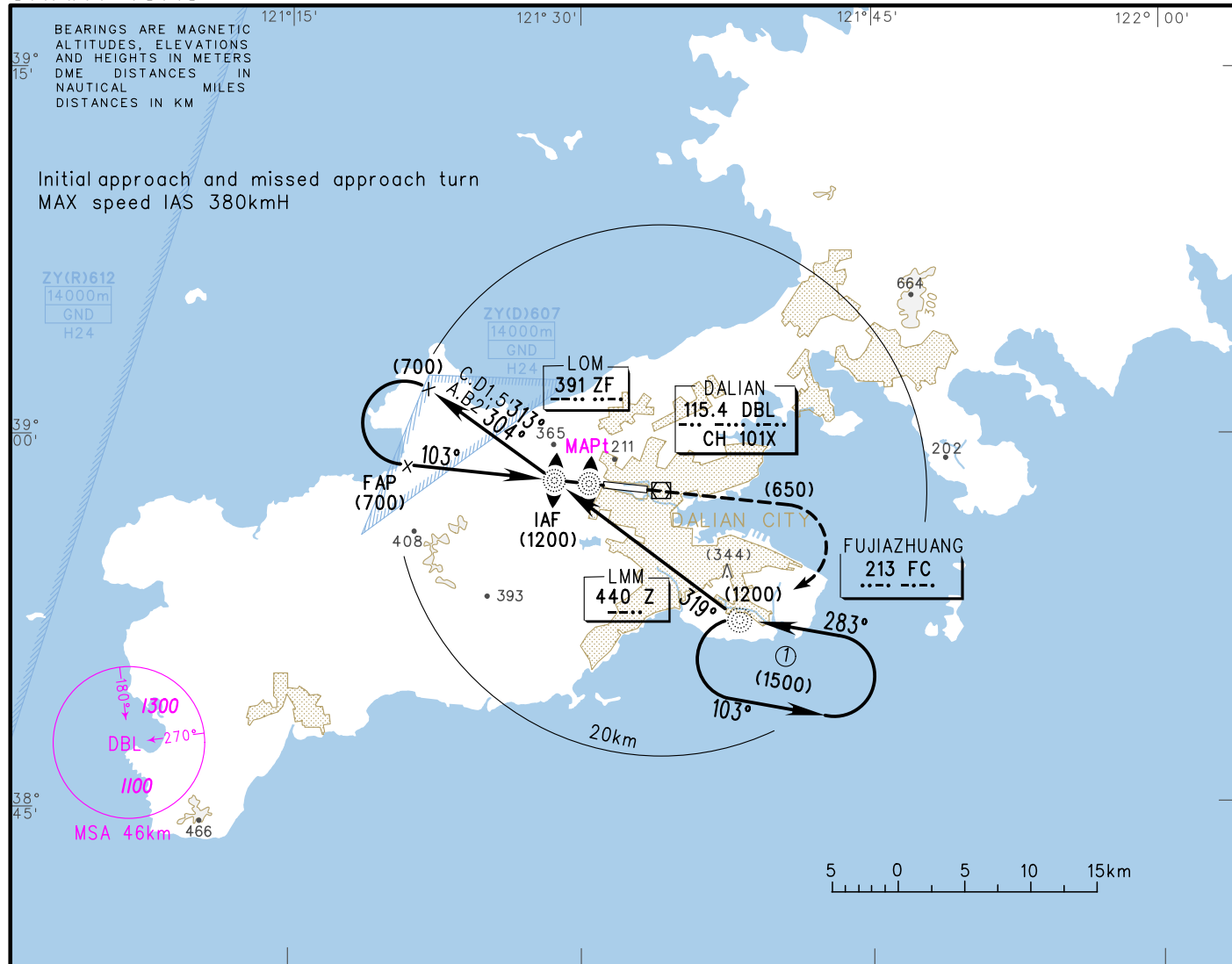
# INSTRUMENT APPROACH CHART-ICAO

VAR7° W

AERODROME ELEV 33  
HEIGHTS RELATED TO THR RWY10 ELEV 32

ATIS 126.65  
D-ATIS 131.45  
APP 123.85(127.95)  
TWR 118.25(118.85)

**ZYTL DALIAN/Zhoushuizi**  
NDB RWY10



DME ( ) (NM)	8	7	6	5	4	3	2	1
HGT (m)								

TL by ATC

MISSED APPROACH  
Climb straight ahead to (650), turn RIGHT inbound to FC at (900), contact ATC.

THR DISPLACED 200m  
DIST to displaced THR

					LOM-MAPt 2.6km						
					GS in kt	80	100	120	140	160	180
NDB (MDH) VIS	A	B	C	D	kmH	150	185	220	260	295	335
	(390)	(390)	(390)	(390)	Time min:sec	1:03	00:51	00:42	00:36	00:32	00:28
CIRCLING (MDH) VIS	A	B	C	D	Rate of descent m/s	2.2	2.7	3.2	3.8	4.3	4.8
	(450)	(450)	(480)	(480)	Changes: Conversion table, MSA.						