

INSTRUMENT APPROACH CHART-ICAO

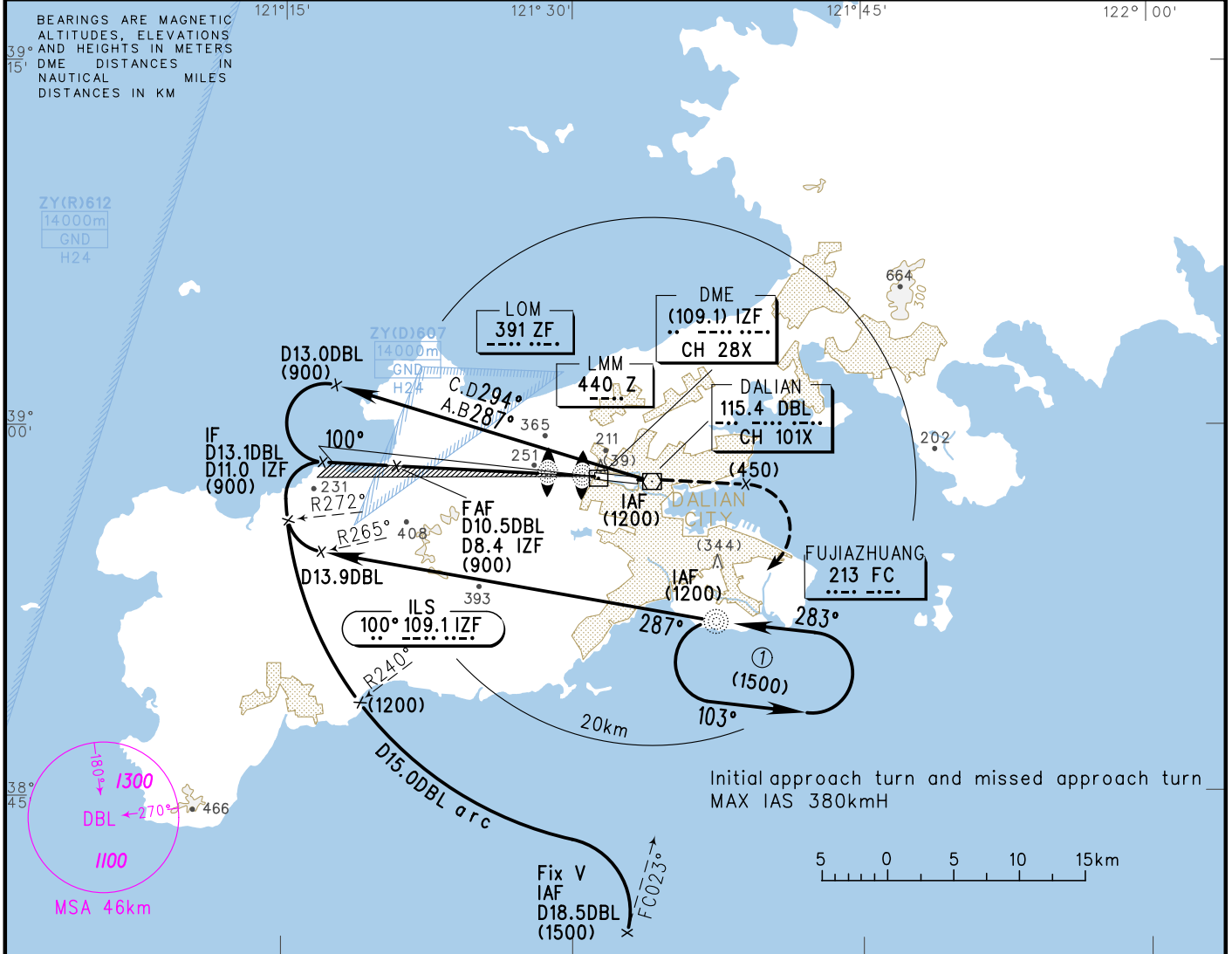
VAR 7° W

AERODROME ELEV 33
HEIGHTS RELATED TO THR RWY10 ELEV 32

ATIS 126.65
D-ATIS 131.45
APP 123.85(127.95)
TWR 118.25(118.85)

ZYTL DALIAN/Zhoushuizi

ILS/DME RWY10



GP INOP	DME (IZF) (NM)	8	7	6	5	4	3	2
	HGT (m)	(854)	(748)	(641)	(534)	(427)		

TL by ATC
TH by ATC

MISSED APPROACH
Climb straight ahead to (450), turn RIGHT inbound to FC at (900), contact ATC.

Note: RWY HDG 103°
LLZ OFFSET 3° TO N

RDH=18m THR DISPLACED 200m

ILS/DME (DH) RVR/VIS	FAF-MAPt(GP INOP) 14.2km			
	A	B	C	D
(115) 1000/1000	(115) 1000/1000	(115) 1000/1000	(115) 1000/1000	(120) 1000/1000
GP INOP (MDH) VIS	(330) 2000	(330) 2400	(330) 4000	(330) 4400
CIRCLING (MDH) VIS	(450) 2000	(450) 2400	(480) 4000	(480) 4400

GS in kt	80	100	120	140	160	180
Time min:sec	5:45	4:36	3:50	3:17	2:53	2:33
Rate of descent m/s	2.4	3.0	3.5	4.2	4.7	5.4

Changes: Conversion table, MSA.