

BEARINGS ARE MAGNETIC
ALTITUDES, ELEVATIONS
AND HEIGHTS IN METERS
DME DISTANCES IN
NAUTICAL MILES
DISTANCES IN KM

WUXI
113.9 VMB
CH 86X
N31 44.6E120 11.5

CAT C.D.E 3900/4500
6300
CAT B 3900
CAT A 1500

SASAN
R150°
D11.3VMB
N31 35.4
E120 19.2

R302°
D28.0SHA
N31 25.8
E120 51.1

R304°
D22.5SHA
N31 24.0
E120 57.0
1500

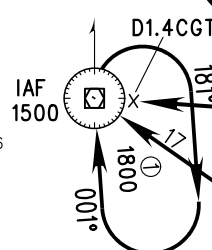
EKIMU
IAF
R310°
D14.0SHA
N31 21.1
E121 06.6
1200

TL 3600
TA 3000
3300(QNH>1031HPA)
2700(QNH<979HPA)

R350°
D9.2SHA
N31 21.9
E121 17.2

NANXIANG
208 PK
N31 17.0E121 19.8

CHONGGU
112.5 CGT
CH 72X
N31 12.6E121 11.6



HONGQIAO
117.2 SHA
CH 119X
N31 12.9E121 20.0



JIUTING
109.6 JTN
CH 33X
N31 07.4E121 20.5

PUDONG
116.9 PUD
CH 116X
N31 10.3E121 47.0

D30.0JTN
N30 37.8
E121 16.3

D34.5JTN
N30 33.0
E121 15.7
2700

DADAT
D12.0AND
N30 27.0
E121 14.8
3500

ANDONG
114.8 AND
CH 95X
N30 15.4E121 13.3

D22.0JTN
N30 45.9
E121 25.5
2700

IDNIK
D18.0AND
N30 26.0
E121 29.9
4500

ALT by ATC
2100(from Ningbo)

ATIS 132.25
D-ATIS 132.25

TWR 118.1(124.3)(E)
118.65(118.25)(W)

APP (ZSSS) 120.3(119.75)	AP01 126.65(128.05)	AP05 126.3(120.65)
125.4(119.20)	AP02 121.1(124.05)	AP06 127.75(124.05)
123.8(119.20)	AP03 127.75(124.05)	AP07
	AP04	AP08

Changes: D-ATIS FREQ, MSA, procedure.

