

STANDARD DEPARTURE CHART-INSTRUMENT

VAR5° W

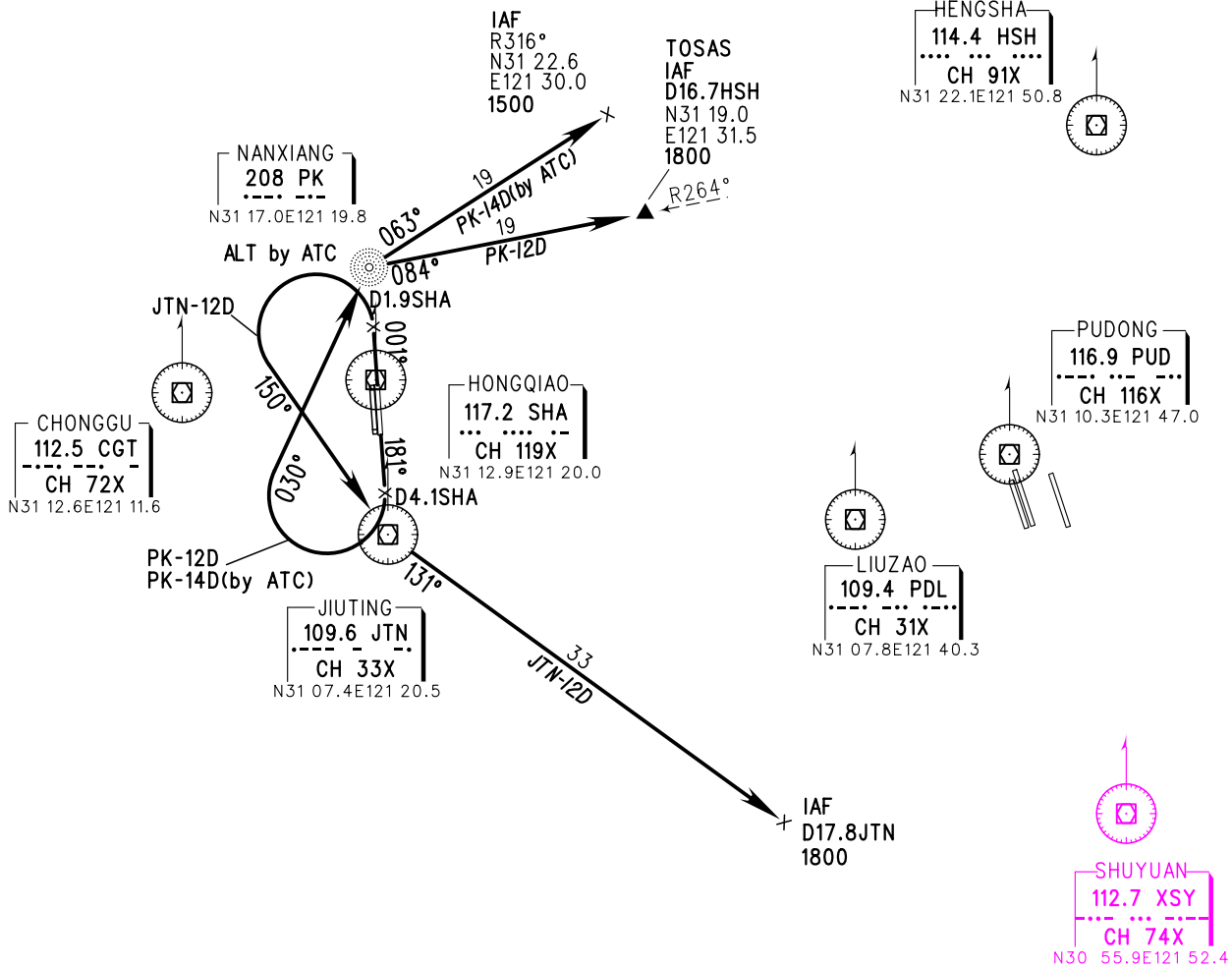
ZSSS SHANGHAI/Hongqiao

RWY 18L/18R/36L/36R

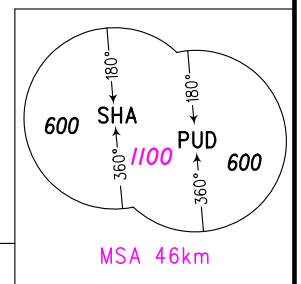
BEARINGS ARE MAGNETIC
ALTITUDES, ELEVATIONS
AND HEIGHTS IN METERS
DME DISTANCES IN
NAUTICAL MILES
DISTANCES IN KM

ATIS 132.25		TWR 118.1(124.3)(E)	
D-ATIS 132.25		118.65(118.25)(W)	
APP 120.3(119.75)	AP01	126.65(128.05)	AP05
(ZSSS) 125.4(119.75)	AP02	126.3(120.65)	AP06
125.85(119.20)	AP03	121.1(124.05)	AP07
123.8(119.20)	AP04	127.75(124.05)	AP08

TL 3600
TA 3000
3300(QNH≥1031HPA)
2700(QNH≤979HPA)



This chart is used as FERRY ROUTE from Hongqiao to Pudong:
Aircraft taking-off from Hongqiao to Pudong,
should follow JTN-12D, PK-12D, or PK-14D, then
follow relative IAPs of Pudong airport.



Changes: D-ATIS FREQ, MSA, 'XSY'.