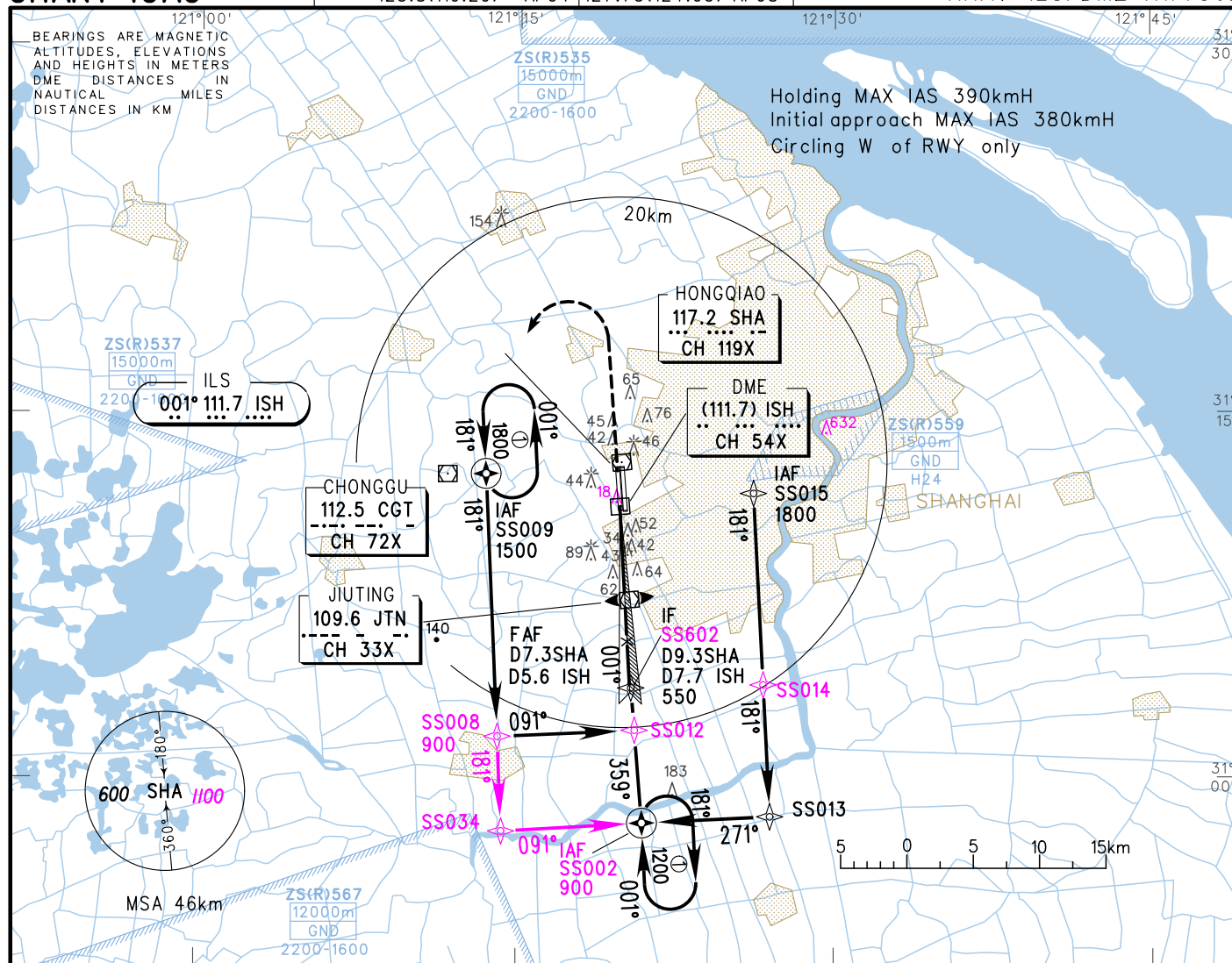


VAR5°W AERODROME ELEV 3 RWY36L THR ELEV 3

ATIS 132.25		TWR 118.1(124.3)(E)	
D-ATIS 132.25		118.65(118.25)(W)	
APP (ZSSS) 120.3(119.75)	AP01 126.65(128.05)	AP05 126.3(120.65)	AP06 121.1(124.05)
125.4(119.75)	AP02 121.1(124.05)	AP07 123.8(119.20)	AP08 127.75(124.05)
125.85(119.20)	AP03 127.75(124.05)		
123.8(119.20)	AP04 127.75(124.05)		

INSTRUMENT APPROACH CHART-ICAO

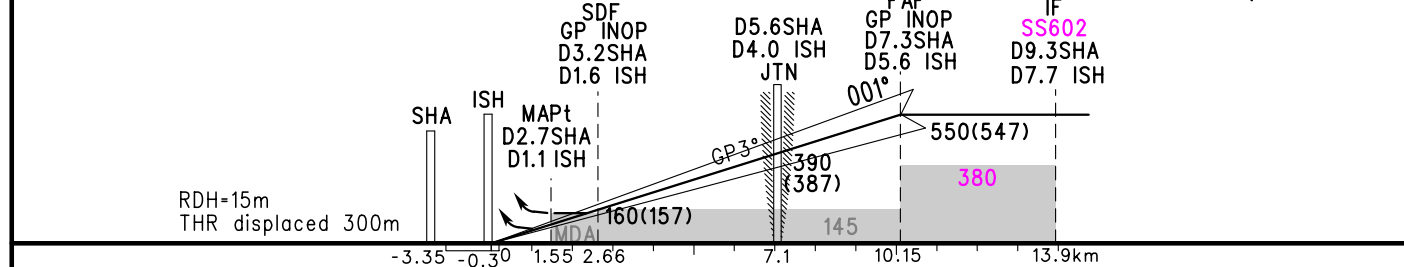
ZSSS SHANGHAI/Hongqiao RNAV ILS/DME RWY36L



GP INOP	DME (ISH) (NM)	1	2	3	4	5	6	7
	ALT (m)		195	292	390	487	550	

MISSED APPROACH
Climb straight ahead to 300, turn LEFT to CGT at 900.

TL 3600
TA 3000
3300(QNH>1031HPA)
2700(QNH<979HPA)



	A	B	C	D	FAF-MAPt(GP INOP) 8.6km						
	ILS/DME DA(H) RVR/VIS	63(60) 550/800	68(65) 550/800	68(65) 600/800	GS in kt	80	100	120	140	160	180
GP INOP MDA(H) VIS	130(127) 1600	130(127) 1800	130(127) 2000		min:sec	3:29	2:47	2:19	1:59	1:44	1:33
					Rate of descent m/s	2.2	2.7	3.2	3.8	4.3	4.9
CIRCLING MDA(H) VIS	210(207) 2800	210(207) 3200	240(237) 4400	240(237) 4800	Changes: D-ATIS, MSA, convertion table, OBSTs.						