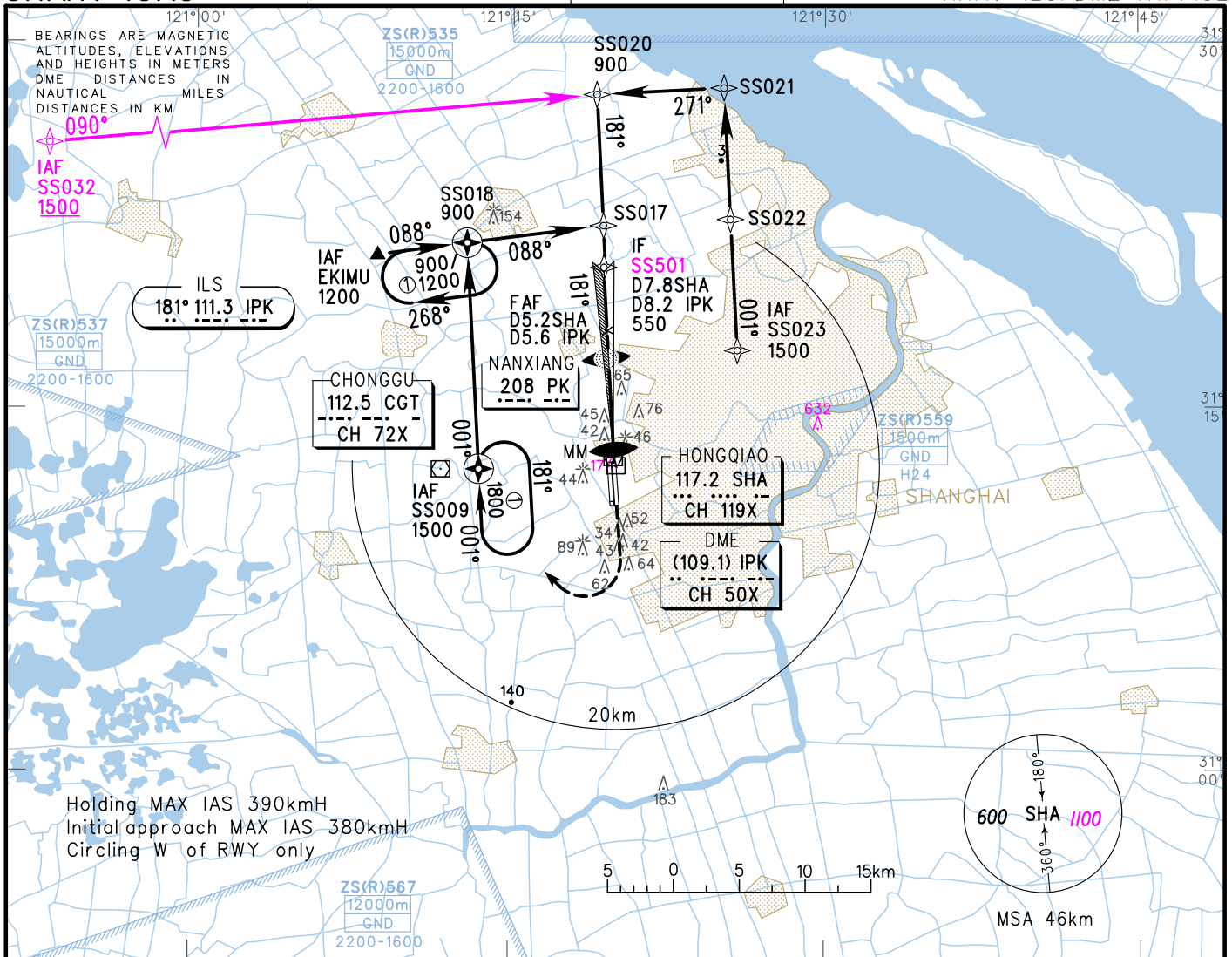


VAR5° W AERODROME ELEV 3 RWY18L THR ELEV 2

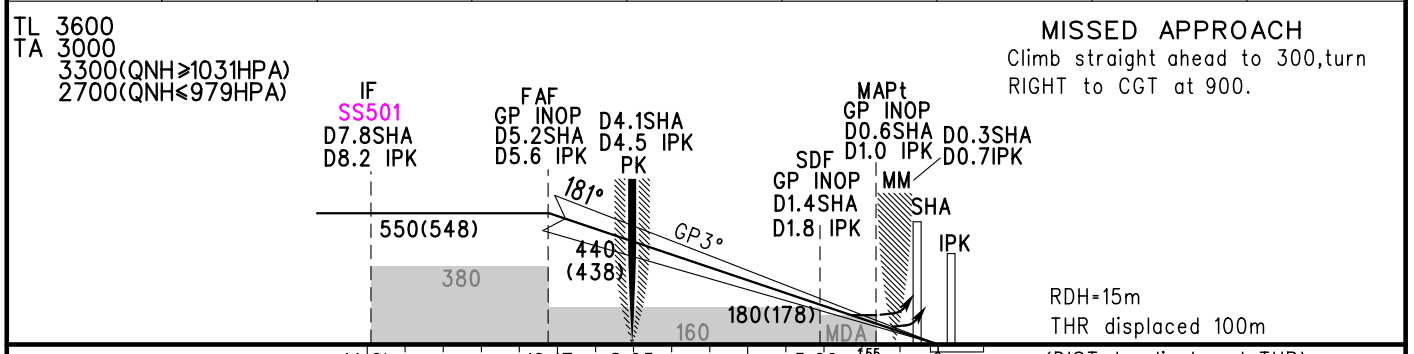
ATIS 132.25		TWR 118.1(124.3)(E)	
D-ATIS 131.45		118.65(118.25)(W)	
APP (ZSSS) 120.3(119.75)	AP01 125.4(119.75)	126.65(128.05)	AP05 126.3(120.65)
125.85(119.20)	AP02 123.8(119.20)	121.1(124.05)	AP06 127.75(124.05)
	AP03		AP07
	AP04		AP08

INSTRUMENT APPROACH CHART-ICAO

ZSSS SHANGHAI/Hongqiao RNAV ILS/DME RWY18L



GP INOP	DME (IPK) (NM)	7	6	5	4	3	2	1
	ALT (m)			487	390	292	195	



	FAF-MAPt(GP INOP) 8.62km			
	A	B	C	D
ILS/DME DA(H) RVR/VIS	62(60) 550/800	67(65) 550/800	67(65) 600/800	
GP INOP MDA(H) VIS	130(128) 1600	130(128) 1800	130(128) 2000	
CIRCLING MDA(H) VIS	210(207) 2800	210(207) 3200	240(237) 4400	240(237) 4800

GS in kt	150	185	220	260	295	335
Time min:sec	3:29	2:48	2:20	2:00	1:45	1:33
Rate of descent m/s	2.2	2.7	3.2	3.8	4.3	4.9

Changes: D-ATIS, MSA, conversion table, OBSTs.