

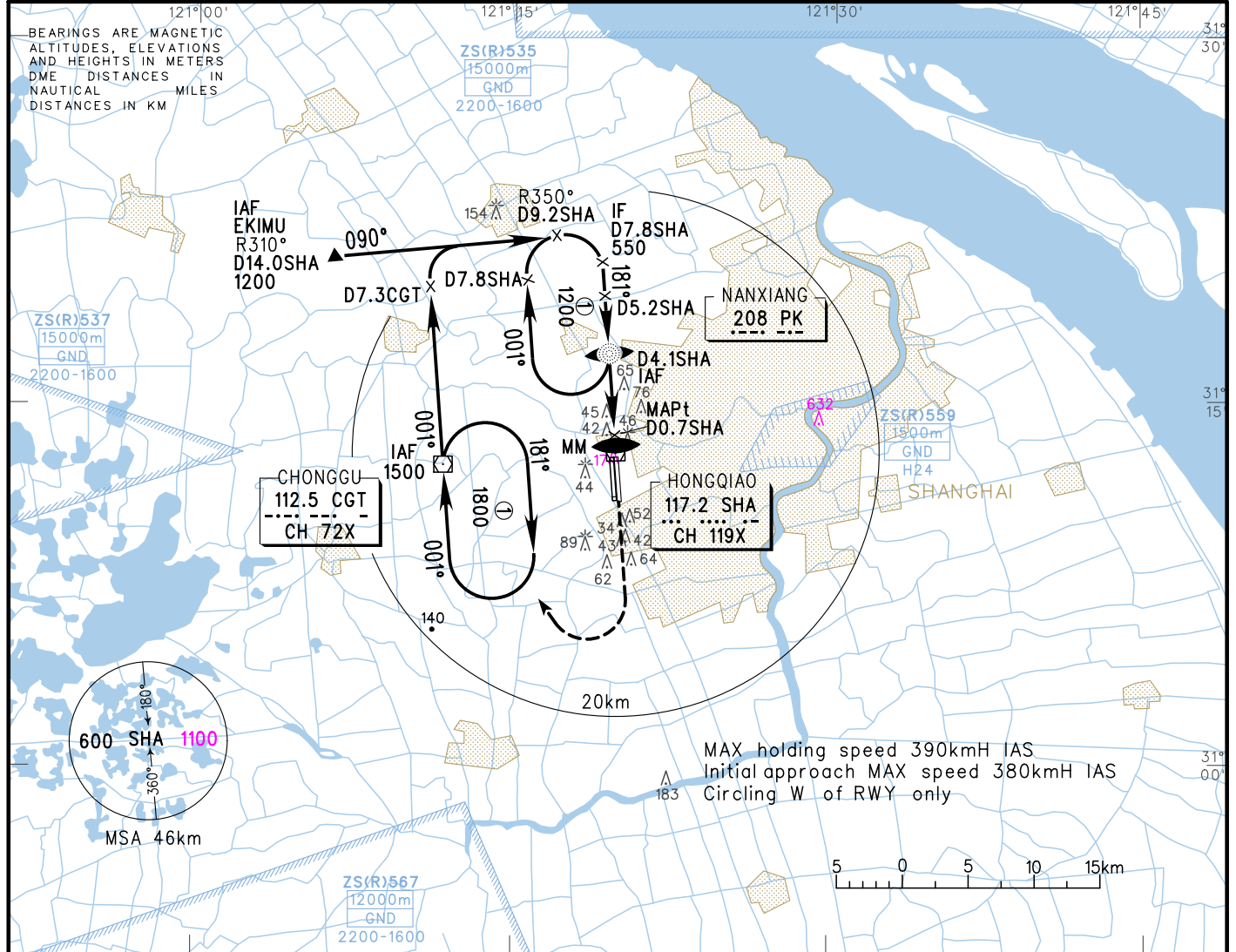
VAR5° W AERODROME ELEV 3 RWY18L THR ELEV 2

ATIS 132.25		TWR 118.1(124.3)(E)	
D-ATIS 132.25		118.65(118.25)(W)	
APP (ZSSS) 120.3(119.75)	AP01 126.65(128.05)	AP05 126.65(128.05)	AP06 126.3(120.65)
125.4(119.75)	AP02 121.1(124.05)	AP07 121.1(124.05)	AP08 127.75(124.05)
125.85(119.20)	AP03 123.8(119.20)	AP04 127.75(124.05)	

INSTRUMENT APPROACH CHART-ICAO

ZSSS SHANGHAI/Hongqiao

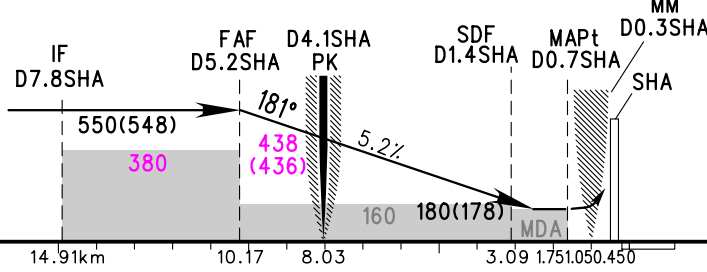
VOR/DME RWY18L



DME (SHA) (NM)	8	7	6	5	4	3	2	1
ALT (m)				526	429	332	235	

TL 3600
TA 3000
3300(QNH≥1031HPA)
2700(QNH≤979HPA)

MISSED APPROACH
Climb straight ahead to 400, turn RIGHT to CGT at 90°.



VOR/DME MDA(H) VIS	A	B	C	D	FAF-MAPt 8.42km						
	140(138) 2200	140(138) 2400	140(138) 2600		GS in kt	80	100	120	140	160	180
CIRCLING MDA(H) VIS	210(207) 2800	210(207) 3200	240(237) 4400	240(237) 4800	Time min:sec	3:25	2:44	2:16	1:57	1:42	1:31
					Rate of descent m/s	2.2	2.7	3.2	3.8	4.3	4.9

Changes: D-ATIS, MSA, conversion table, OBSTs.