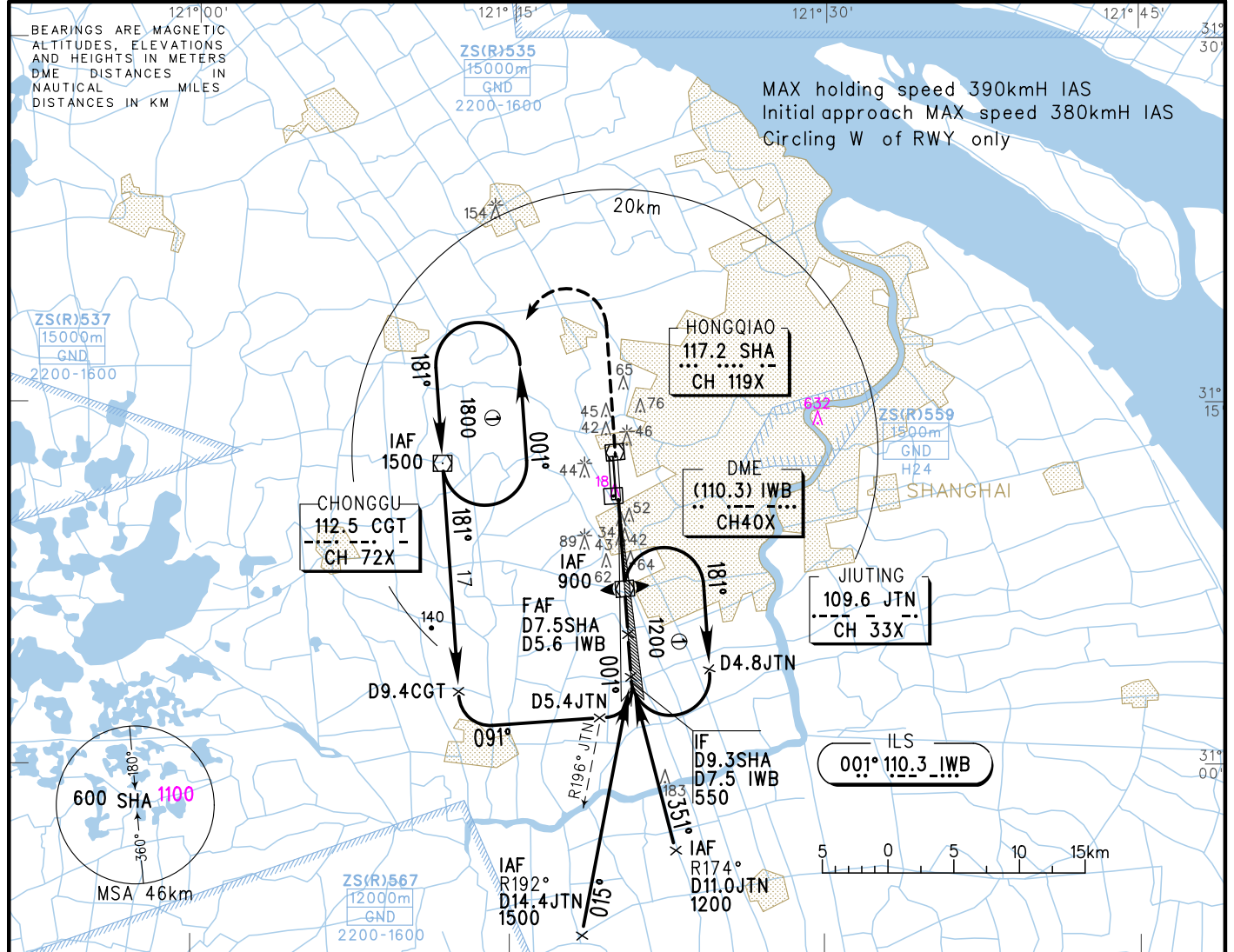


VAR5° W AERODROME ELEV 3 RWY36R THR ELEV 3

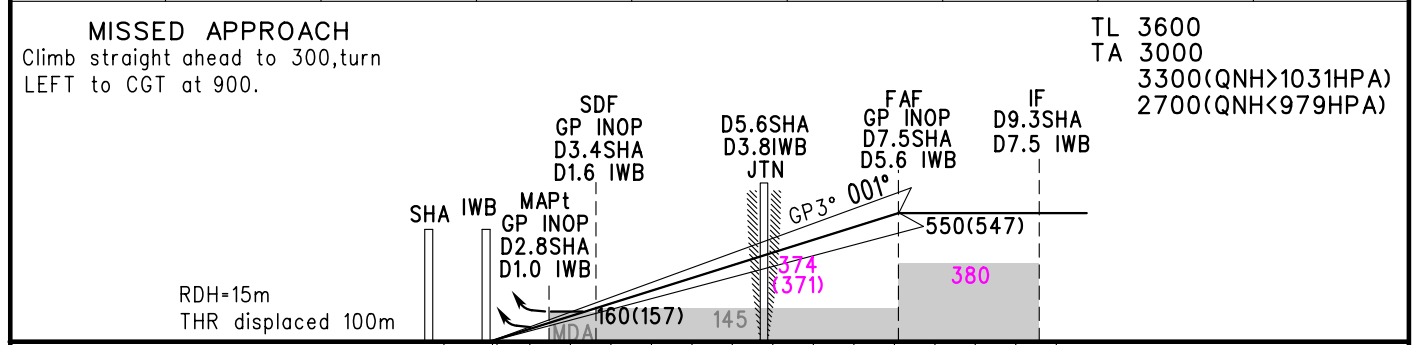
ATIS 132.25		TWR 118.1(124.3)(E)	
D-ATIS 132.25		118.65(118.25)(W)	
APP (ZSSS) 120.3(119.75)	AP01 126.65(128.05)	AP05 126.3(120.65)	AP06 125.85(119.20)
125.4(119.75)	AP02 121.1(124.05)	AP07 127.75(124.05)	AP08 123.8(119.20)
125.85(119.20)	AP03 127.75(124.05)		
123.8(119.20)	AP04		

INSTRUMENT APPROACH CHART-ICAO

ZSSS SHANGHAI/Hongqiao ILS/DME RWY36R



GP INOP	DME (IWB) (NM)	1	2	3	4	5	6	7
	ALT (m)		195	292	389	486		



				FAF-MAPt(GP INOP) 8.6km					
ILS/DME	DA(H)	63(60)		68(65)		68(65)			
	RVR/VIS	550/800		550/800		600/800			
GP INOP	MDA(H)	130(127)		130(127)		130(127)			
	VIS	1600		1800		2000			
CIRCLING	MDA(H)	210(207)	210(207)	240(237)	240(237)				
	VIS	2800	3200	4400	4800				
GS in kt		80	100	120	140	160	180		
Time min:sec		3:29	2:47	2:19	1:59	1:44	1:33		
Rate of descent m/s		2.2	2.7	3.2	3.8	4.3	4.9		

Changes: D-ATIS, MSA, conversion table, OBSTs.