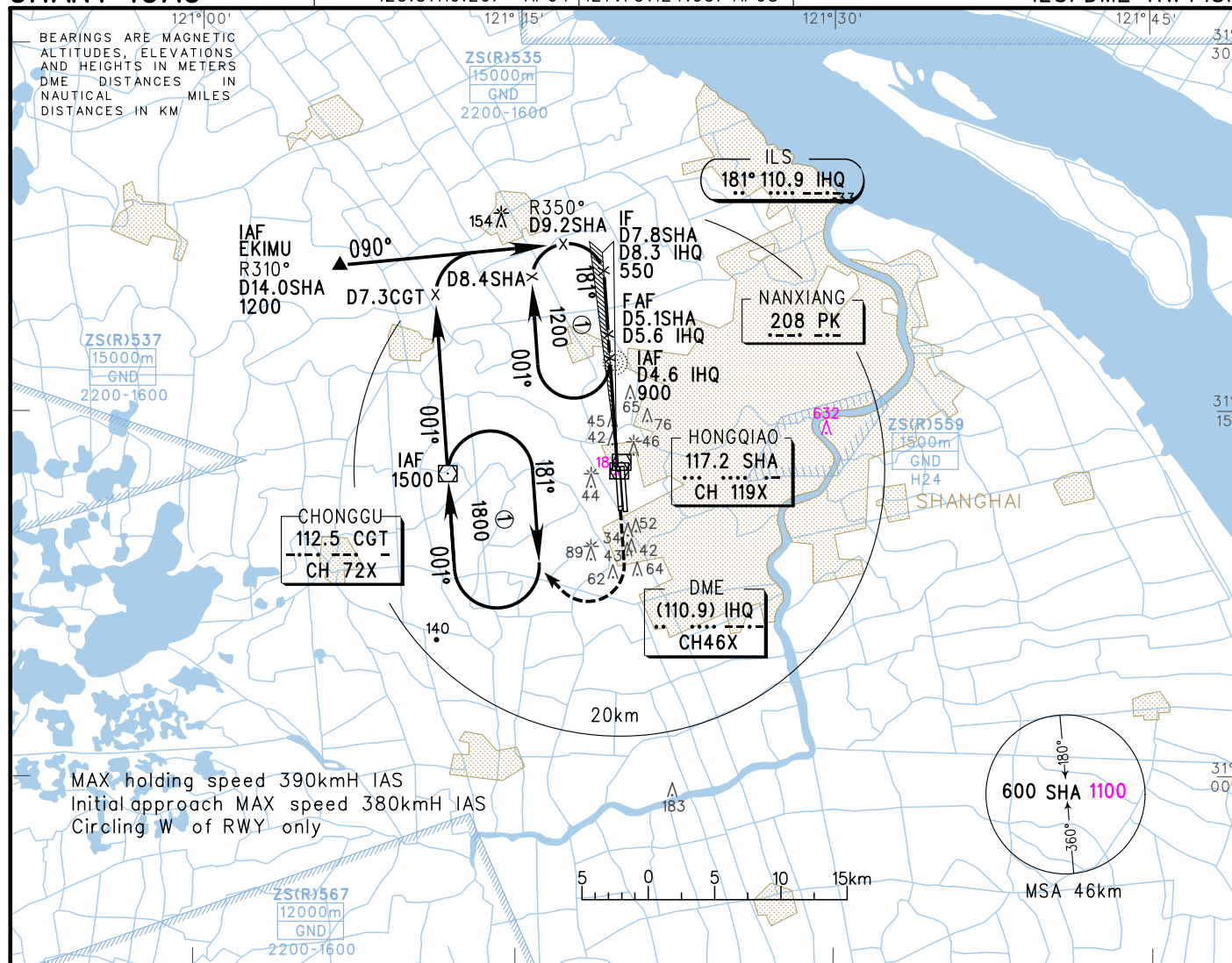


VAR5° W AERODROME ELEV 3 RWY18R THR ELEV 3

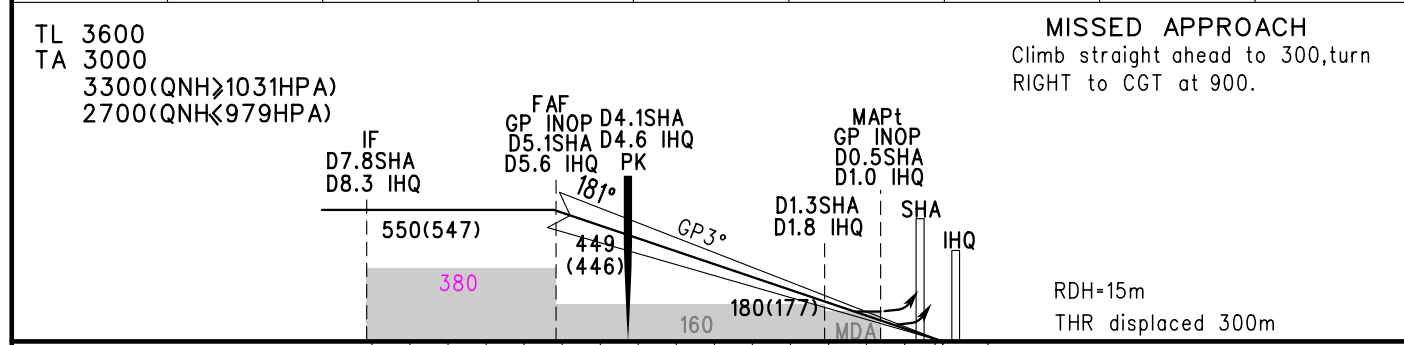
ATIS 132.25 D-ATIS 132.25		TWR 118.1(124.3)(E) 118.65(118.25)(W)	
APP (ZSSS) 120.3(119.75)	AP01 126.65(128.05)	AP05 126.3(120.65)	AP06 121.1(124.05)
125.4(119.75)	AP02 121.1(124.05)	AP07 127.75(124.05)	AP08
125.85(119.20)	AP03		
123.8(119.20)	AP04		

INSTRUMENT APPROACH CHART-ICAO

ZSSS SHANGHAI/Hongqiao ILS/DME RWY18R



GP INOP	DME (IHQ) (NM)	7	6	5	4	3	2	1
	ALT (m)			487	390	292	195	



	FAF-MAPt(GP INOP) 8.6km			
	A	B	C	D
ILS/DME DA(H) RVR/VIS	63(60) 550/800		68(65) 550/800	68(65) 600/800
GP INOP MDA(H) VIS	130(127) 1600		130(127) 1800	130(127) 2000
CIRCLING MDA(H) VIS	210(207) 2800	210(207) 3200	240(237) 4400	240(237) 4800

GS in kt	80	100	120	140	160	180
Time min:sec	3:29	2:47	2:19	1:59	1:44	1:33
Rate of descent m/s	2.2	2.7	3.2	3.8	4.3	4.9

Changes: D-ATIS, MSA, conversion table, OBSTs.