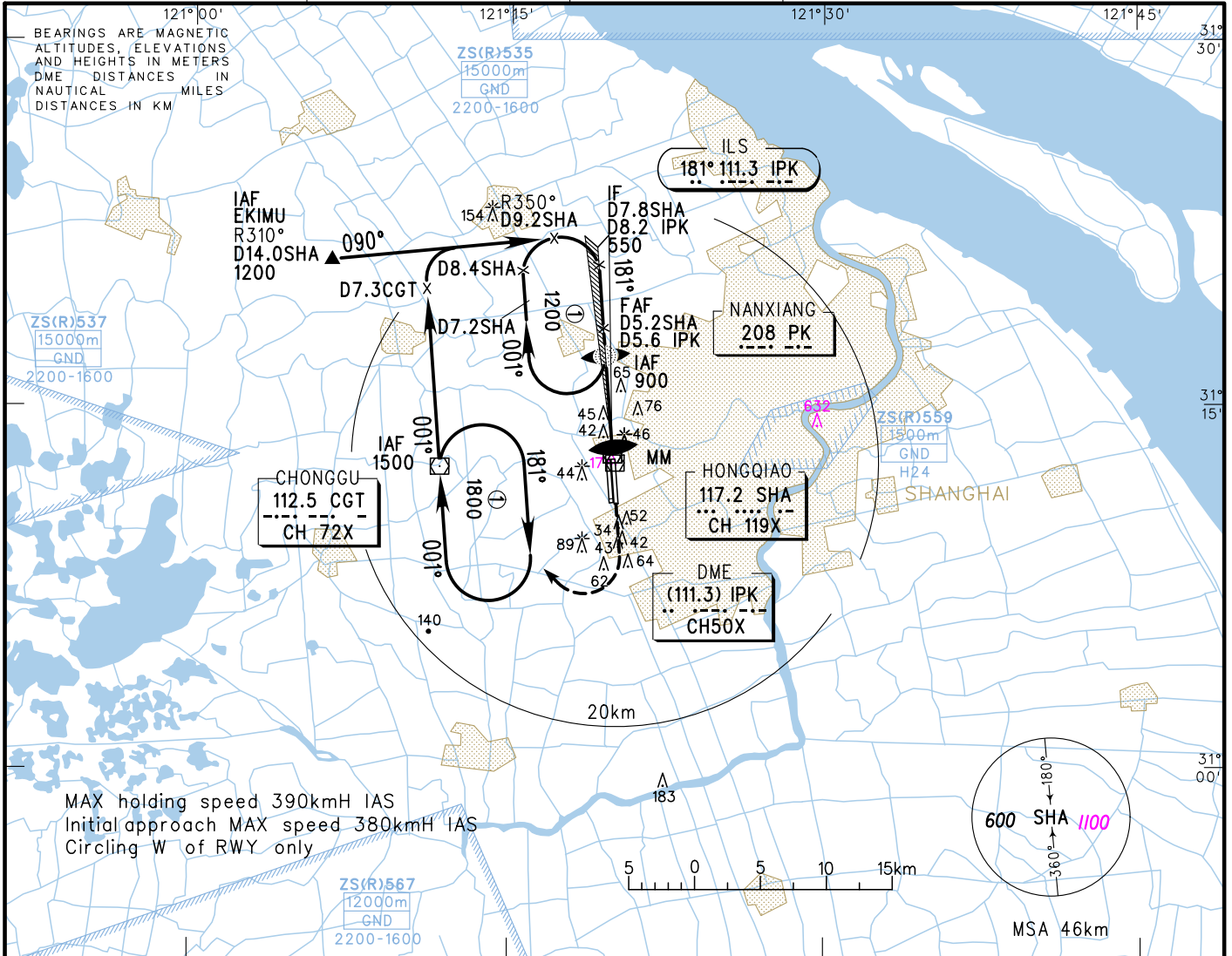


VAR5° W AERODROME ELEV 3 RWY18L THR ELEV 2

ATIS 132.25 D-ATIS 132.25		TWR 118.1(124.3)(E) 118.65(118.25)(W)	
APP (ZSSS) 120.3(119.75)	AP01 125.4(119.75)	126.65(128.05)	AP05 126.3(120.65)
125.85(119.20)	AP03 123.8(119.20)	121.1(124.05)	AP07 127.75(124.05)
	AP04		AP08

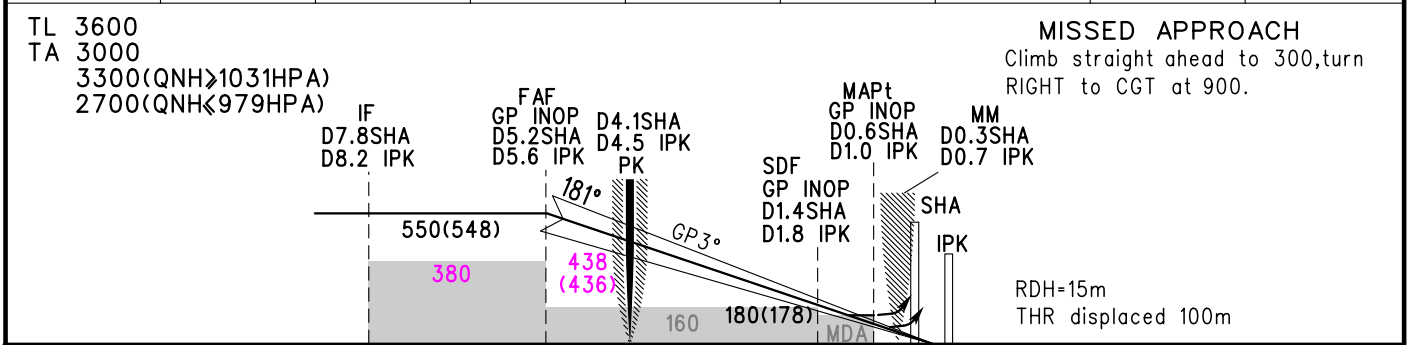
INSTRUMENT APPROACH CHART-ICAO

ZSSS SHANGHAI/Hongqiao ILS/DME RWY18L



MAX holding speed 390kmH IAS
Initial approach MAX speed 380kmH IAS
Circling W of RWY only

GP INOP	DME (IPK) (NM)	7	6	5	4	3	2	1
	ALT (m)			487	390	292	195	



	FAF-MAPt(GP INOP) 8.62km					
	A	B	C	D		
ILS/DME ^{DA(H)} _{RVR/VIS}	62(60) 550/800	67(65) 550/800	67(65) 600/800			
GP INOP ^{MDA(H)} _{VIS}	130(128) 1600	130(128) 1800	130(128) 2000			
CIRCLING ^{MDA(H)} _{VIS}	210(207) 2800	210(207) 3200	240(237) 4400	240(237) 4800		
GS in kt	80	100	120	140	160	180
Time min:sec	3:29	2:48	2:20	2:00	1:45	1:33
Rate of descent m/s	2.2	2.7	3.2	3.8	4.3	4.9

Changes: D-ATIS, MSA, conversion table, OBSTs.