

# STANDARD ARRIVAL CHART-INSTRUMENT

VAR6° W

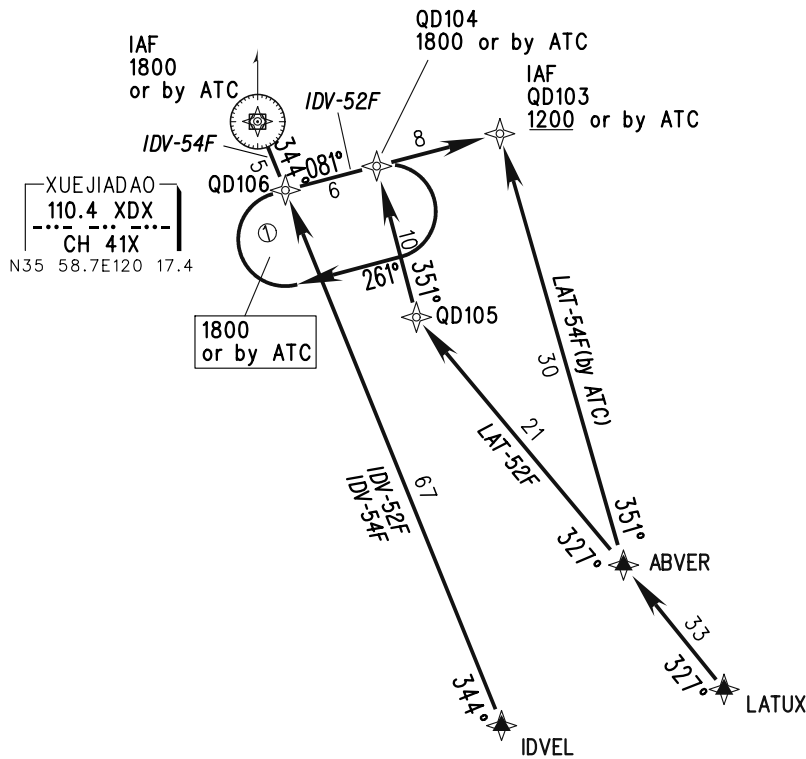
ATIS 127.2  
 D-ATIS 131.45  
 TWR 118.7(124.3)  
 APP 119.4(124.6)/AP01  
 121.15(124.6)/AP02

**ZSQD QINGDAO/Liuting**  
 RNAV Rwy35

BEARINGS ARE MAGNETIC  
 ALTITUDES, ELEVATIONS  
 AND HEIGHTS IN METERS  
 DME DISTANCES IN  
 NAUTICAL MILES  
 DISTANCES IN KM

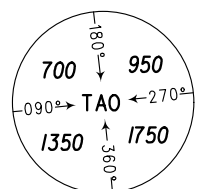
TL 3600  
 TA 3000  
 3300(QNH≥1031HPA)  
 2700(QNH≤979HPA)

1. RADAR REQUIRED
2. RNAV 1
3. GNSS REQUIRED



Note:  
 Initial approach MAX IAS 380kmH.  
 Holding MAX IAS 400kmH.

MNM SECT ALT



46km

Changes: New chart.