

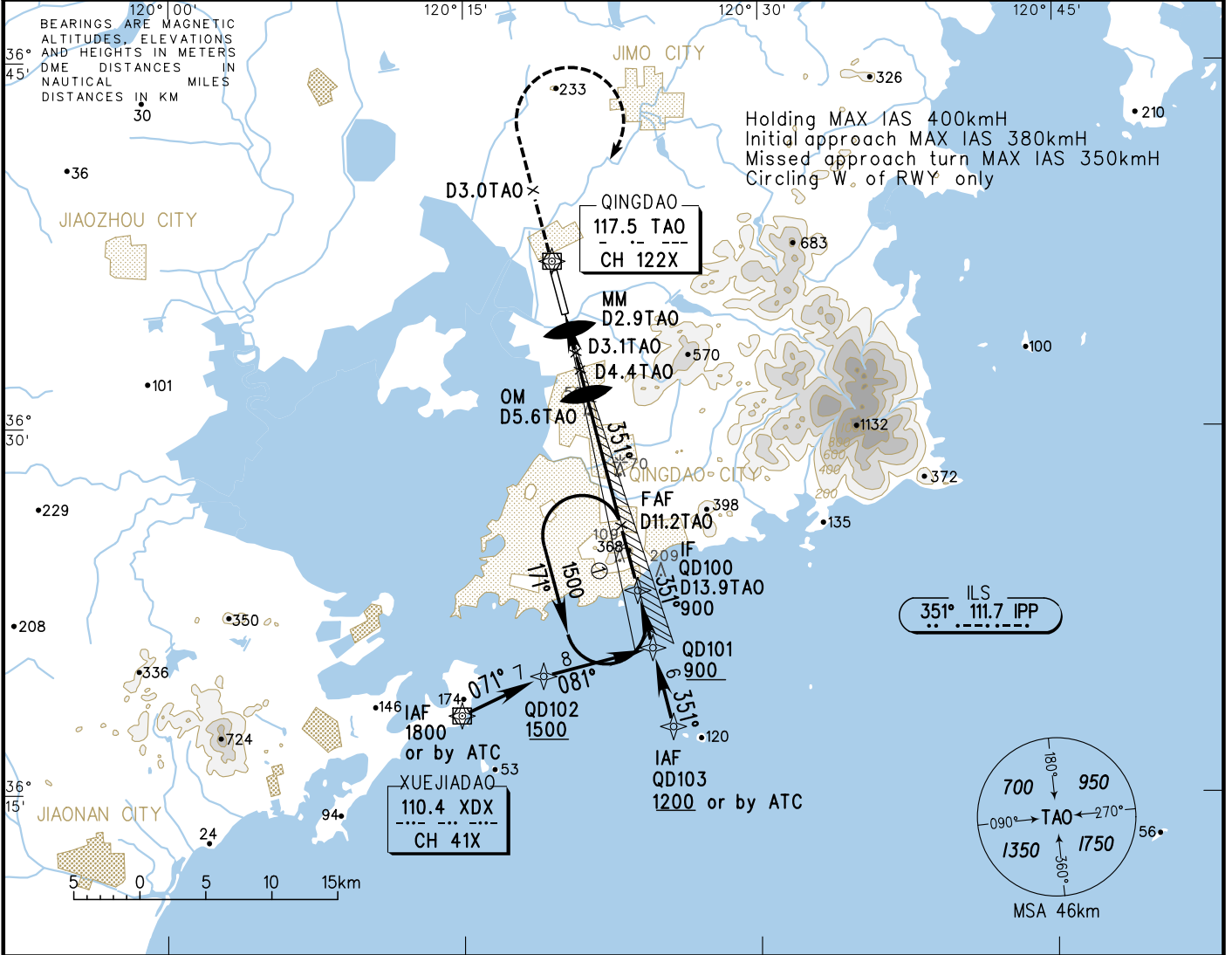
# INSTRUMENT APPROACH CHART-ICAO

VAR 6° W

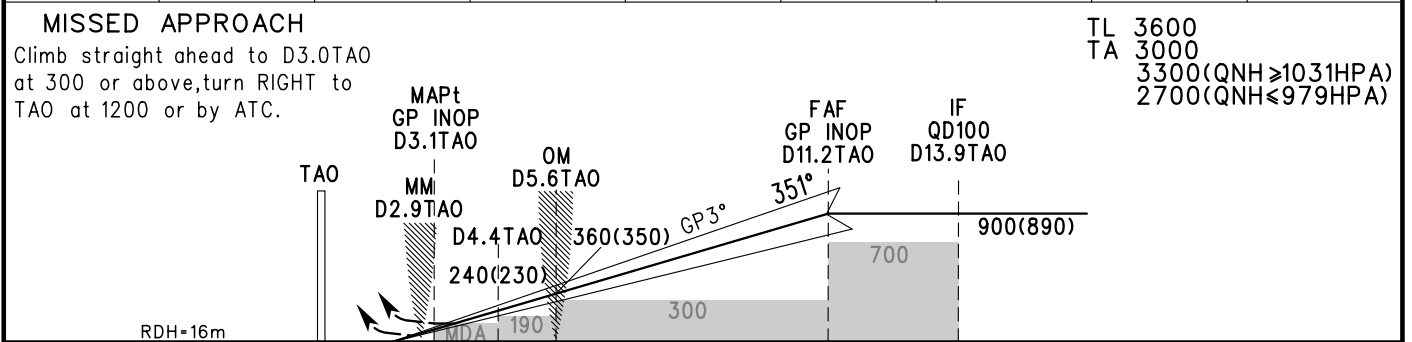
AERODROME ELEV 10  
HEIGHTS RELATED TO THR RWY35 ELEV 10

ATIS 127.2  
D-ATIS 131.45  
TWR 118.7(124.3)  
APP 119.4(124.6)/AP01  
121.15(124.6)/AP02

**ZSQD QINGDAO/Liuting**  
RNAV ILS/DME RWY35



GP INOP	DME (TAO) (NM)	4	5	6	7	8	9	10
	ALT (m)	198	295	392	490	587	684	779



	A	B	C	D	FAF-MAPt(GP INOP) 15.1km						
	ILS/DME DA(H) RVR/VIS	70(60) 550/800		75(65) 550/800	75(65) 600/800	GS in kmH	150	185	220	260	295
GP INOP MDA(H) VIS		140(130) 2000		140(130) 2200	Time min:sec	6:02	4:54	4:07	3:29	3:04	2:42
CIRCLING MDA(H) VIS	260(250) 2800	260(250) 3200	350(340) 4400	350(340) 5000	Rate of descent m/s	2.2	2.7	3.2	3.8	4.3	4.9

Changes: New chart.