

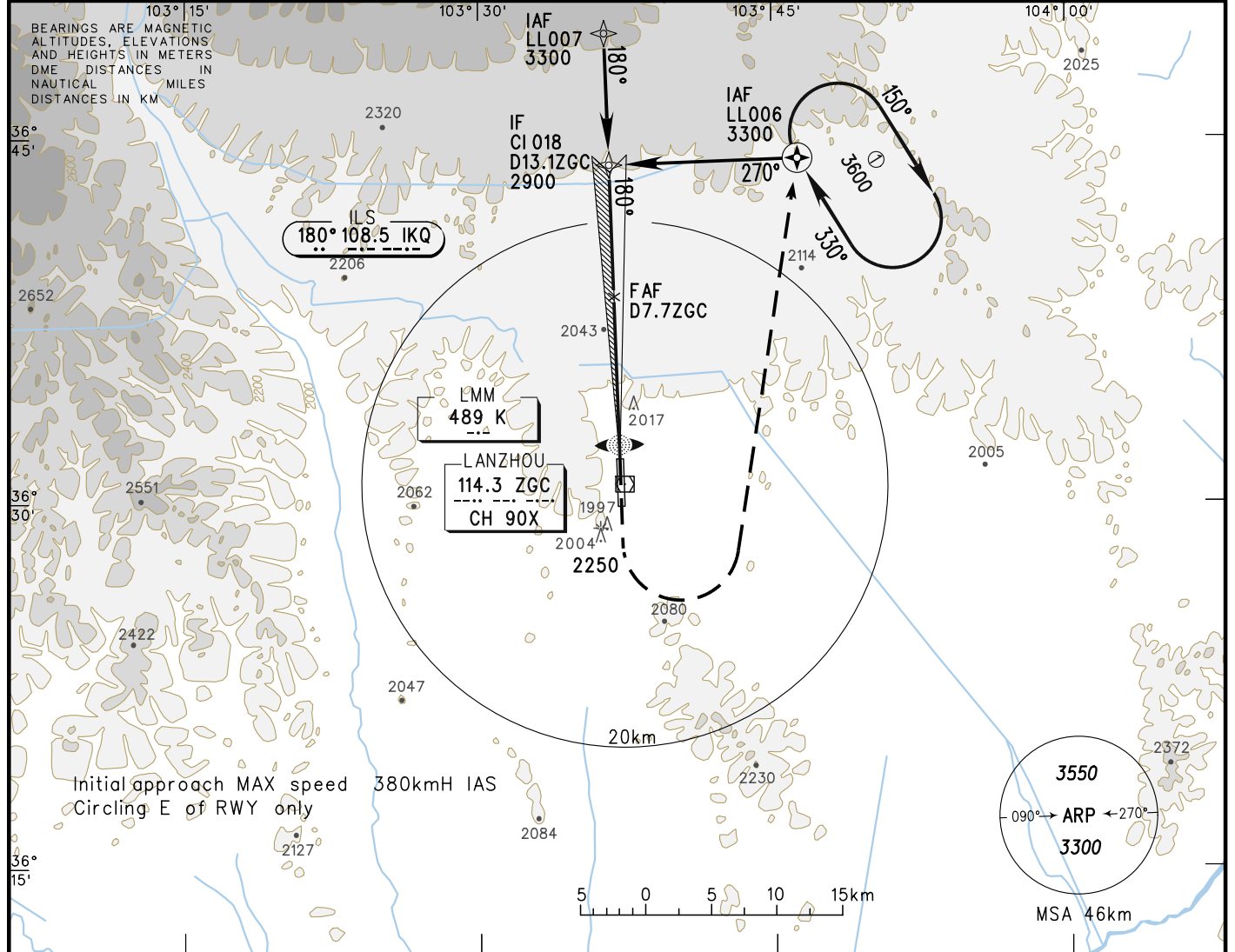
INSTRUMENT APPROACH CHART-ICAO

VAR 2° W

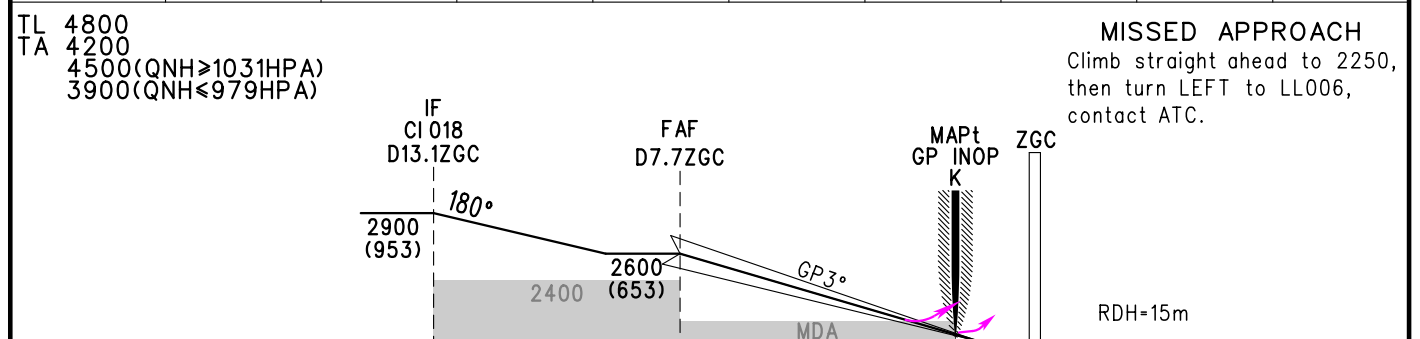
AERODROME ELEV 1947
 HEIGHTS RELATED TO THR RWY18 ELEV 1947

ATIS 128.45
 APP 120.25(127.9)
 TWR 118.1(130.0)

ZLLL LANZHOU/Zhongchuan
 RNAV ILS/DME RWY18



GP INOP	DME (ZGC) (NM)	8	7	6	5	4	3	2	1
	ALT (m)		2535	2438	2342	2245	2148		



TL 4800 TA 4200 4500(QNH≥1031HPA) 3900(QNH≤979HPA)	MISSED APPROACH Climb straight ahead to 2250, then turn LEFT to LL006, contact ATC.										
IF CI 018 D13.1ZGC		FAF D7.7ZGC		MAPt GP INOP K	ZGC	RDH=15m					
2900 (953)		2600 (653)									
22.2km		12.2		1.0							
	A	B	C	D	FAF-MAPt 11.2km						
ILS/DME DA(H) RVR/VIS	2007(60) 550/800				GS in kt kmH	80 150	100 185	120 220	140 260	160 295	180 335
GP INOP MDA(H) VIS	2100(153) 2100				Time min:sec	04:32	03:38	03:01	02:36	02:16	02:01
CIRCLING MDA(H) VIS	2210(263) 3700		2240(293) 4000	2240(293) 4400	Rate of descent m/s	2.2	2.7	3.2	3.8	4.3	4.9
Changes: Landing minima.											