

D-ATIS 131.45  
 ATIS 127.45(departure) 126.85(arrival)  
 Zhuhai APP(R) TM01 120.35(127.95)  
 TM02 124.25(126.0)  
 TM03 123.85(126.0)  
 TM04 124.75(127.95)

# STANDARD DEPARTURE CHART-INSTRUMENT

VAR2° W

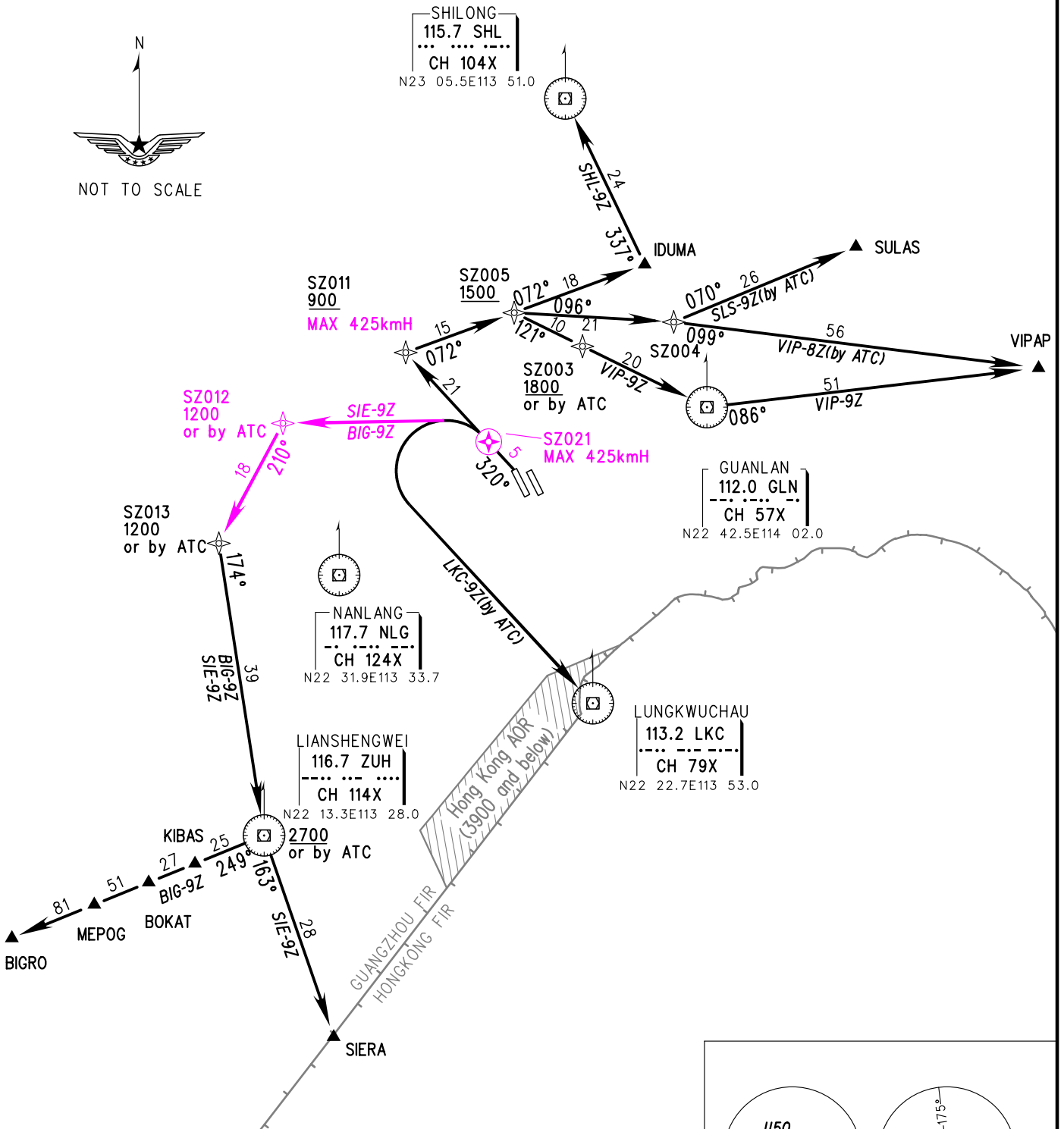
TWR 130.35(118.05)(E)  
 118.45(130.35)(W)

## ZGSZ SHENZHEN/Baoan

RNAV Rwy34

BEARINGS ARE MAGNETIC  
 ALTITUDES, ELEVATIONS  
 AND HEIGHTS IN METERS  
 DME DISTANCES IN  
 NAUTICAL MILES  
 DISTANCES IN KM

- |                                 |                     |
|---------------------------------|---------------------|
| 1. RADAR REQUIRED               | TL 3600(QNH<980HPA) |
| 2. RNAV 1                       | 3300(QNH>980HPA)    |
| 3. GNSS or DME/DME/IRU REQUIRED | TA 2700             |



- Note:**
- ① Departure turn speed MAX IAS 425kmH.
  - ② When two RWYs used for independent departure, SHL-9Z, VIP-8Z/9Z, SLS-9Z need ATC clearance.

Changes: TWR FREQ, SZ012, SZ021, BIG-9Z, SIE-9Z, speed limit.



MSA 46km

MSA 46km