

D-ATIS 131.45  
 ATIS 127.45(departure) 126.85(arrival)  
 Zhuhai APP(R) TM01 120.35(127.95)  
 TM02 124.25(126.0)  
 TM03 123.85(126.0)  
 TM04 124.75(127.95)

# STANDARD DEPARTURE CHART-INSTRUMENT

VAR2° W

TWR 130.35(118.05)(E)  
 118.45(130.35)(W)

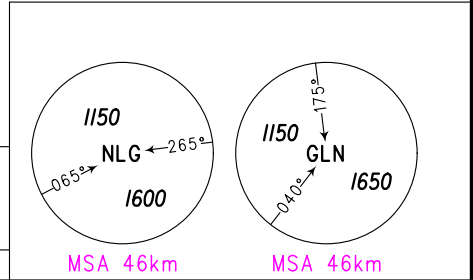
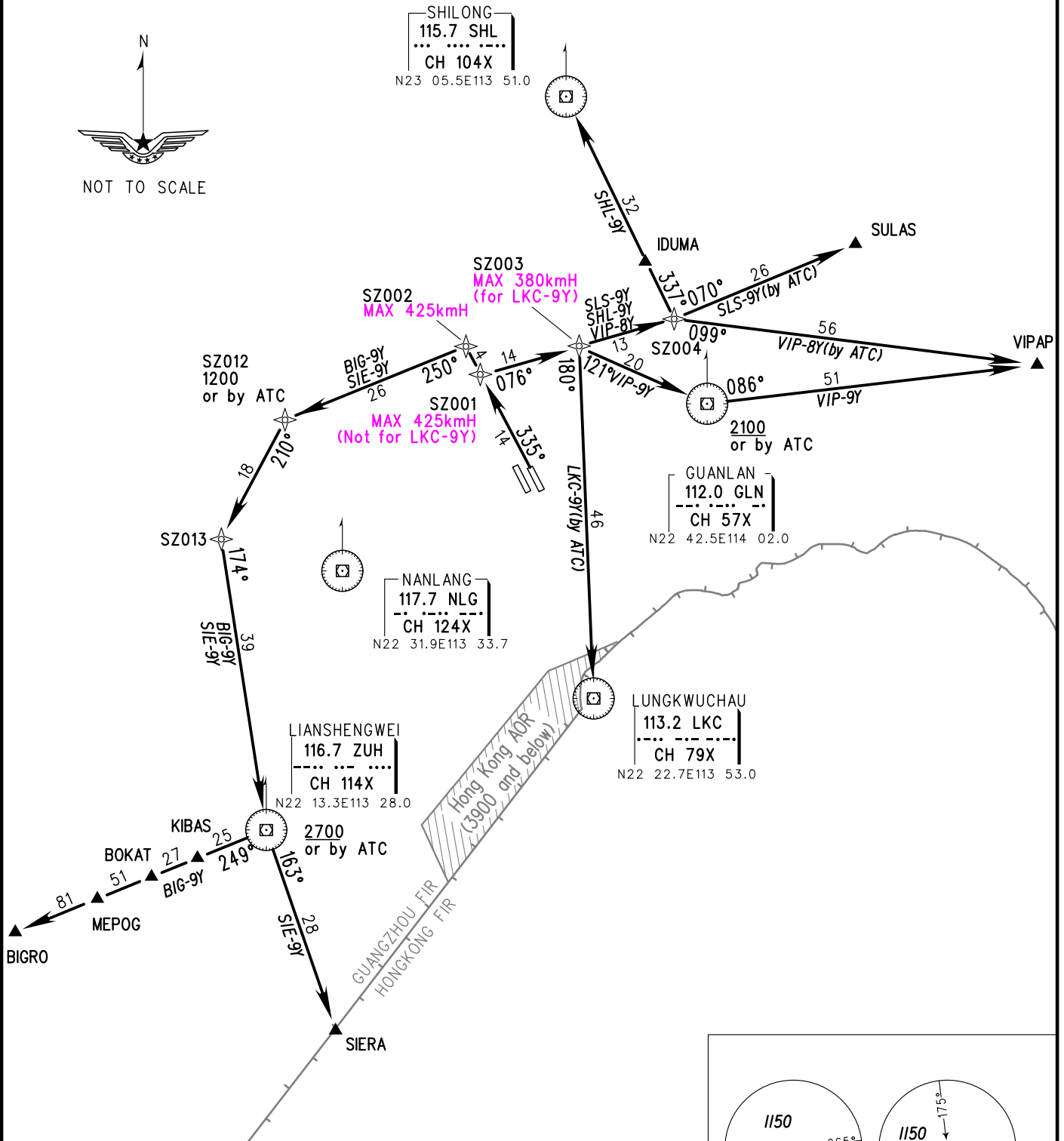
ZGSZ SHENZHEN/Baoan

RNAV RWY33

BEARINGS ARE MAGNETIC  
 ALTITUDES, ELEVATIONS  
 AND HEIGHTS IN METERS  
 DME DISTANCES IN  
 NAUTICAL MILES  
 DISTANCES IN KM

1. RADAR REQUIRED
2. RNAV 1
3. GNSS or DME/DME/IRU REQUIRED

TL 3600(QNH<980HPA)  
 3300(QNH>980HPA)  
 TA 2700



**Note:** ① Departure turn speed MAX IAS: LKC-9Y:380kmH; others: 425kmH.  
 ② When two RWYs used for independent departure, BIG-9Y, SIE-9Y need ATC clearance.

Changes: TWR FREQ, speed limit.