

D-ATIS 131.45
 ATIS 127.45(departure) 126.85(arrival)
 Zhuhai APP(R) TM01 120.35(127.95)
 TM02 124.25(126.0)
 TM03 123.85(126.0)
 TM04 124.75(127.95)

**STANDARD DEPARTURE
 CHART-INSTRUMENT**

VAR2° W

TWR 130.35(118.05)(E)
 118.45(130.35)(W)

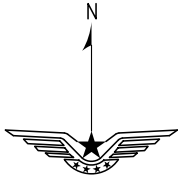
ZGSZ SHENZHEN/Baoan

RNAV RWY16

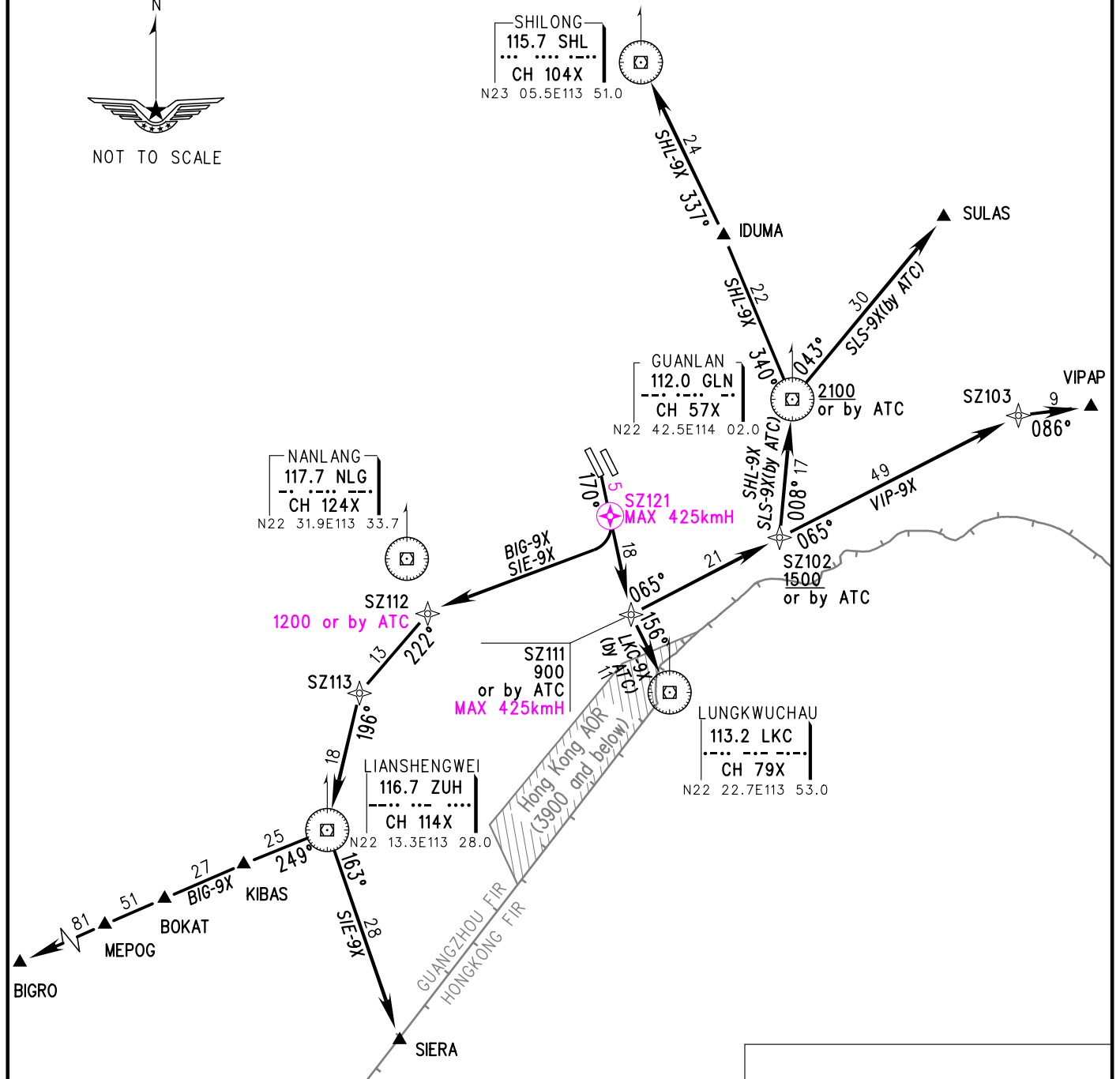
BEARINGS ARE MAGNETIC
 ALTITUDES, ELEVATIONS
 AND HEIGHTS IN METERS
 DME DISTANCES IN
 NAUTICAL MILES
 DISTANCES IN KM

1. RADAR REQUIRED
2. RNAV 1
3. GNSS or DME/DME/IRU REQUIRED

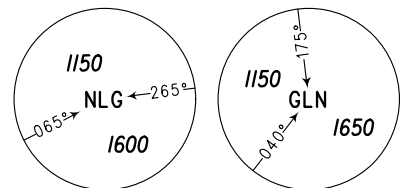
TL 3600(QNH<980HPA)
 3300(QNH>980HPA)
 TA 2700



NOT TO SCALE



- Note:**
- ① Deviation to south of R065° SHK is forbidden.
 - ② Departure turn speed MAX IAS 425kmH.
 - ③ When two RWYs used for independent departure, VIP-9X, SLS-9X, SHL-9X need ATC clearance.



MSA 46km

MSA 46km

Changes: TWR, FREQ, SZ121, speed limit.