

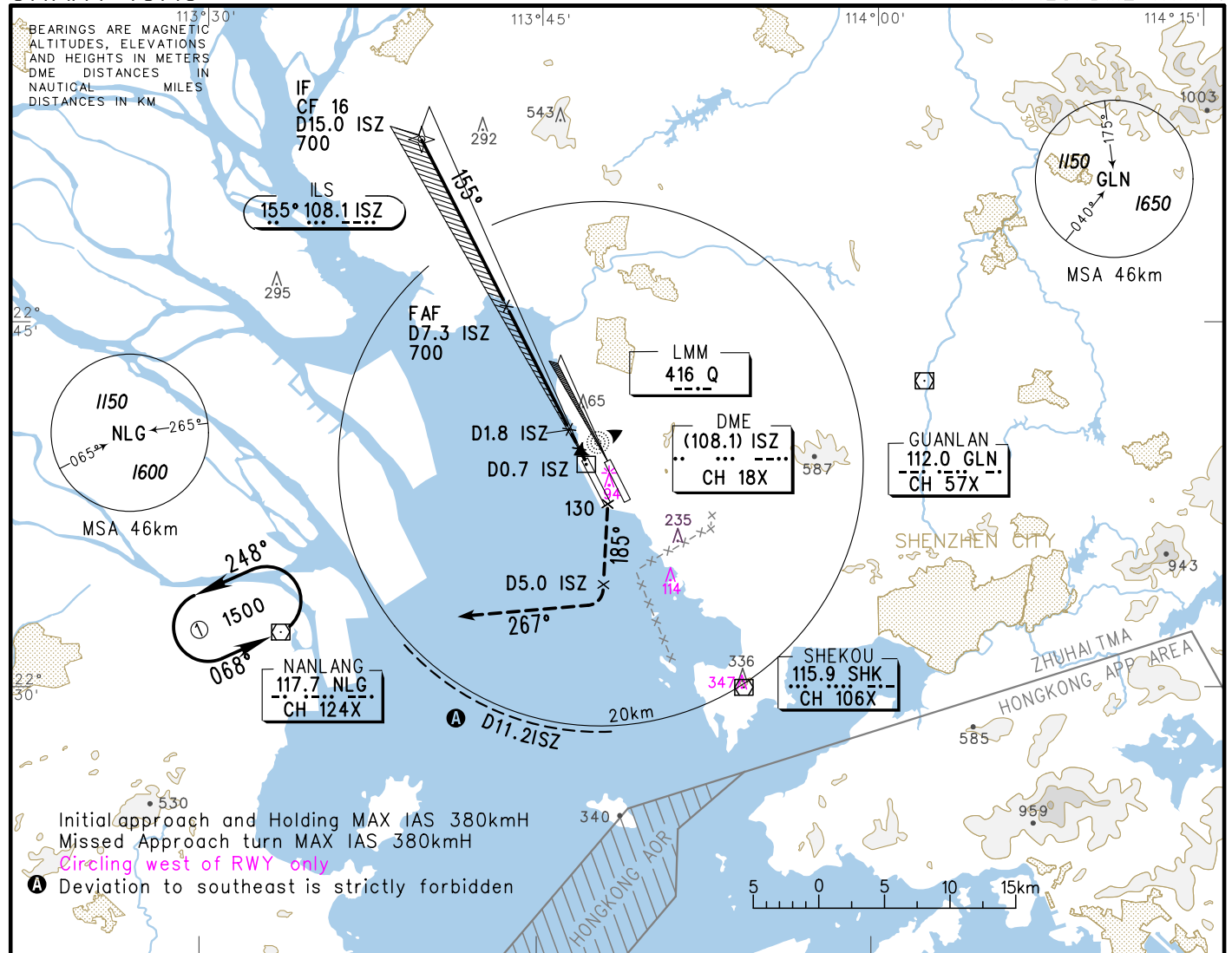
D-ATIS 131.45
 ATIS 127.45(departure) 126.85(arrival)
 Zhuhai APP(R) TM01 120.35(127.95)
 TM02 124.25(126.0)
 TM03 123.85(126.0)
 TM04 124.75(127.95)

INSTRUMENT APPROACH CHART-ICAO

AERODROME ELEV 4
 HEIGHTS RELATED TO VAR2° W THR RWY16 ELEV 4

TWR 130.35(118.05)(E)
 118.45(130.35)(W)

ZGSZ SHENZHEN/Baoan
 RNAV ILS/DME RWY16



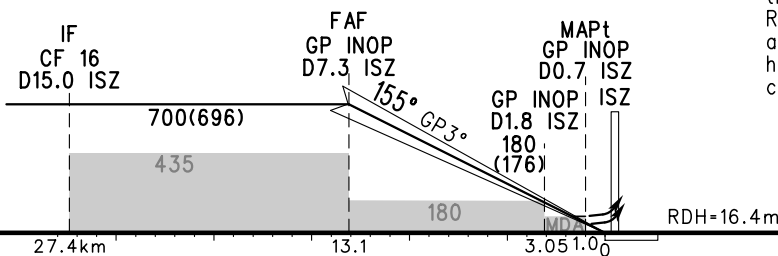
Initial approach and Holding MAX IAS 380kmH
 Missed Approach turn MAX IAS 380kmH
 Circling west of RWY only
 A Deviation to southeast is strictly forbidden

GP INOP	DME (ISZ) (NM)	8	7	6	5	4	3	2	1
	ALT (m)		684	587	490	392	295	198	101

TL 3600(QNH<980HPA)
 3300(QNH>980HPA)
 TA 2700

MISSED APPROACH

Climb straight ahead to 130, turn RIGHT on track 185° to D5.0 ISZ, then turn RIGHT and climb along R087°NLG, contact ATC immediately at 900, and to 1500 over NLG, join holding or approach again after ATC clearance.



	A	B	C	D	FAF-MAPt(GP INOP) 12.1km						
ILS/DME DA(H) RVR/VIS		64(60) 550/800		69(65) 550/800	GS in kt	80 150	100 185	120 220	140 260	160 295	180 335
GP INOP MDA(H) VIS		95(91) 900		95(91) 1200	Time min:sec	4:54	3:55	3:16	2:48	2:27	2:11
CIRCLING MDA(H) VIS	195(191) 2800		270(266) 3600	270(266) 4000	Rate of descent m/s	2.2	2.7	3.2	3.8	4.3	4.9

Changes: TWR FREQ, landing minima, new obstacles.