

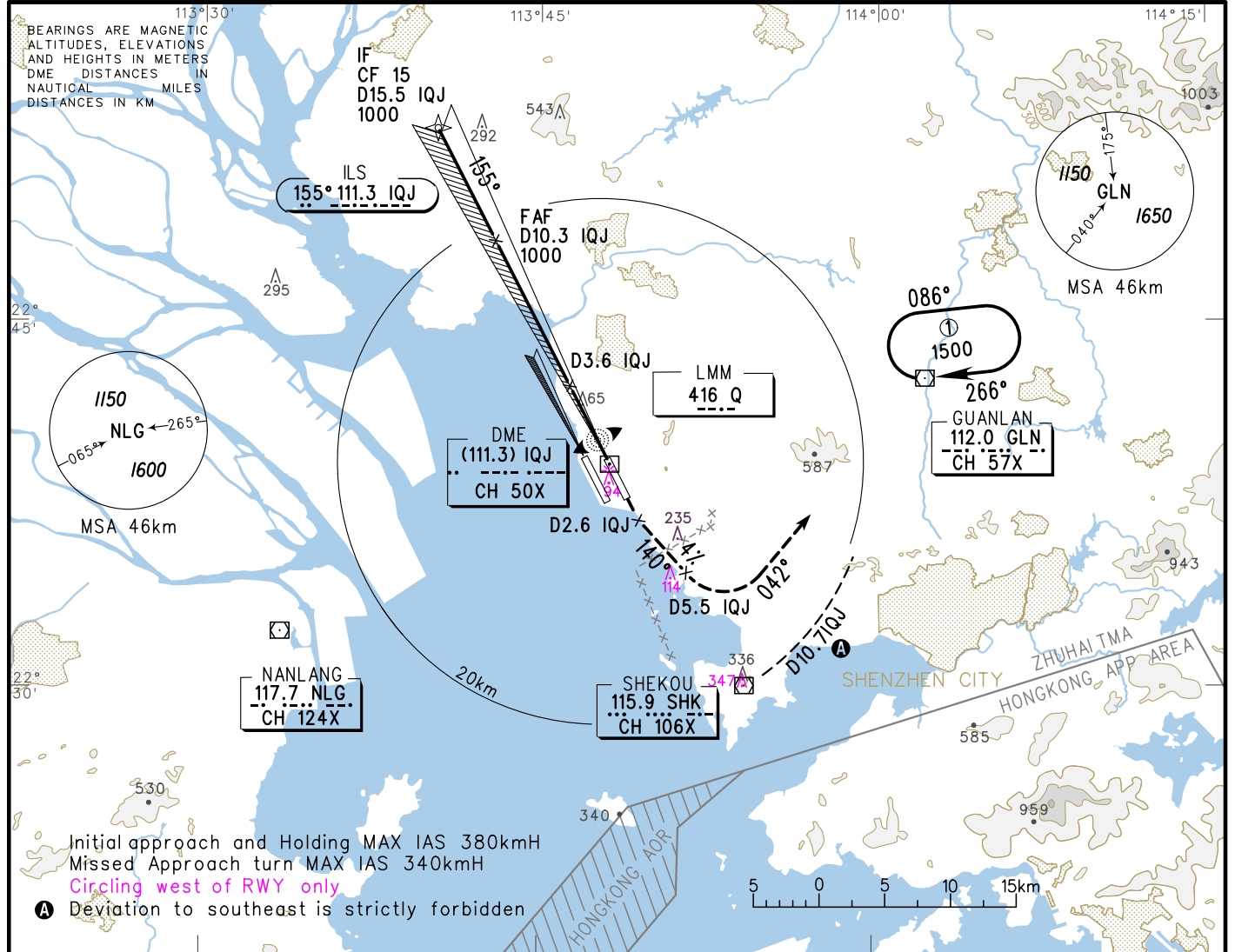
D-ATIS 131.45
 ATIS 127.45(departure) 126.85(arrival)
 Zhuhai APP(R) TM01 120.35(127.95)
 TM02 124.25(126.0)
 TM03 123.85(126.0)
 TM04 124.75(127.95)

INSTRUMENT APPROACH CHART-ICAO

AERODROME ELEV 4
 HEIGHTS RELATED TO VAR2° W THR RWY15 ELEV 4

TWR 130.35(118.05)(E)
 118.45(130.35)(W)

ZGSZ SHENZHEN/Baoan
 RNAV ILS/DME RWY15



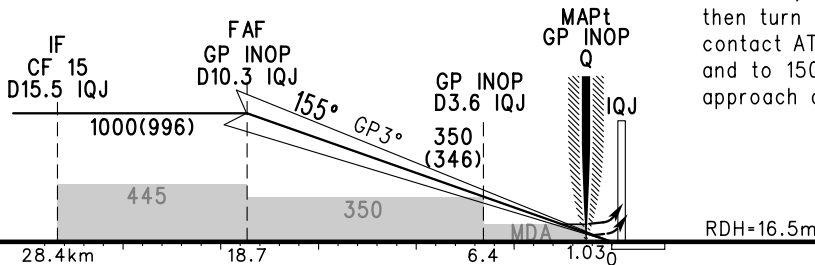
Initial approach and Holding MAX IAS 380kmH
 Missed Approach turn MAX IAS 340kmH
 Circling west of RWY only
 Ⓐ Deviation to southeast is strictly forbidden

GP INOP	DME (IQJ) (NM)	14	12	10	8	6	4	2	0
	ALT (m)			975	781	587	392	198	

TL 3600(QNH<980HPA)
 3300(QNH>980HPA)
 TA 2700

MISSED APPROACH

Climb straight ahead with gradient 4% to D2.6 IQJ, turn LEFT on track 140° to D5.5 IQJ, then turn LEFT and climb along R222° GLN, contact ATC immediately at 900, and to 1500 over GLN, join holding or approach again after ATC clearance.



		A	B	C	D	FAF-MAPt(GP INOP) 17.67km							
ILS/DME	DA(H) RVR/VIS	Ⓐ	64(60) 550/800		69(65) 550/800	GS in	kt	80	100	120	140	160	180
		Ⓑ	219(215) -/3300	224(220) -/3300	229(225) -/3400	Time	min:sec	7:09	5:43	4:46	4:05	3:35	3:11
GP INOP	MDA(H) VIS		140(136) 1700			Rate of descent	m/s	2.2	2.7	3.2	3.8	4.3	4.9
CIRCLING	MDA(H) VIS		195(191) 2800	270(266) 3600	270(266) 4000	Note: Ⓐ Missed approach climb gradient 4.0% Ⓑ Missed approach climb gradient 2.5% Changes: TWR FREQ, landing minima, new obstacles.							