

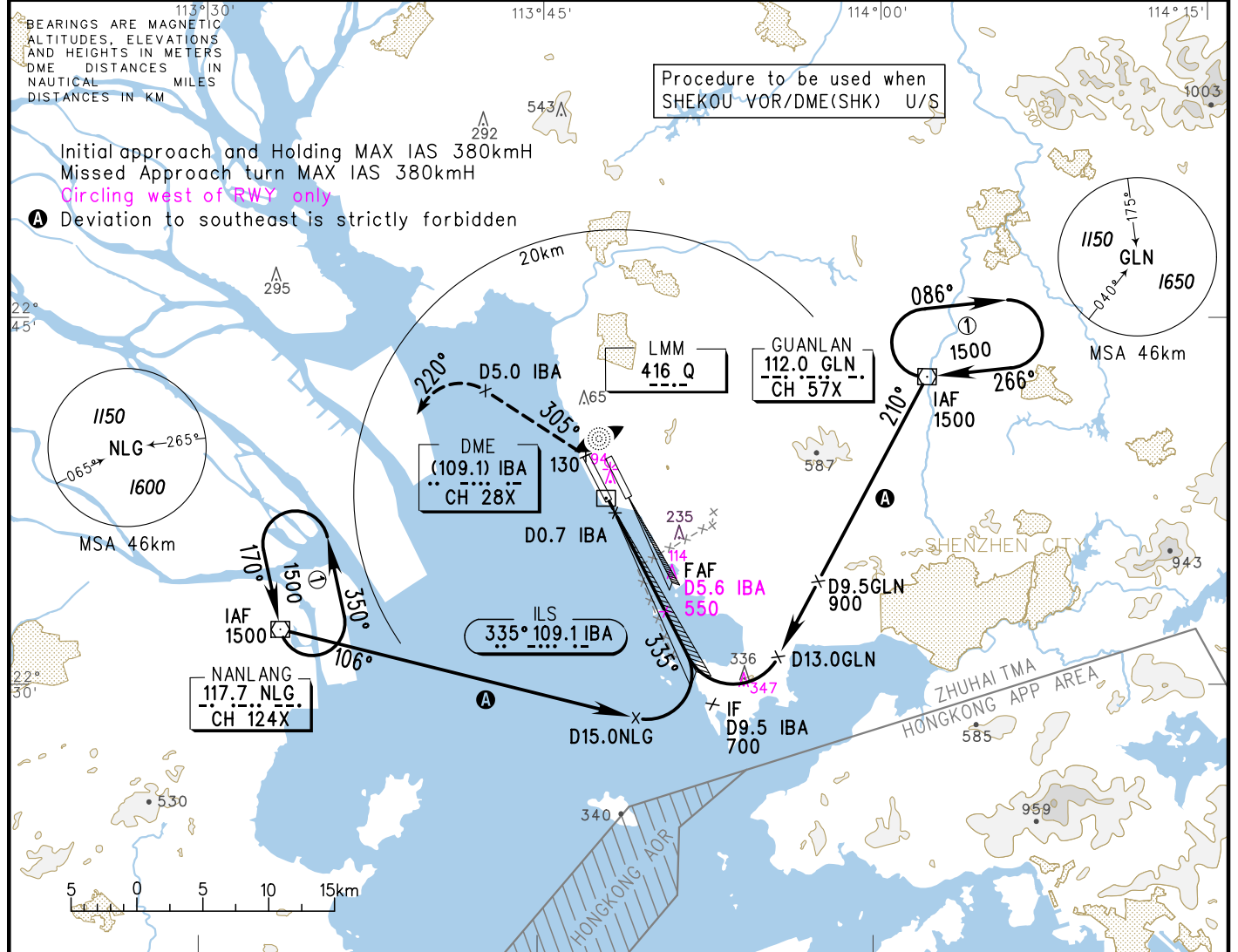
D-ATIS 131.45  
 ATIS 127.45(departure) 126.85(arrival)  
 Zhuhai APP(R) TM01 120.35(127.95)  
 TM02 124.25(126.0)  
 TM03 123.85(126.0)  
 TM04 124.75(127.95)

# INSTRUMENT APPROACH CHART-ICAO

AERODROME ELEV 4  
 HEIGHTS RELATED TO VAR2°W THR RWY34 ELEV 4

TWR 130.35(118.05)(E)  
 118.45(130.35)(W)

ZGSZ SHENZHEN/Baoan  
 SHK U/S ILS/DME RWY34



GP INOP	DME (IBA) (NM)	1	2	3	4	5	6	7	8
	ALT (m)			198	295	392	489		

**MISSED APPROACH**  
 Climb straight ahead to 130, turn LEFT on track 305° to D5.0 IBA, then turn LEFT and climb along R040° NLG, contact ATC immediately at 900, and to 1500 over NLG, join holding or approach again after ATC clearance.

TL 3600(QNH<980HPA)  
 3300(QNH>980HPA)  
 TA 2700

	A	B	C	D	FAF-MAPt(GP INOP) 9.1km						
					GS in kt	100	120	140	160	180	
ILS/DME DA(H) RVR/VIS		64(60) 550/800		69(65) 550/800	80 150	100 185	120 220	140 260	160 295	180 335	
GP INOP MDA(H) VIS		105(101) 1100		105(101) 1200	Time min:sec	3:41	2:57	2:27	2:06	1:51	1:38
CIRCLING MDA(H) VIS		195(191) 2800	270(266) 3600	270(266) 4000	Rate of descent m/s	2.2	2.7	3.2	3.8	4.3	4.9

Changes: TWR FREQ, landing minma, FAF, new obstacles.