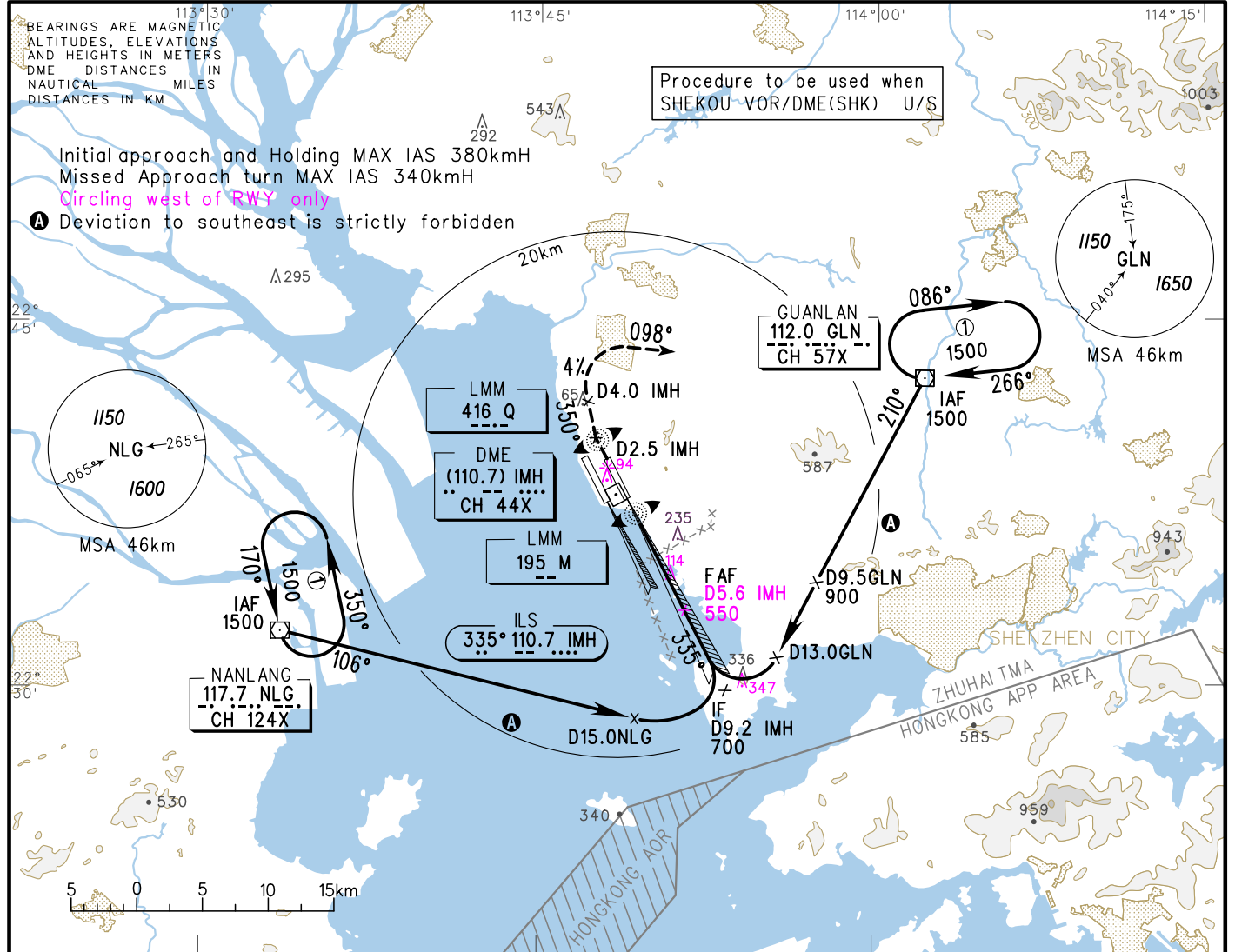


D-ATIS 131.45  
 ATIS 127.45(departure) 126.85(arrival)  
 Zhuhai APP(R) TM01 120.35(127.95)  
 TM02 124.25(126.0)  
 TM03 123.85(126.0)  
 TM04 124.75(127.95)

# INSTRUMENT APPROACH CHART-ICAO

AERODROME ELEV 4  
 HEIGHTS RELATED TO THR RWY33 ELEV 4  
 VAR 2° W  
 TWR 130.35(118.05)(E)  
 118.45(130.35)(W)

ZGSZ SHENZHEN/Baoan  
 SHK U/S ILS/DME RWY33



GP INOP	DME (IMH) (NM)	1	2	3	4	5	6	7	8
	ALT (m)			198	295	392	489		

**MISSED APPROACH**  
 Climb straight ahead with gradient 4% to D2.5 IMH, turn RIGHT on track 350° to D4.0 IMH, then turn RIGHT and climb along R278° GLN, contact ATC immediately at 900, and to 1500 over GLN, join holding or approach again after ATC clearance.

TL 3600(QNH<980HPA)  
 3300(QNH>980HPA)  
 TA 2700

					FAF-MAPT(GP INOP) 9.03km							
					GS in kt	80	100	120	140	160	180	
ILS/DME	DA(H) RVR/VIS	A	64(60) 550/800		69(65) 550/800		150	185	220	260	295	335
		B	144(140) -/1800	149(145) -/1900	154(150) -/2000	Time min:sec		3:39	2:56	2:26	2:05	1:50
GP INOP	MDA(H) VIS	190(186) 2700		Rate of descent m/s		2.2	2.7	3.2	3.8	4.3	4.9	
CIRCLING	MDA(H) VIS	195(191) 2800	270(266) 3600	270(266) 4000	Note: A Missed approach climb gradient 4.0% B Missed approach climb gradient 2.5% Changes: TWR, FREQ, landing minima, FAF, new obstacle.							