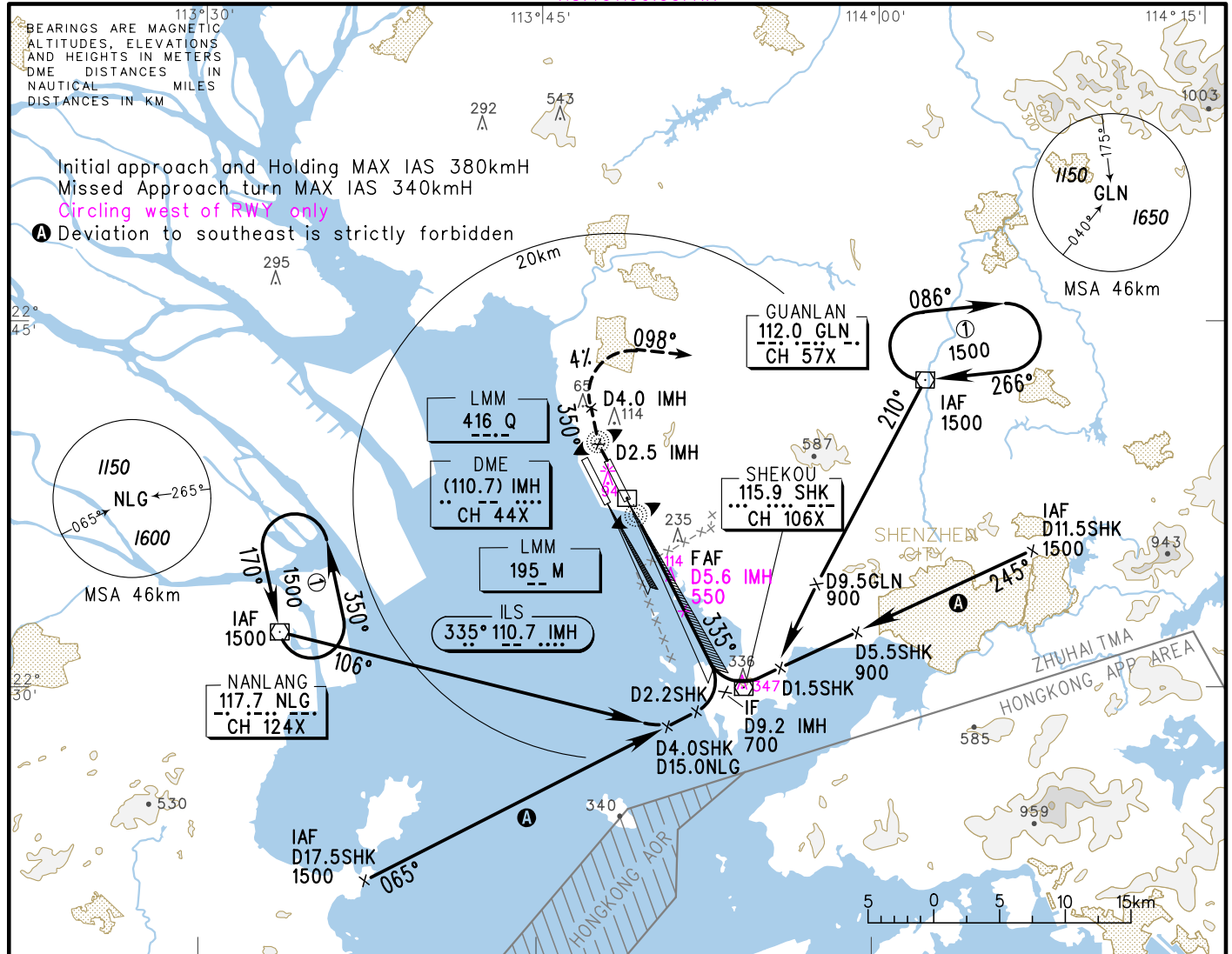


D-ATIS 131.45
 ATIS 127.45(departure) 126.85(arrival)
 Zhuhai APP(R) TM01 120.35(127.95)
 TM02 124.25(126.0)
 TM03 123.85(126.0)
 TM04 124.75(127.95)

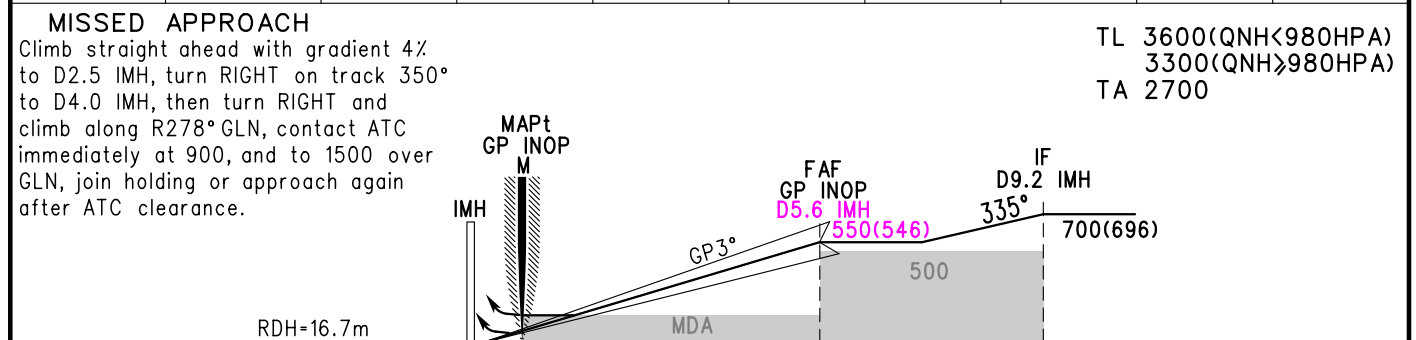
INSTRUMENT APPROACH CHART-ICAO

AERODROME ELEV 4
 HEIGHTS RELATED TO TWR 130.35(118.05)(E)
 VAR2° W THR RWY33 ELEV 4 118.45(130.35)(W)

ZGSZ SHENZHEN/Baoan
 ILS/DME RWY33



GP INOP	DME (IMH) (NM)	1	2	3	4	5	6	7	8
	ALT (m)		198	295	392	489			



		A	B	C	D	FAF-MAPt(GP INOP) 9.03km						
ILS/DME	DA(H) RVR/VIS	64(60) 550/800		69(65) 550/800		GS in	80	100	120	140	160	180
		144(140) -/1800	149(145) -/1900	154(150) -/2000		kt	150	185	220	260	295	335
GP INOP	MDA(H) VIS	190(186) 2700				Time	3:39	2:56	2:26	2:05	1:50	1:38
CIRCLING	MDA(H) VIS	195(191) 2800	270(266) 3600	270(266) 4000		Rate of descent	2.2	2.7	3.2	3.8	4.3	4.9

Note: A Missed approach climb gradient 4.0%
 B Missed approach climb gradient 2.5%
 Changes: TWR, FREQ, landing minima, FAF, new obstacles.