

ATIS 127.6
 APP 119.65(120.6) /AP01
 125.65(125.05)/AP02
 124.6(125.05) /AP03
 VAR3°W TWR 118.55(128.0)

STANDARD ARRIVAL
 CHART-INSTRUMENT

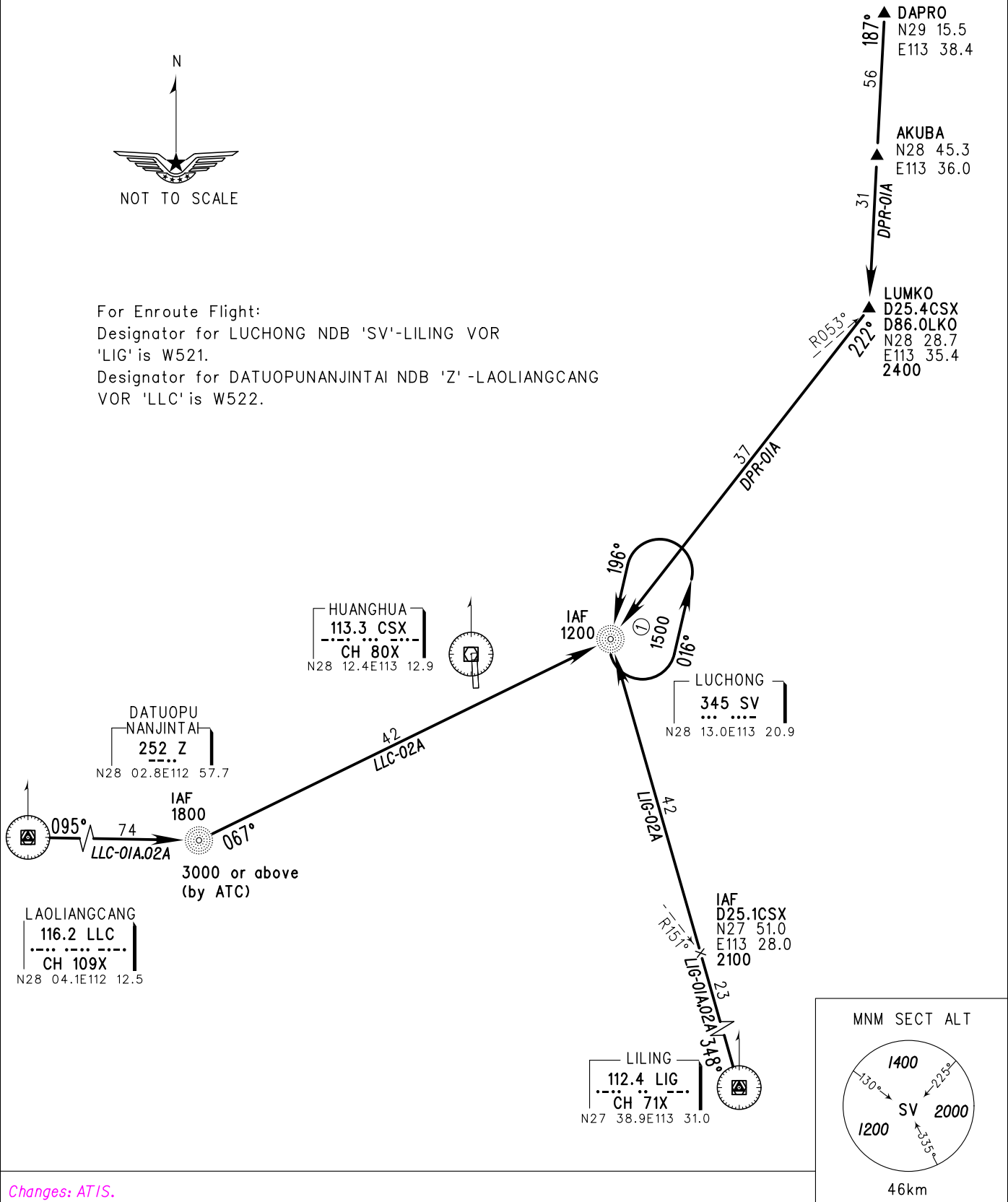
ZGHA CHANGSHA/Huanghua
 RWY36

BEARINGS ARE MAGNETIC
 ALTITUDES, ELEVATIONS
 AND HEIGHTS IN METERS
 DME DISTANCES IN
 NAUTICAL MILES
 DISTANCES IN KM

TL 3600
 TA 3000
 3300(QNH>1031HPA)
 2700(QNH<979HPA)



For Enroute Flight:
 Designator for LUCHONG NDB 'SV'-LILING VOR
 'LIG' is W521.
 Designator for DATUOPUNANJINTAI NDB 'Z' -LAOLIANGCANG
 VOR 'LLC' is W522.



Changes: ATIS.