

ATIS 127.6  
 APP 119.65(120.6) /AP01  
 125.65(125.05)/AP02  
 124.6(125.05) /AP03  
 VAR3°W TWR 118.55(128.0)

STANDARD ARRIVAL  
 CHART-INSTRUMENT

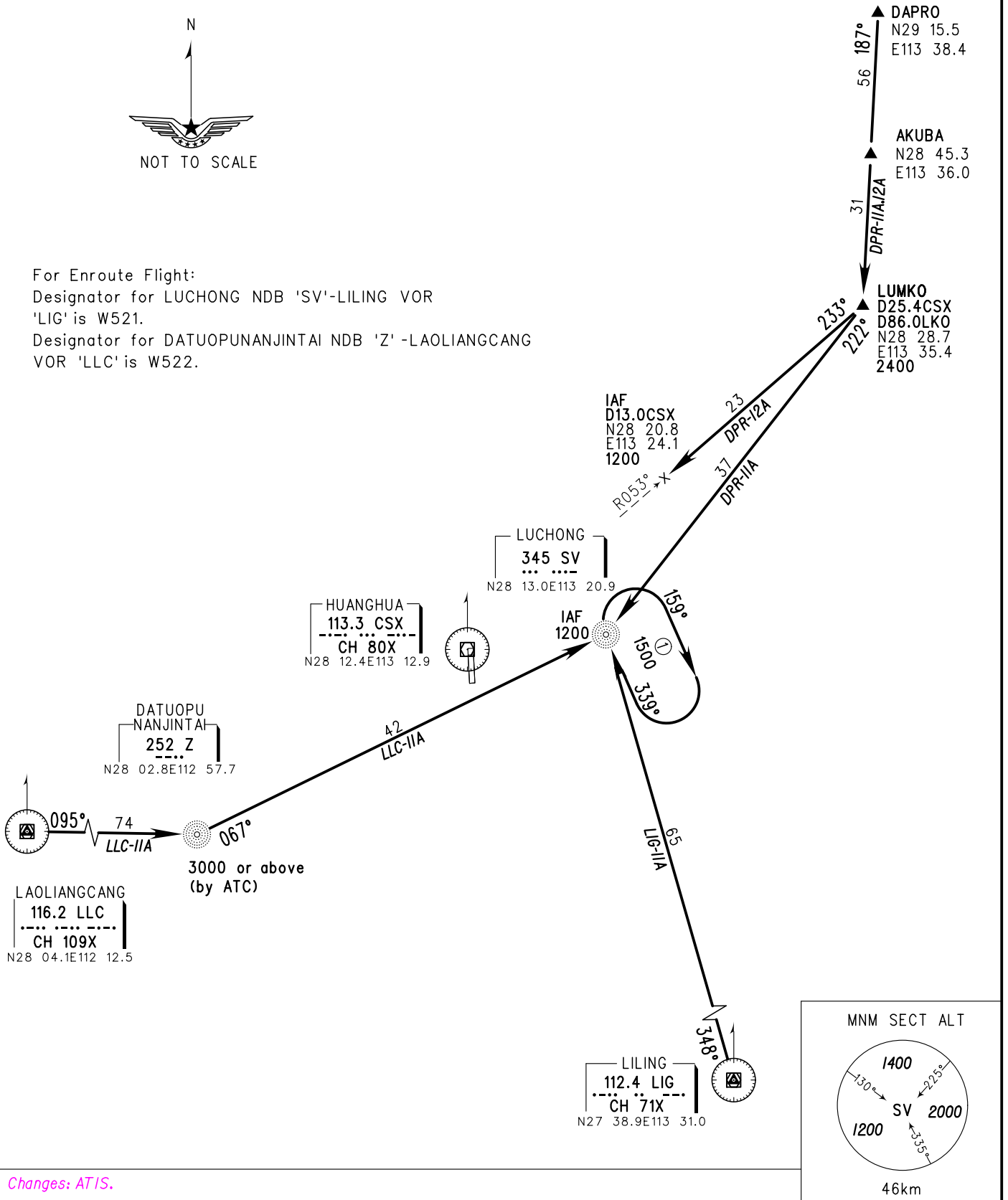
ZGHA CHANGSHA/Huanghua  
 RWY18

BEARINGS ARE MAGNETIC  
 ALTITUDES, ELEVATIONS  
 AND HEIGHTS IN METERS  
 DME DISTANCES IN  
 NAUTICAL MILES  
 DISTANCES IN KM

TL 3600  
 TA 3000  
 3300(QNH≥1031HPA)  
 2700(QNH<979HPA)



For Enroute Flight:  
 Designator for LUCHONG NDB 'SV'-LILING VOR  
 'LIG' is W521.  
 Designator for DATUOPUNANJINTAI NDB 'Z' -LAOLIANGCANG  
 VOR 'LLC' is W522.



Changes: ATIS.