

STANDARD ARRIVAL CHART-INSTRUMENT

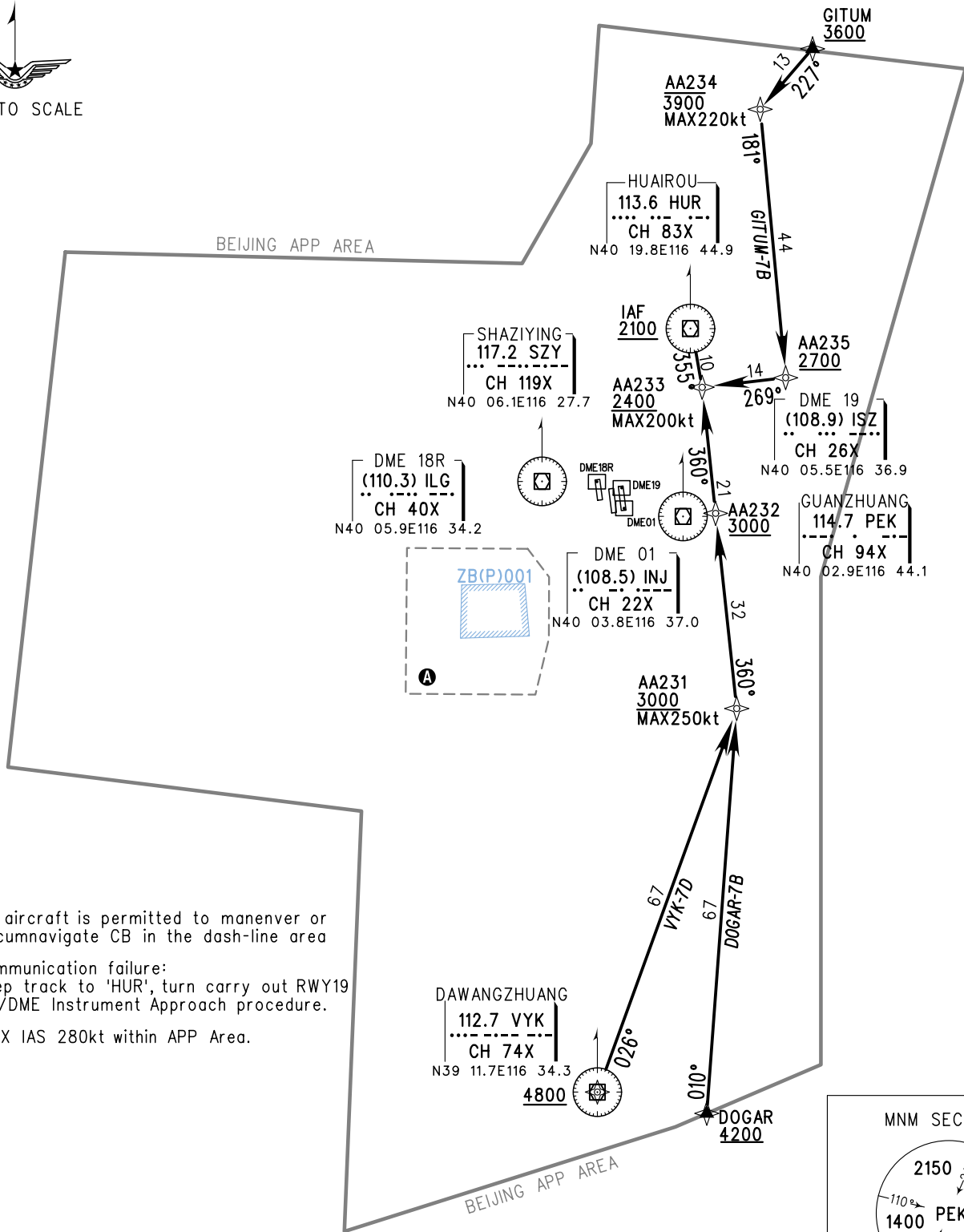
ZBAA BEIJING/Capital

RNAV

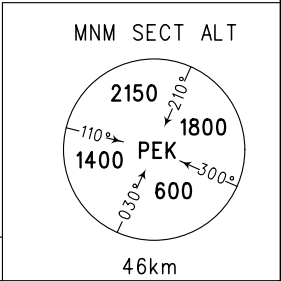
VAR6° W

RWY18R/18L/19(DOGAR/GITUM/VYK)

BEARINGS ARE MAGNETIC ALTITUDES,ELEVATIONS AND HEIGHTS IN METERS DME DISTANCES IN NAUTICAL MILES DISTANCES IN KM	ATIS(ARR) 127.6	APP04 119.7(129.0) (HO)	TL 3600
	APP01 119.0(125.05) (HO)	APP05 127.75(126.50)(HO)	TA 3000
	APP02 126.10(129.0) (HO)	APP06 121.10(126.50)(HO)	3300(QNH≥1031HPA)
1. RADAR REQUIRED 2. RNAV 1	APP03 120.6(125.05) (H24)	APP07 124.40(124.70)	2700(QNH≤979HPA)
3. GNSS,DME/DME/IRU REQUIRED		APP08 125.50(124.70)	



- A** No aircraft is permitted to manevrer or circumnavigate CB in the dash-line area
- B** Communication failure:
Keep track to 'HUR', turn carry out RWY19 ILS/DME Instrument Approach procedure.
- C** MAX IAS 280kt within APP Area.



Changes: APP07, 08.