

STANDARD ARRIVAL  
CHART-INSTRUMENT

VAR6° W

RWY18R/18L/19(DOGAR/GITUM/VYK)

BEARINGS ARE MAGNETIC ALTITUDES,ELEVATIONS AND HEIGHTS IN METERS DME DISTANCES IN NAUTICAL MILES DISTANCES IN KM

ATIS(ARR) 127.6

APP04 119.7(129.0) (H0)  
APP05 127.75(126.50)(H0)  
APP06 121.10(126.50)(H0)  
APP07 124.40(124.70)  
APP08 125.50(124.70)

TL 3600  
TA 3000  
3300(QNH ≥1031HPA)  
2700(QNH <979HPA)

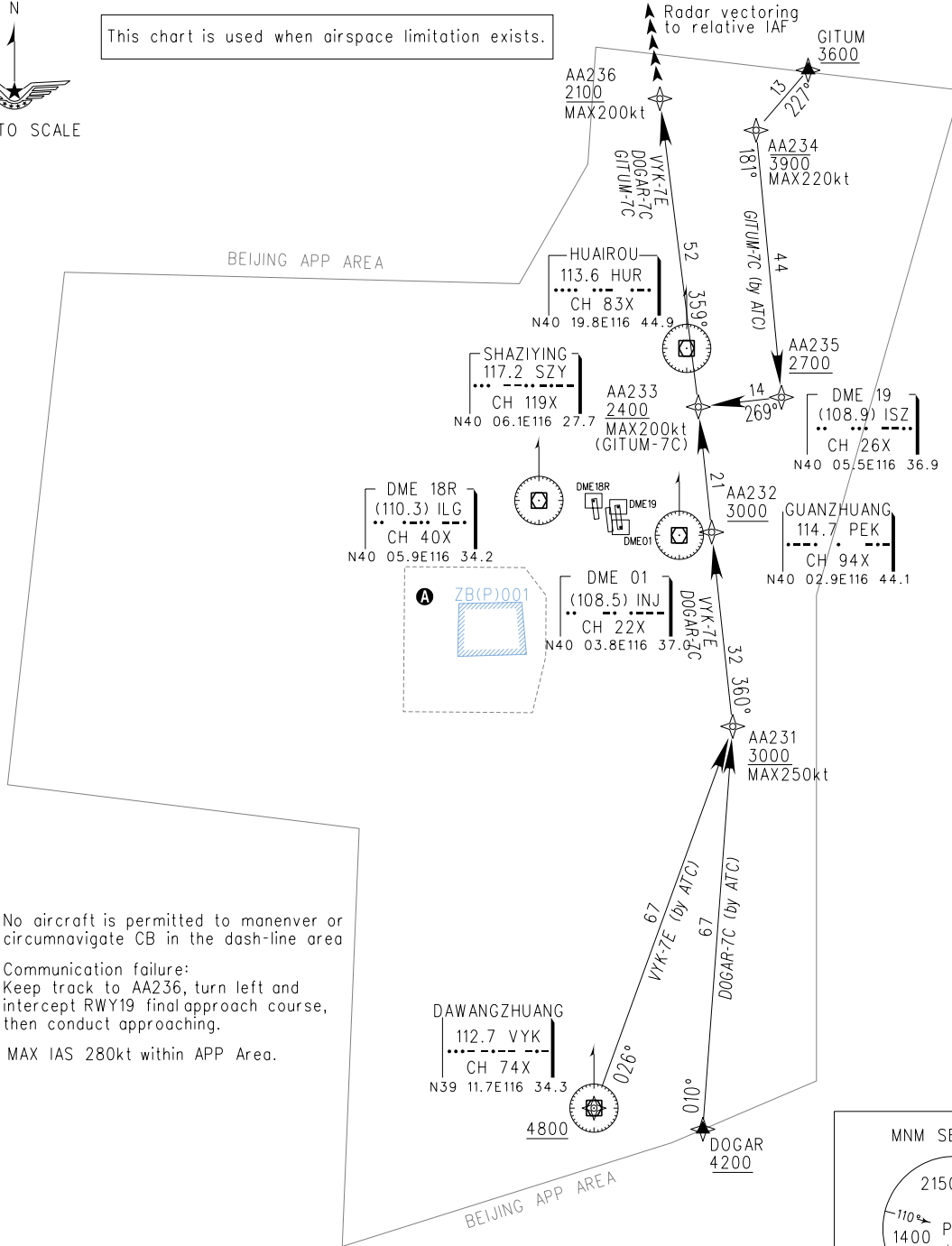
1. RADAR REQUIRED 2. RNAV 1  
3. GNSS,DME/DME/IRU REQUIRED

APP01 119.0(125.05) (H0)  
APP02 126.10(129.0) (H0)  
APP03 120.6(125.05) (H24)

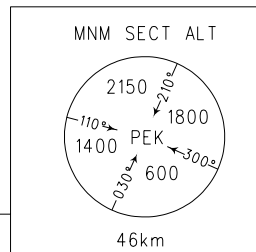


This chart is used when airspace limitation exists.

NOT TO SCALE



- A** No aircraft is permitted to maneuver or circumnavigate CB in the dash-line area
- B** Communication failure: Keep track to AA236, turn left and intercept RWY19 final approach course, then conduct approaching.
- C** MAX IAS 280kt within APP Area.



Changes: APP07&08.