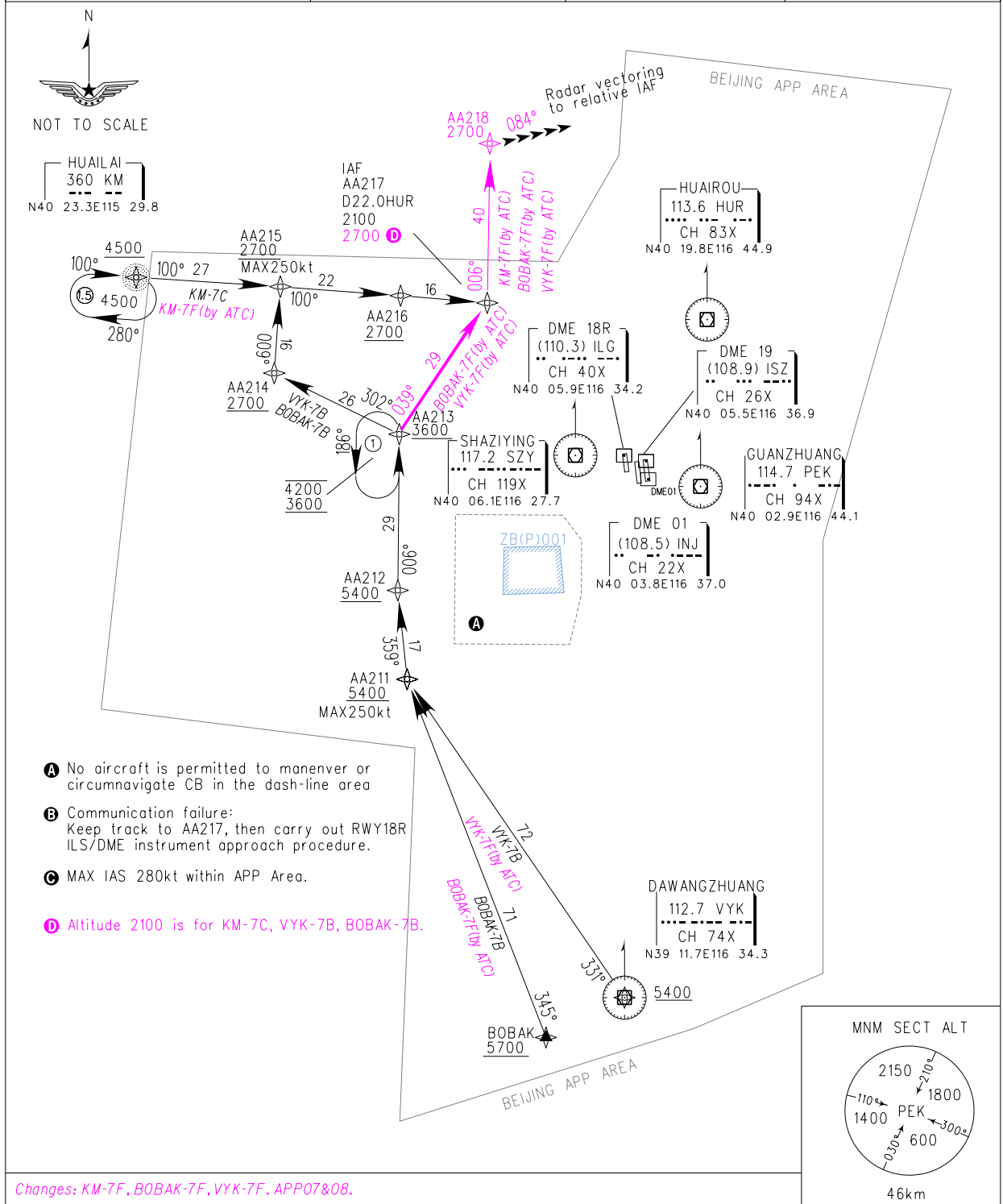


STANDARD ARRIVAL
CHART-INSTRUMENT

VAR6° W

RNAV
RWY18R/18L/19(BOBAK/KM/VYK)

BEARINGS ARE MAGNETIC. ALTITUDES, ELEVATIONS AND HEIGHTS IN METERS. DME DISTANCES IN NAUTICAL MILES. DISTANCES IN KM	ATIS(ARR) 127.6	APP04 119.7(129.0) (HO)	TL 3600
	APP01 119.0(125.05) (HO)	APP05 127.75(126.50)(HO)	TA 3000
1. RADAR REQUIRED 2. RNAV 1	APP02 126.10(129.0) (HO)	APP06 121.10(126.50)(HO)	3300(QNH ≥1031HPA)
3. GNSS, DME/DME/IRU REQUIRED	APP03 120.6(125.05) (H24)	APP07 124.40(124.70)	2700(QNH ≤979HPA)
		APP08 125.50(124.70)	



- A** No aircraft is permitted to maneuver or circumnavigate CB in the dash-line area
- B** Communication failure:
Keep track to AA217, then carry out RWY18R ILS/DME instrument approach procedure.
- C** MAX IAS 280kt within APP Area.
- D** Altitude 2100 is for KM-7C, VYK-7B, BOBAK-7B.

Changes: KM-7F, BOBAK-7F, VYK-7F. APP07&08.