

STANDARD DEPARTURE CHART-INSTRUMENT

ZBAA BEIJING/Capital

VAR6° W

RNAV
RWY18R/18L/19(YV)

BEARINGS ARE MAGNETIC ALTITUDES, ELEVATIONS AND HEIGHTS IN METERS DME DISTANCES IN NAUTICAL MILES DISTANCES IN KM

ATIS(DEP) 128.65

APP01 119.0(125.05) (HO)
APP02 126.10(129.0) (HO)
APP03 120.6(125.05) (H24)
APP04 119.7(129.0) (HO)
APP05 127.75(126.5) (HO)
APP06 121.10(126.5) (HO)
APP07 124.40(124.70)
APP08 125.50(124.70)

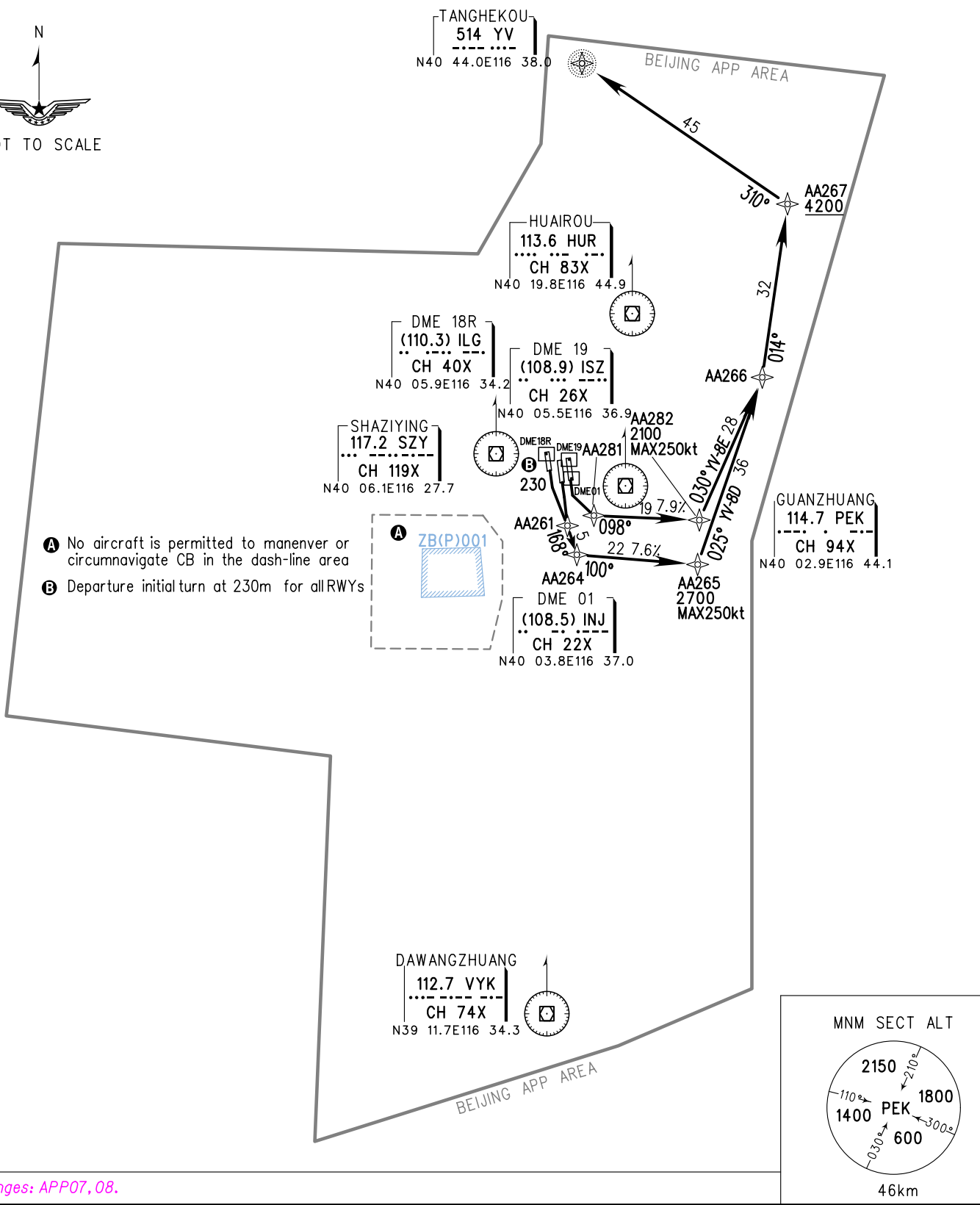
TL 3600
TA 3000
3300(QNH>1031HPA)
2700(QNH<979HPA)

1. RADAR REQUIRED
2. RNAV 1
3. GNSS, DME/DME/IRU REQUIRED

TWR01 124.3(118.3) 18R/36L
TWR02 118.5(118.3) 18L/36R
TWR03 118.05(118.6) 01/19



NOT TO SCALE



- A** No aircraft is permitted to maneuver or circumnavigate CB in the dash-line area
- B** Departure initial turn at 230m for all RWYs

Changes: APP07, 08.