

STANDARD DEPARTURE CHART-INSTRUMENT

ZBAA BEIJING/Capital

VAR6° W

RNAV RW18L/18R/19(REN0B)

BEARINGS ARE MAGNETIC ALTITUDES,ELEVATIONS AND HEIGHTS IN METERS DME DISTANCES IN NAUTICAL MILES DISTANCES IN KM

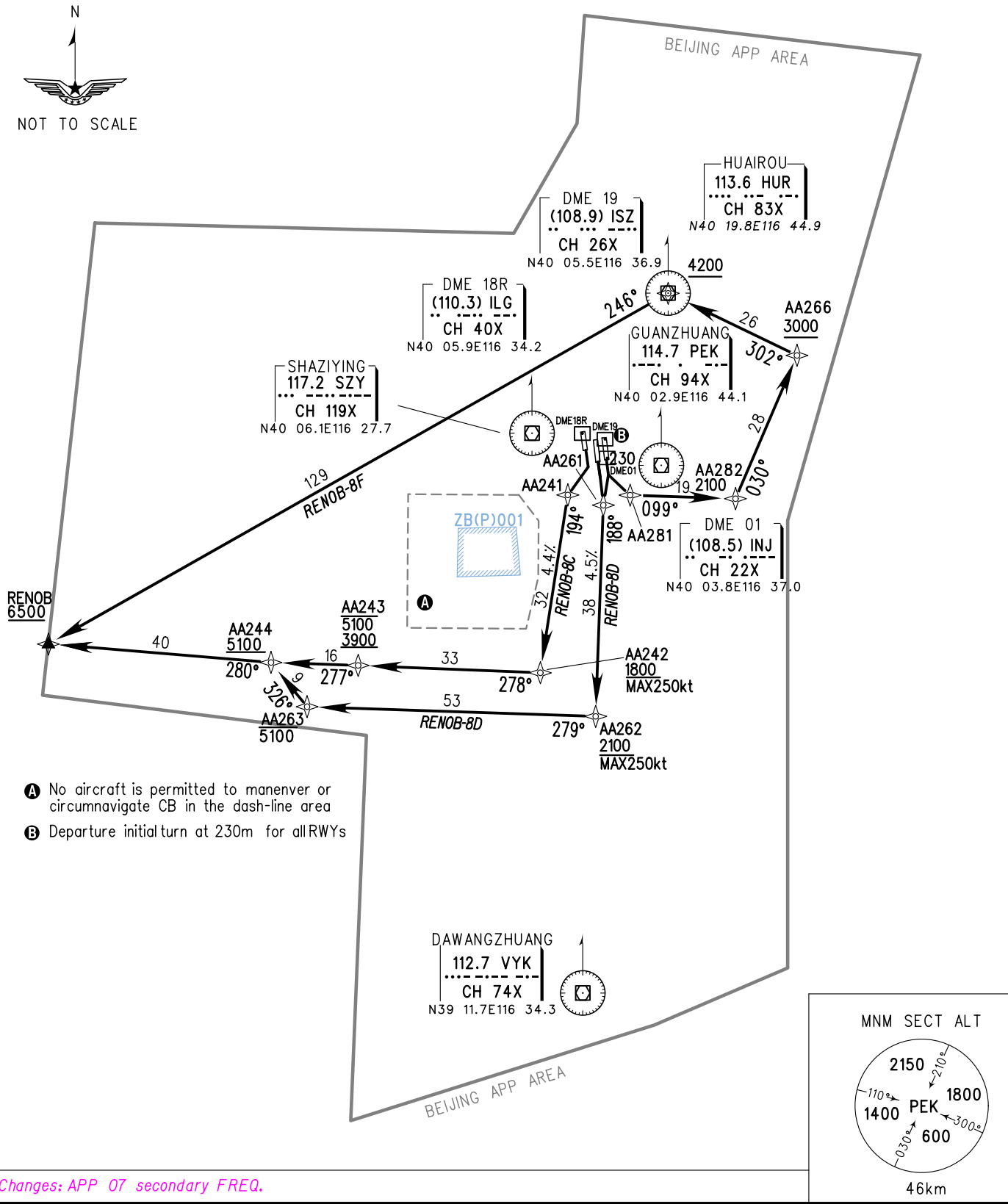
ATIS(DEP) 128.65

TWR01 124.3(118.3) 18R/36L
TWR02 118.5(118.3) 18L/36R
TWR03 118.05(118.6) 01/19

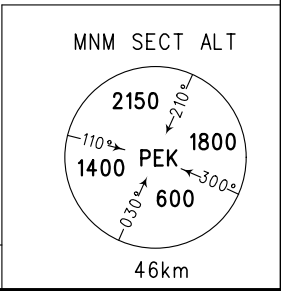
APP01 119.0(125.05) (HO)
APP02 126.10(129.0) (HO)
APP03 120.6(125.05) (H24)
APP04 119.7(129.0) (HO)
APP05 127.75(126.5) (HO)
APP06 121.10(126.5) (HO)
APP07 124.40 (124.70)
APP08 125.50(124.70)

TL 3600
TA 3000
3300(QNH>1031HPA)
2700(QNH<979HPA)

1. RADAR REQUIRED
2. RNAV 1
3. GNSS,DME/DME/IRU REQUIRED



- A** No aircraft is permitted to manouver or circumnavigate CB in the dash-line area
- B** Departure initial turn at 230m for allRWYs



Changes: APP 07 secondary FREQ.