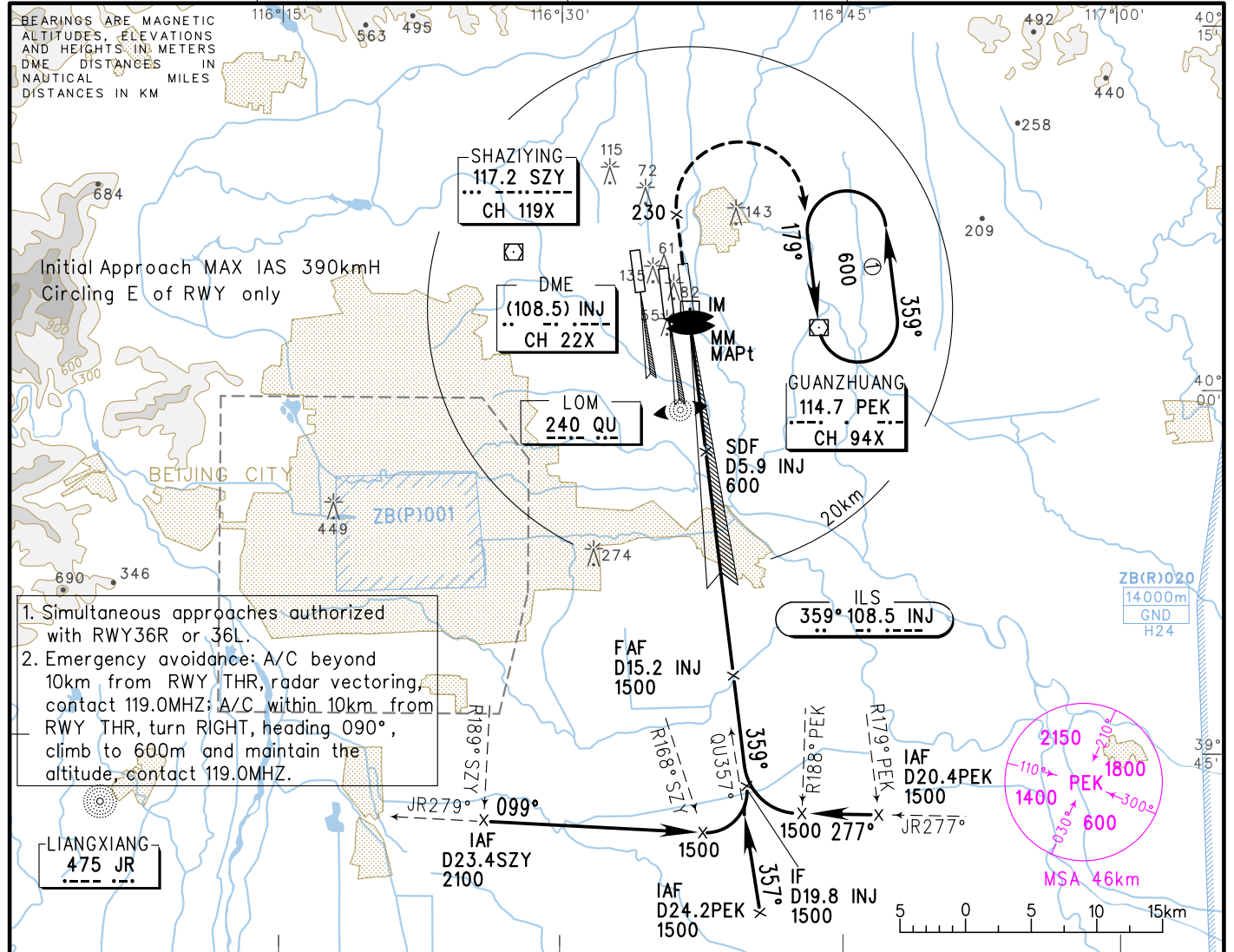


INSTRUMENT APPROACH CHART-ICAO

ATIS 127.6	119.0(125.05) AP01 (HO)
124.3(118.3) TWR01 (18R/36L)	126.1(129.0) AP02 (HO)
118.5(118.3) TWR02 (18L/36R)	120.6(125.05) AP03 (H24)
118.05(118.6) TWR03 (01/19)	119.7(129.0) AP04 (HO)
	125.50(124.70) AP08

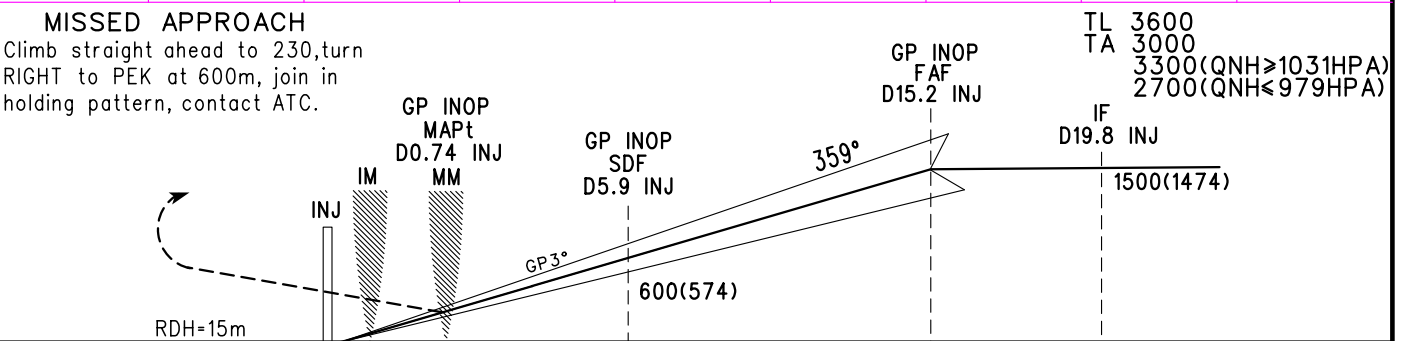
ZBAA BEIJING/Capital
ILS/DME RWY01



1. Simultaneous approaches authorized with RWY36R or 36L.
2. Emergency avoidance: A/C beyond 10km from RWY THR, radar vectoring, contact 119.0MHz; A/C within 10km from RWY THR, turn RIGHT, heading 090°, climb to 600m and maintain the altitude, contact 119.0MHz.

LIANGXIANG 475 JR

GP INOP	DME (INJ) (NM)	2	4	6	8	10	12	14
	ALT (m)	218	412	606	800	993	1187	1380



	A	B	C	D	FAF-MAPt(GP INOP) 26.75km							
ILS/DME DA(H) RVR/VIS	96(70) 550/800	101(75) 550/800	106(80) 700/900		GS in kt	80	100	120	140	160	180	
					kmH	150	185	220	260	295	335	
GP INOP MDA(H) VIS	166(140) 1200	166(140) 1600	166(140) 2000		Time min:sec	10:50	08:40	07:13	06:11	05:25	04:49	
					Rate of descent m/s	2.2	2.7	3.2	3.8	4.3	4.9	
CIRCLING MDA(H) VIS	210(175) 1600	265(230) 3200	265(230) 3600		Changes: LandIng minIma, MSA.							