

INSTRUMENT
APPROACH
CHART - ICAO

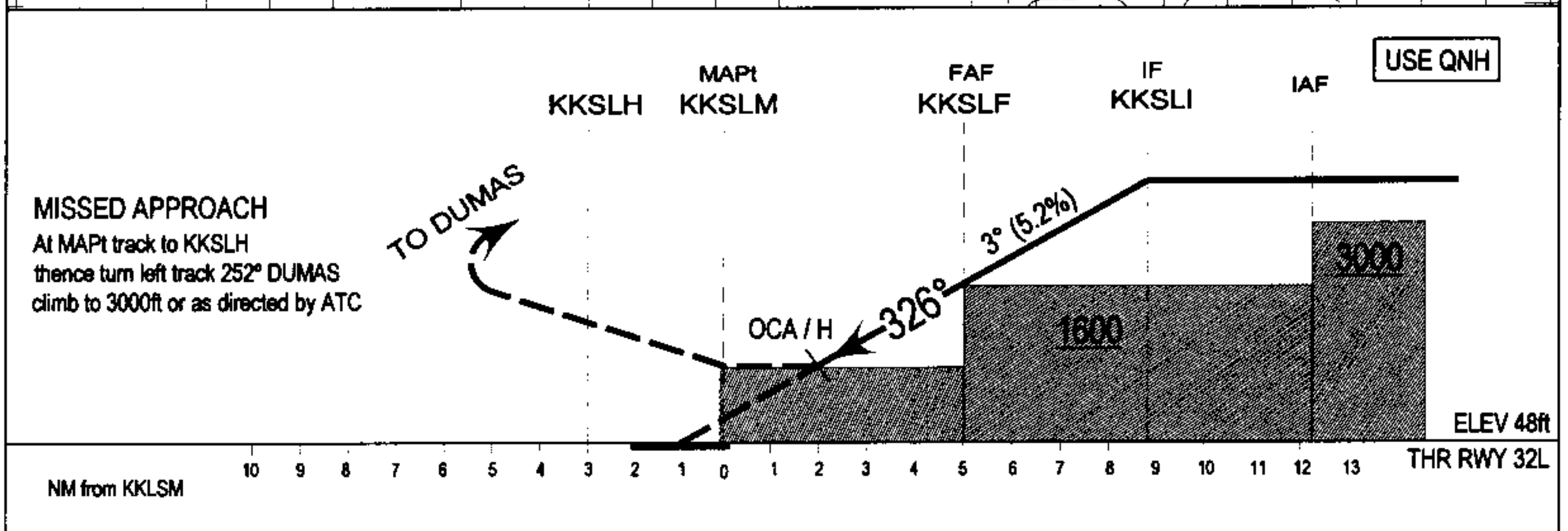
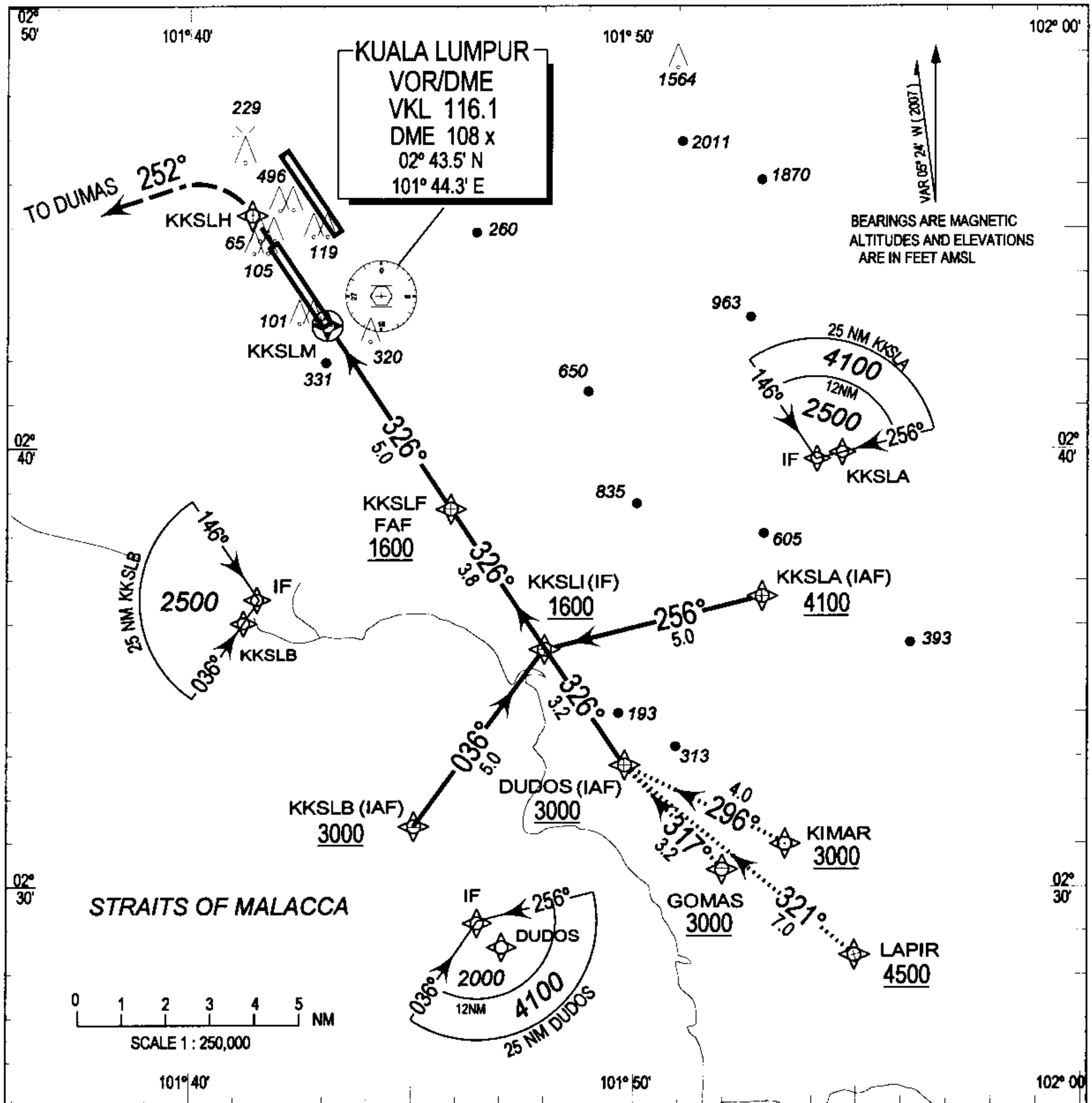
AD ELEV 70ft
HEIGHT RELATED TO
THR RWY 32L - ELEV 48ft

TRANSITION LEVEL
FL 130

SEPANG/KL INTERNATIONAL AIRPORT

RNAV (GNSS)

RWY 32L



		OCA / H								
Aircraft Category		A		B		C		D		
Straight - in - Approach		610 (562)								
NM to next WP	KKSLM	1.6	2	3	4	KKSLF (FAF)	1	2	3	4
Alt (3° Approach Path)		610	730	1050	1370	1700	2000	2310	2630	2950

WAYPOINT COORDINATES

WAYPOINTS	COORDINATES	RADIAL / DISTANCE FROM VKL VOR
KKSLA	02° 36' 38.2" N 101° 52' 52" E	R - 129 / 11.0 D
KKSLB	02° 31' 22.1" N 101° 45' 03.6" E	R - 176 / 12.1 D
DUDOS	02° 32' 42" N 101° 49' 51.6" E	R - 153 / 12.1 D
KKSLI	02° 35' 25.4" N 101° 48' 00" E	R - 155 / 8.8 D
KKSLF	02° 38' 39.8" N 101° 45' 49.6" E	R - 162 / 5.0 D
KKSLM (Mapt- Fly-over)	02°42' 46.4" N 101° 43' 05.5" E	R - 241 / 1.4 D
KKSLH (Turn point)	02° 45' 17.6" N 101° 41' 25.4" E	R - 303 / 3.4 D