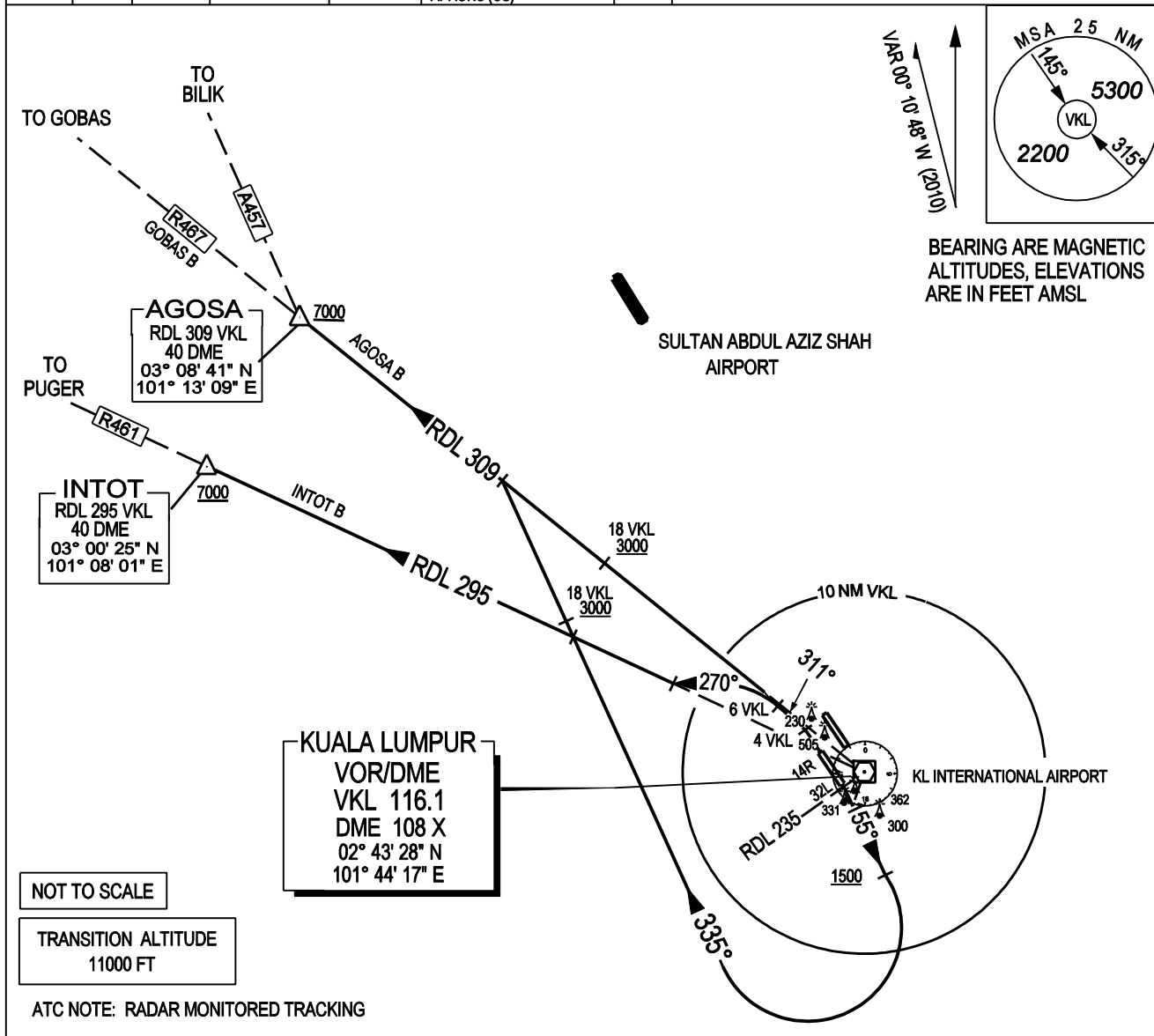


ATIS		126.45	APP N	124.2 MHz	LUMPUR GROUND	
14L/32R	TWR	118.8	(SECONDARY)	121.25 MHz	APRONS (MN, MS, ME & MW)	122.15
	GND	121.65			APRONS (SE & SS)	122.275
14R/32L	TWR	118.5	APP S	119.45 MHz	APRONS (SN & SW)	122.85
	GND	121.8	(SECONDARY)	125.1 MHz	APRONS (CN, CE, CW)	123.25
					APRONS (CS)	121.8

SEPANG / KL INTERNATIONAL AIRPORT
RWY 14R / 32L
DEPARTURES NORTH / WEST



NOT TO SCALE

TRANSITION ALTITUDE
11000 FT

ATC NOTE: RADAR MONITORED TRACKING

**INTOT BRAVO DEPARTURE
AGOSA BRAVO DEPARTURE**

RWY 14R - CONTACT APP S AFTER AIRBORNE
PDG 3.7% TO 2700 FT - CTA
TRACK 146°
ABEAM VKL VOR (RDL 235) TURN RIGHT
TRACK 155°
ABEAM VKL VOR 1500 FT, WHICHEVER IS LATER, TURN RIGHT
TRACK 335°

FOR INTOT B
INTERCEPT RDL 295 FROM VKL OUTBOUND TO INTOT

FOR AGOSA B
INTERCEPT RDL 309 FROM VKL VOR OUTBOUND TO AGOSA

RWY 32L - CONTACT APP N AFTER AIRBORNE
TRACK 326°
AT 4 DME VKL TURN LEFT
TRACK 311°

FOR INTOT B
AT 6 DME VKL TURN LEFT
TRACK 270°
INTERCEPT RDL 295 FROM VKL VOR OUTBOUND TO INTOT

FOR AGOSA B
AT 6 DME VKL
INTERCEPT RDL 309 FROM VKL VOR OUTBOUND TO AGOSA

CAUTION: - CLIMB TO INITIAL ALTITUDE 6000 FT. - CONTACT "LUMPUR APPROACH" NOT LATER THAN 2000 FT AFTER AIRBORNE REPORT : - ASSIGNED SID - ALTITUDE PASSING TO THE NEAREST 100 FT - INTIAL ALTITUDE CLIMING TO.

VERTICAL RESTRICTIONS :
ADHERE TO VERTICAL RESTRICTIONS eg. 3000 FT = NOT BELOW 3000 FT ON CLIMB UNLESS SPECIFICALLY CANCELLED BY ATC.