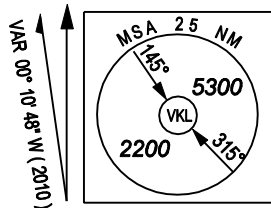


STANDARD DEPARTURE CHART INSTRUMENT  
(SID) - ICAO

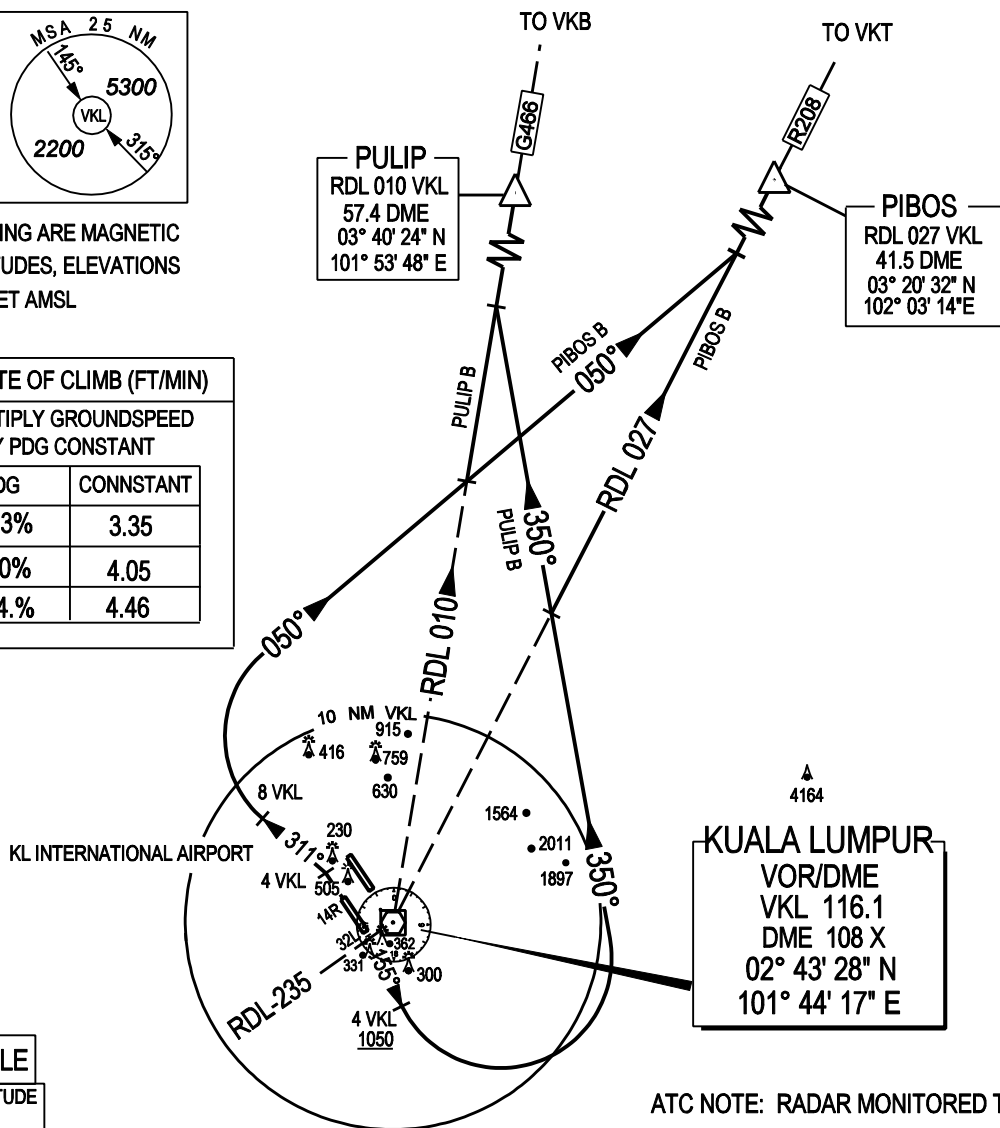
WMKK AD 2 - 57

ATIS		126.45	APP N	124.2 MHZ	LUMPUR GROUND		SEPANG / KL INTERNATIONAL AIRPORT RWY 14R / 32L DEPARTURES NORTH EAST
14L/32R	TWR	118.8	(SECONDARY)	121.25 MHZ	APRONS (MN, MS, ME & MW)	122.15	
	GND	121.65			APRONS (SE & SS)	122.275	
14R/32L	TWR	118.5	APP S	119.45 MHZ	APRONS (SN & SW)	122.85	
	GND	121.8	(SECONDARY)	125.1 MHZ	APRONS (CN,CE,CW)	123.25	
					APRONS (CS)	121.8	



BEARING ARE MAGNETIC  
ALTITUDES, ELEVATIONS  
IN FEET AMSL

RATE OF CLIMB (FT/MIN)	
MULTIPLY GROUND SPEED BY PDG CONSTANT	
PDG	CONSTANT
3.3%	3.35
4.0%	4.05
4.4%	4.46



NOT TO SCALE  
TRANSITION ALTITUDE  
11 000 FT

ATC NOTE: RADAR MONITORED TRACKING

PULIP BRAVO DEPARTURE  
PIBOS BRAVO DEPARTURE

RWY 14R - CONTACT APP S AFTER AIRBORNE  
PDG : FOR PULIP : 4.4% TO 5500 FT - OBSTACLE /TRAFFIC /CTA  
FOR PIBOS : 4.4% TO 4300 FT - OBSTACLE /TRAFFIC /CTA

RWY 32L - CONTACT APP N AFTER AIRBORNE  
PDG : FOR PULIP : 4.0% TO 10700 FT - CTA  
FOR PIBOS : 4.0% TO 8800 FT - CTA

TRACK 146°  
ABEAM VKL VOR (RDL 235) TURN RIGHT  
TRACK 155°  
AT 4 DME VKL, NOT BELOW 1050 FT, TURN LEFT  
TRACK 350°

TRACK 326°  
AT 4 DME VKL TURN LEFT  
TRACK 311°  
AT 8 DME VKL TURN RIGHT  
TRACK 050°

FOR PULIP B  
INTERCEPT RDL 010 OUTBOUND FROM VKL VOR TO PULIP  
FOR PIBOS B  
INTERCEPT RDL 027 OUTBOUND FROM VKL VOR TO PIBOS

FOR PULIP B  
INTERCEPT RDL 010 OUTBOUND FROM VKL VOR TO PULIP  
FOR PIBOS B  
INTERCEPT RDL 027 OUTBOUND FROM VKL VOR TO PIBOS

CAUTION : - CLIMB TO INITIAL ALTITUDE 6000 FT - CONTACT " LUMPUR APPROACH " NOT LATER THAN 2000 FT AFTER AIRBORNE.  
REPORT : - ASSIGNED SID - ALTITUDE PASSING TO THE NEAREST 100 FT - INITIAL ALTITUDE CLIMBING TO.

VERTICAL RESTRICTIONS:  
ADHERE TO VERTICAL RESTRICTIONS eg. 1500 FT = NOT BELOW 1500 FT ON CLIMB UNLESS SPECIFICALLY CANCELLED BY ATC.