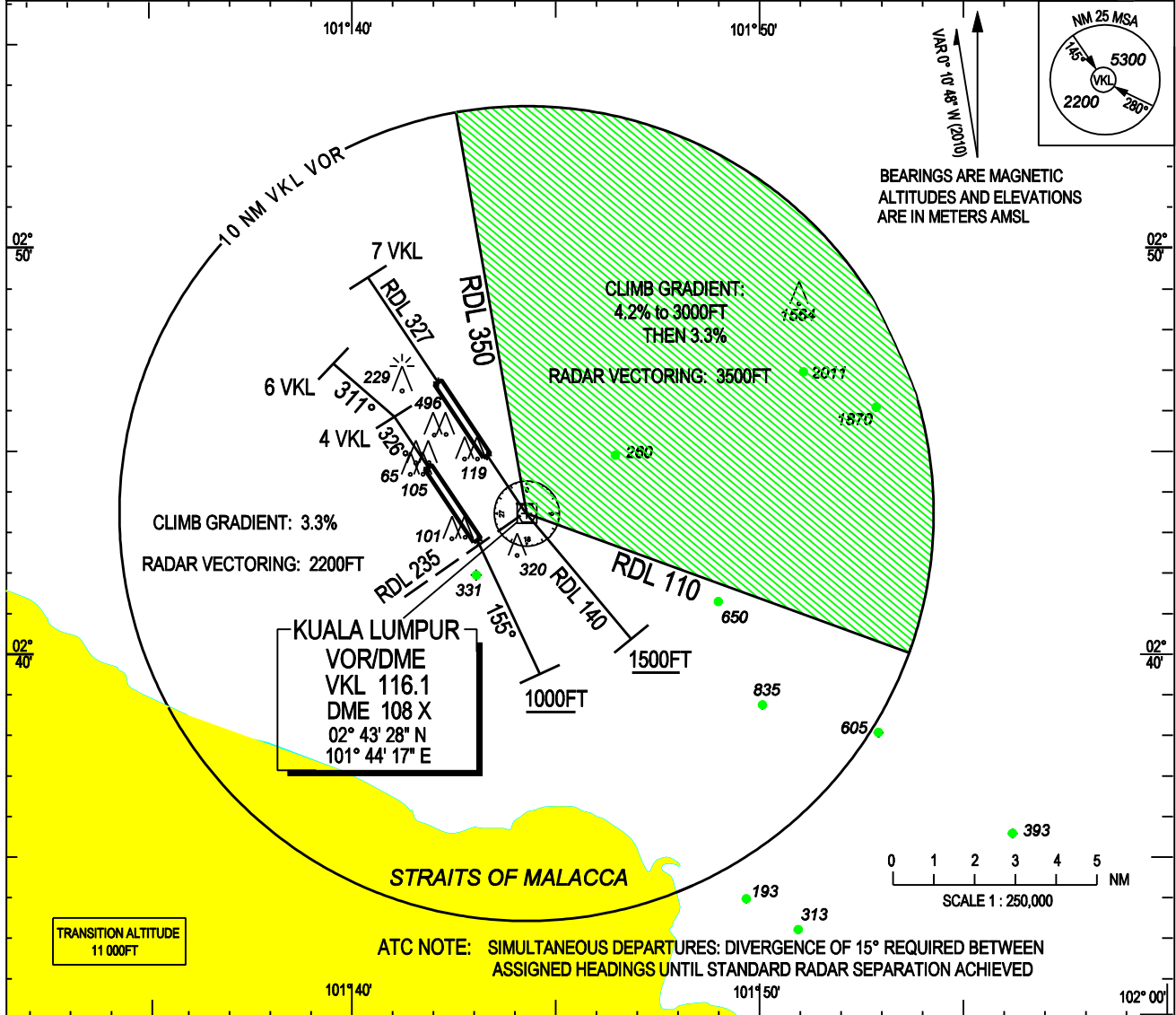


STANDARD DEPARTURE CHART INSTRUMENT
(SID) - ICAO

WMKK AD 2 - 51

ATIS		126.45	APP N	124.2 MHz	LUMPUR GROUND	
14L/32R	TWR	118.8	(SECONDARY)	121.25 MHz	APRONS (MN, MS, ME & MW)	122.15
	GND	121.65			APRONS (SE & SS)	122.275
14R/32L	TWR	118.5	APP S	119.45 MHz	APRONS (SN & SW)	122.85
	GND	121.8	(SECONDARY)	125.1 MHz	APRONS (CN, CE, CW)	123.25
					APRONS (CS)	121.8

SEPANG/KL INTERNATIONAL AIRPORT
LUMPUR RADAR TWO DEPARTURE
(ALL RUNWAYS)



STANDARD RADAR DEPARTURES LUMPUR RADAR TWO DEPARTURE

RWY 32R

- TRACK RDL 327 FROM VKL VOR
- AT 7 DME VKL TURN TO ASSIGNED HEADING
- CLIMB TO INITIAL ALTITUDE 6000 FT;
- CONTACT "LUMPUR APPROACH N" NOT LATER THAN 2000FT AFTER AIRBORNE

RWY 32L

- TRACK 326°
- AT 4 DME VKL TURN LEFT, TRACK 311°
- AT 6 DME VKL TURN TO ASSIGNED HEADING
- CLIMB TO INITIAL ALTITUDE 6000 FT;
- CONTACT "LUMPUR APPROACH N" NOT LATER THAN 2000FT AFTER AIRBORNE

RWY 14R

- TRACK 146° UNTIL ABEAM VKL VOR (RDL 235), THENCE TRACK 155°
- AFTER PASSING ABEAM VKL VOR AND ON LEAVING 1000 FT
- TURN TO ASSIGNED HEADING
- CLIMB TO INITIAL ALTITUDE 6000 FT;
- CONTACT "LUMPUR APPROACH S" NOT LATER THAN 2000 FT AFTER AIRBORNE

RWY 14L

- TRACK 146° TO OVERHEAD VKL VOR, THENCE ON RDL 140
- AT 1500 FT OR VKL VOR, WHICHEVER IS LATER,
- TURN TO ASSIGNED HEADING
- CLIMB TO INITIAL ALTITUDE 6000 FT;
- CONTACT "LUMPUR APPROACH S" NOT LATER THAN 2000 FT AFTER AIRBORNE

COMMUNICATIONS FAILURE:

- IMMEDIATELY SQUAWK 7600
- MAINTAIN ASSIGNED HEADING - CLIMB TO MSA OR LAST ASSIGNED LEVEL IF HIGHER
- MAINTAIN MSA OR ASSIGNED LEVEL, AS APPLICABLE, FOR 2 MINUTES THEN CLIMB TO FLIGHT PLANNED LEVEL AND INTERCEPT FLIGHT PLANNED TRACK (AS AMENDED BY ATC, IF APPLICABLE)

RATE OF CLIMB IN FT/MIN

GROUND SPEED (KT)		120	130	140	150	160	170	180	190	200	220	240	260	280	300
GRADIENT	3.3%	401	434	468	502	535	569	602	635	669	736	803	869	936	1003
	4.2%	511	553	596	638	681	724	766	809	851	936	1021	1106	1191	1276

REPORT - DIRECTION OF TURN AND ASSIGNED HEADING
 - ALTITUDE PASSING TO THE NEAREST 100 FT
 - INITIAL ALTITUDE CLIMBING TO.

VERTICAL RESTRICTION:

ADHERE TO VERTICAL RESTRICTIONS eg. 1000 FT = NOT BELOW 1000 FT ON CLIMB UNLESS SPECIFICALLY CANCELLED BY ATC.

CAUTION :

ASSIGNED HEADING (AND LEVEL IF APPLICABLE) WILL BE ISSUED WITH TAKE-OFF CLEARANCE

CLIMB GRADIENT;

MINIMUM CLIMB GRADIENT 3.3% UNLESS OTHERWISE SPECIFIED USE 4.2% CLIMB GRADIENT FROM LIFT - OFF IF ASSIGNED HEADING WILL TAKE AIRCRAFT INTO HATCHED AREA