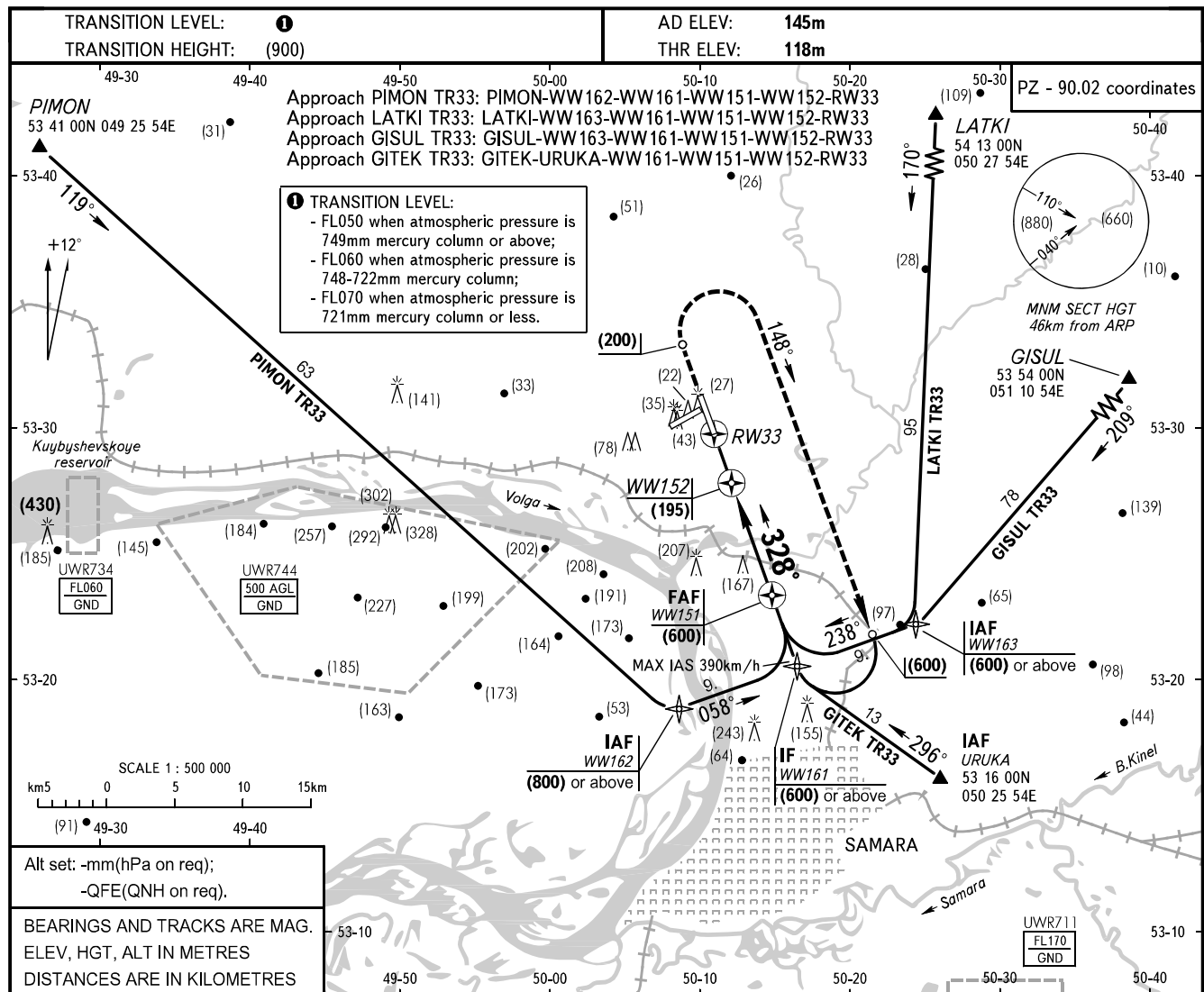


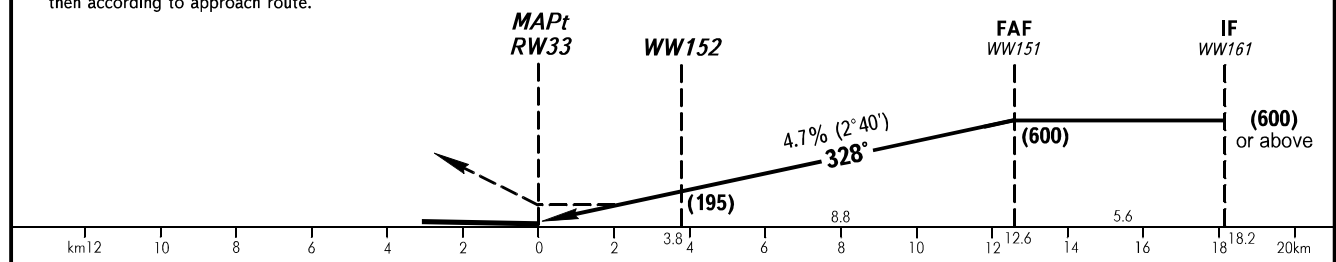
**INSTRUMENT
APPROACH
CHART - ICAO**

APPROACH	124.600
RADAR	128.000

**SAMARA, RUSSIA
KURUMOCH
GNSS RWY 33**



MISSED APPROACH Climb on track 328° to (200), then turn RIGHT on track 148° climbing to (600), then according to approach route.	Distance to WW152	8	7	6	5	4	3	2	1	Distance to RW33	3	2	1
	HAT	565	505	475	425	380	335	285	240		155	110	60



OCA/H		A	B	C	D
Straight-in	GNSS	233(115)	233(115)	233(115)	233(115)
	Approach				
GROUND SPEED	km/h	120	150	180	210
WW151-THR 12591m	min:sec	6.17	5.01	4.11	3.35
RATE OF DESCENT	m/s	1.6	2.0	2.4	2.7

WARNING:

- Arrival and approach-to-land using RNAV procedure based on navigation satellite system GLONASS-GPS are available in the presence of the permission (licence) given by the Federal Air Transport Agency of the Ministry of Transport of Russia.
- The flight crew shall request the permission for GNSS approach from APP controller before passing the point of GNSS APCH RTE beginning.

240	270	300	330	360
3.08	2.47	2.31	2.17	2.06
3.1	3.5	3.9	4.3	4.7