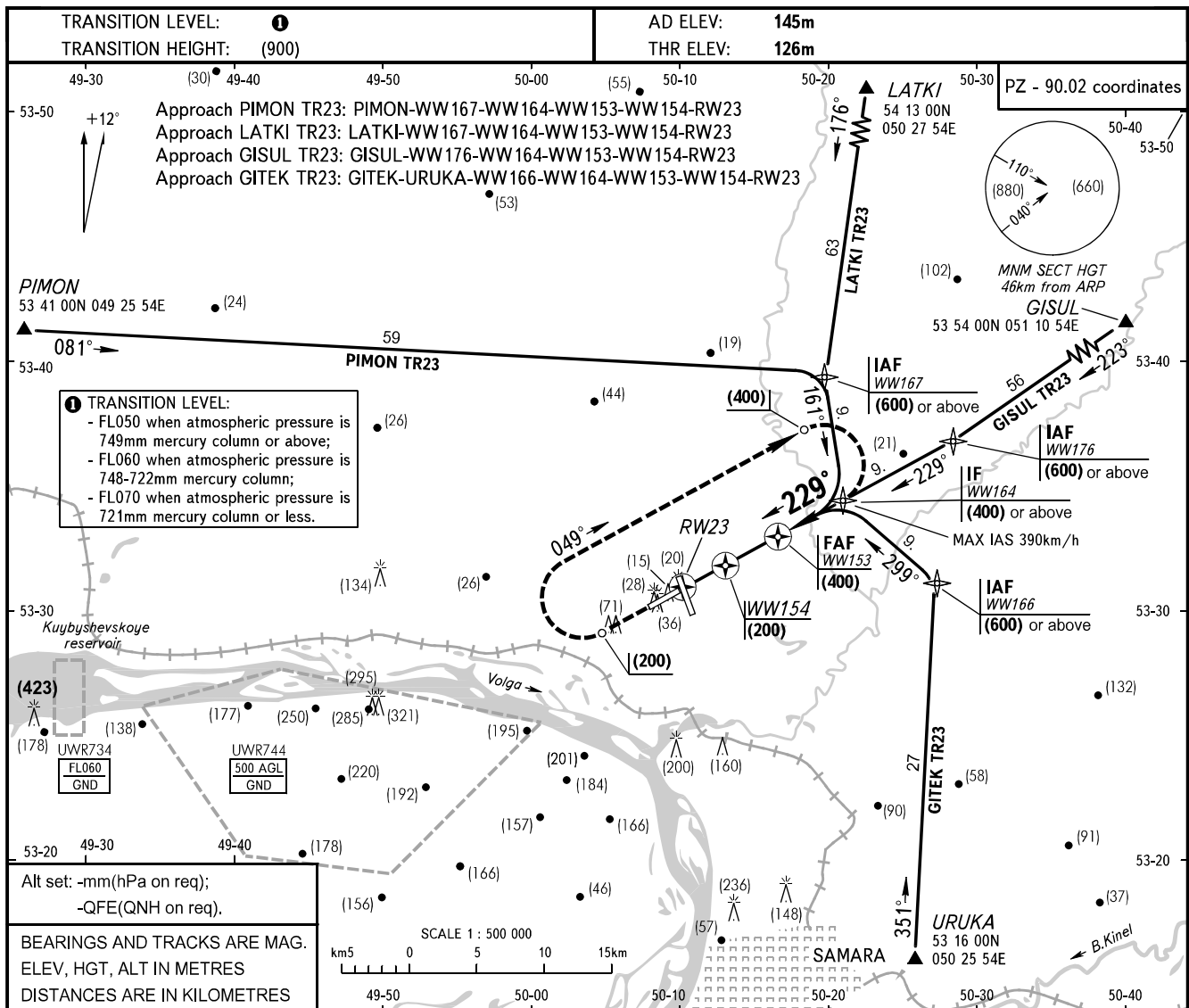


**INSTRUMENT
APPROACH
CHART - ICAO**

APPROACH	124.600
RADAR	128.000

**SAMARA, RUSSIA
KURUMOCH
GNSS RWY 23**



MISSED APPROACH
Climb on track 229° to (200), then turn RIGHT on track 049° climbing to (400), then according to approach route.

Distance to WW154	4	3	2	1	Distance to RW23	3	2	1
HAT	385	340	290	245	HAT	155	110	60

OCA/H		A	B	C	D	WARNING:							
Straight-in	GNSS	271(145)	271(145)	271(145)	271(145)	1. Arrival and approach-to-land using RNAV procedure based on navigation satellite system GLONASS-GPS are available in the presence of permission (licence) given by the Federal Air Transport Agency of the Ministry of Transport of Russia. 2. The flight crew shall request the permission for GNSS approach from APP controller before passing the point of GNSS APCH RTE beginning.							
	Approach												
GROUND SPEED		km/h	120	150	180	210	240	270	300	330	360		
WW153-THR 8312m		min:sec	4.08	3.18	2.45	2.22	2.04	1.50	1.39	1.30	1.23		
RATE OF DESCENT		m/s	1.6	2.0	2.4	2.7	3.1	3.5	3.9	4.3	4.7		