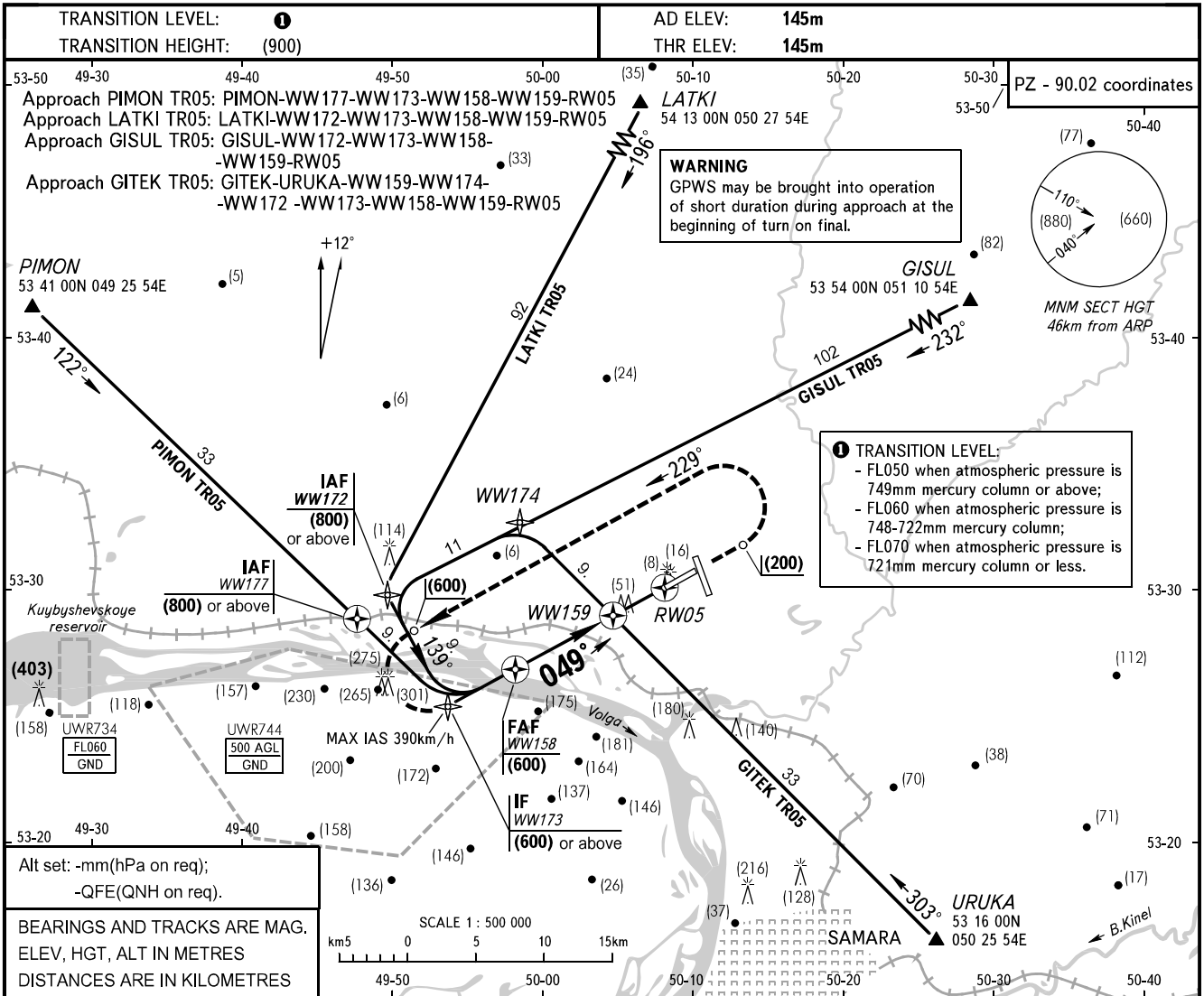


**INSTRUMENT  
APPROACH  
CHART - ICAO**

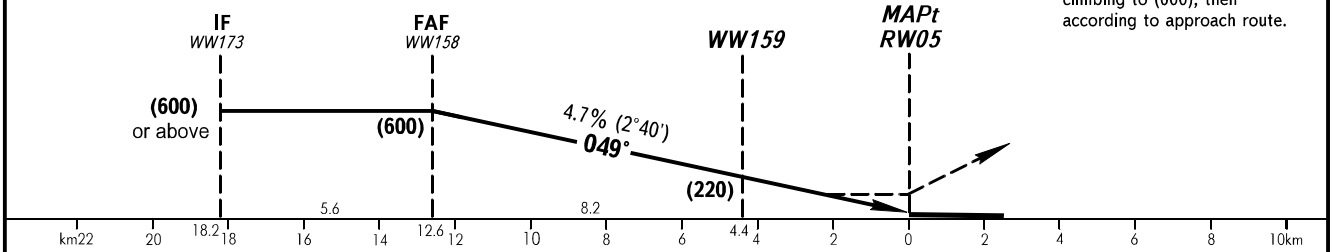
APPROACH	<b>124.600</b>
RADAR	<b>128.000</b>

**SAMARA, RUSSIA  
KURUMOCH  
GNSS RWY 05**



Distance to WW159	8	7	6	5	4	3	2	1	Distance to RW05	4	3	2	1
	HAT	595	545	500	455	405	360	315		270	HAT	200	155

**MISSED APPROACH**  
Climb on track 049° to (200), then turn LEFT on track 229° climbing to (600), then according to approach route.



OCA/H		A	B	C	D	<b>WARNING:</b> 1. Arrival and approach-to-land using RNAV procedure based on navigation satellite system GLONASS-GPS are available in the presence of permission (licence) given by the Federal Air Transport Agency of the Ministry of Transport of Russia. 2. The flight crew shall request the permission for GNSS approach from APP controller before passing the point of GNSS APCH RTE beginning.
Straight-in	<b>GNSS</b>	272(126)	272(126)	272(126)	272(126)	
	Approach					

GROUND SPEED	km/h	120	150	180	210	240	270	300	330	360
WW158-THR 12602m	min:sec	6.17	5.01	4.11	3.35	3.08	2.47	2.31	2.17	2.06
RATE OF DESCENT	m/s	1.6	2.0	2.4	2.7	3.1	3.5	3.9	4.3	4.7