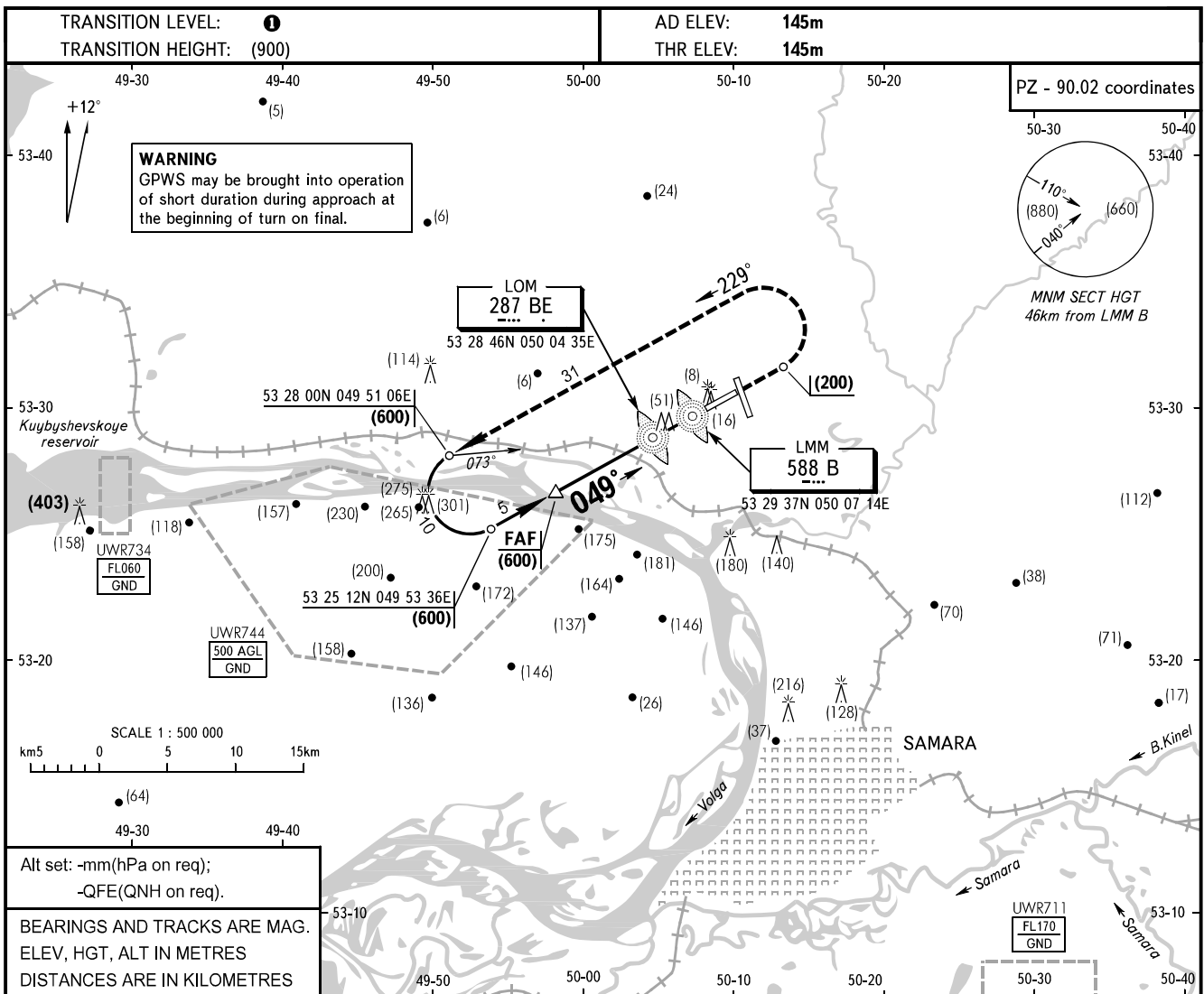


**INSTRUMENT
APPROACH
CHART - ICAO**

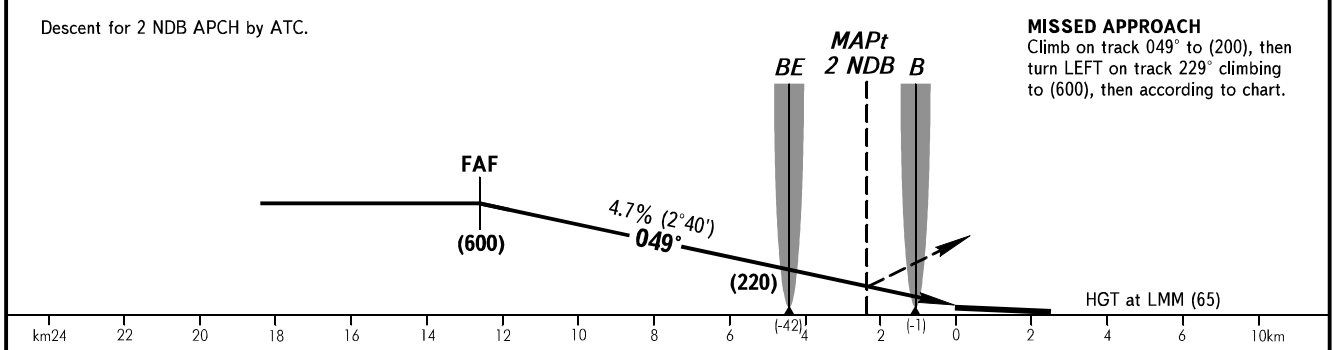
RADAR	128.000
TOWER	118.200

**SAMARA, RUSSIA
KURUMOCH
2 NDB RWY 05**



Alt set: -mm(hPa on req);
-QFE(QNH on req).

BEARINGS AND TRACKS ARE MAG.
ELEV, HGT, ALT IN METRES
DISTANCES ARE IN KILOMETRES



MISSED APPROACH
Climb on track 049° to (200), then turn LEFT on track 229° climbing to (600), then according to chart.

OCA/H		A	B	C	D
Straight-in	2 NDB	272(126)	272(126)	272(126)	272(126)
	With FAF	272(126)	272(126)	272(126)	272(126)
Approach	WO FAF	597(451)	597(451)	597(451)	597(451)

① TRANSITION LEVEL:

- FL050 when atmospheric pressure is 749mm mercury column or above;
- FL060 when atmospheric pressure is 748-722mm mercury column;
- FL070 when atmospheric pressure is 721mm mercury column or less.

GROUND SPEED	km/h	120	150	180	210	240	270	300	330	360
LOM-THR 4412m	min:sec	2.12	1.46	1.28	1.16	1.06	0.59	0.53	0.48	0.44
RATE OF DESCENT	m/s	1.6	2.0	2.4	2.7	3.1	3.5	3.9	4.3	4.7

CHANGE: ELEV, LOM, LMM COORD