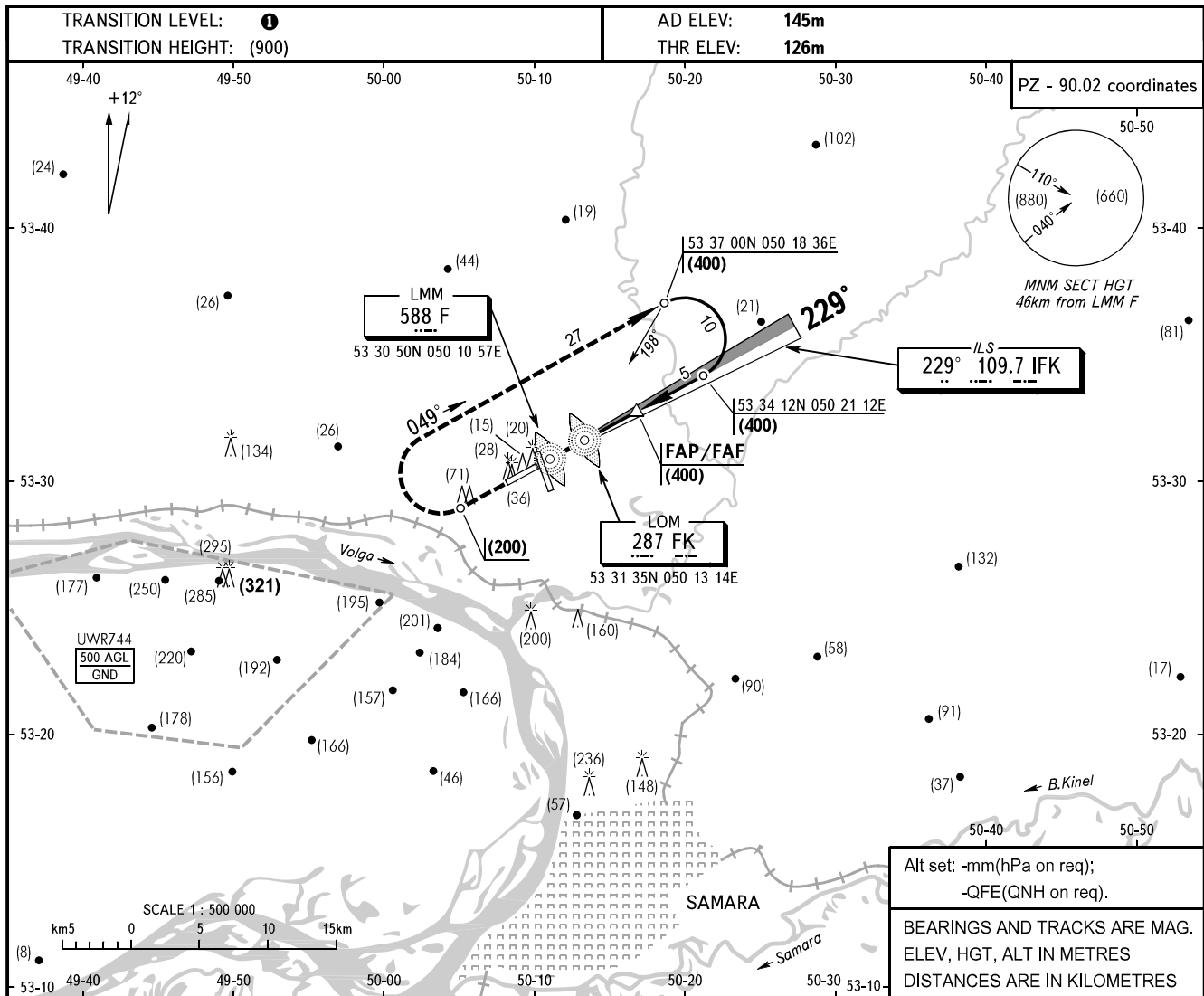


**INSTRUMENT
APPROACH
CHART - ICAO**

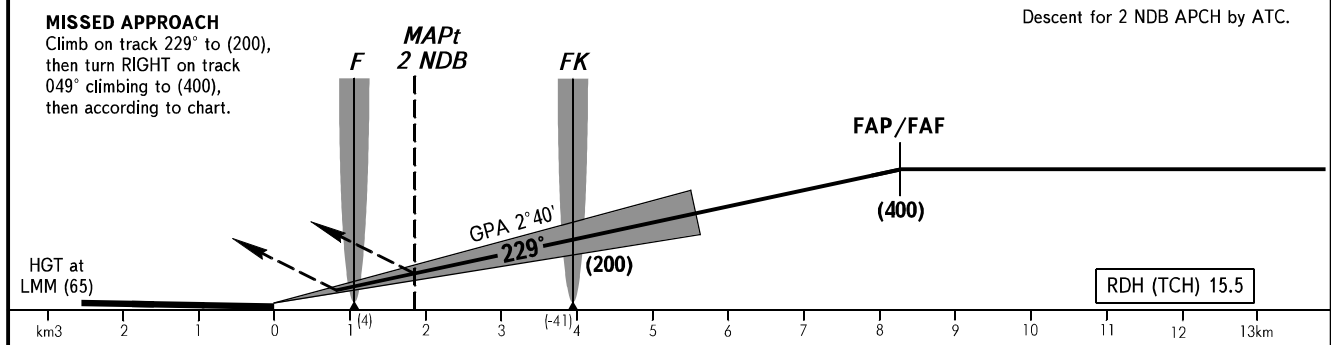
SAMARA, RUSSIA
KURUMOCH
ILS, 2 NDB RWY 23

RADAR	128.000
TOWER	118.200



Alt set: -mm(hPa on req);
-QFE(QNH on req).

BEARINGS AND TRACKS ARE MAG.
ELEV, HGT, ALT IN METRES
DISTANCES ARE IN KILOMETRES



		OCA/H	A	B	C	D
Straight-in	CAT I		169(43)	172(46)	175(49)	179(53)
	Approach	2 NDB				
		With FAF	231(105)	231(105)	231(105)	231(105)
	WO FAF	231(105)	231(105)	231(105)	231(105)	

① TRANSITION LEVEL:
- FL050 when atmospheric pressure is 749mm mercury column or above;
- FL060 when atmospheric pressure is 748-722mm mercury column;
- FL070 when atmospheric pressure is 721mm mercury column or less.

GROUND SPEED	km/h	120	150	180	210	240	270	300	330	360
LOM-THR 3925m	min:sec	1.58	1.34	1.19	1.08	0.59	0.53	0.47	0.43	0.39
RATE OF DESCENT (Grad 4.7%)	m/s	1.6	2.0	2.4	2.7	3.1	3.5	3.9	4.3	4.7

CHANGE: ELEV, LOM, LMM COORD, RDH