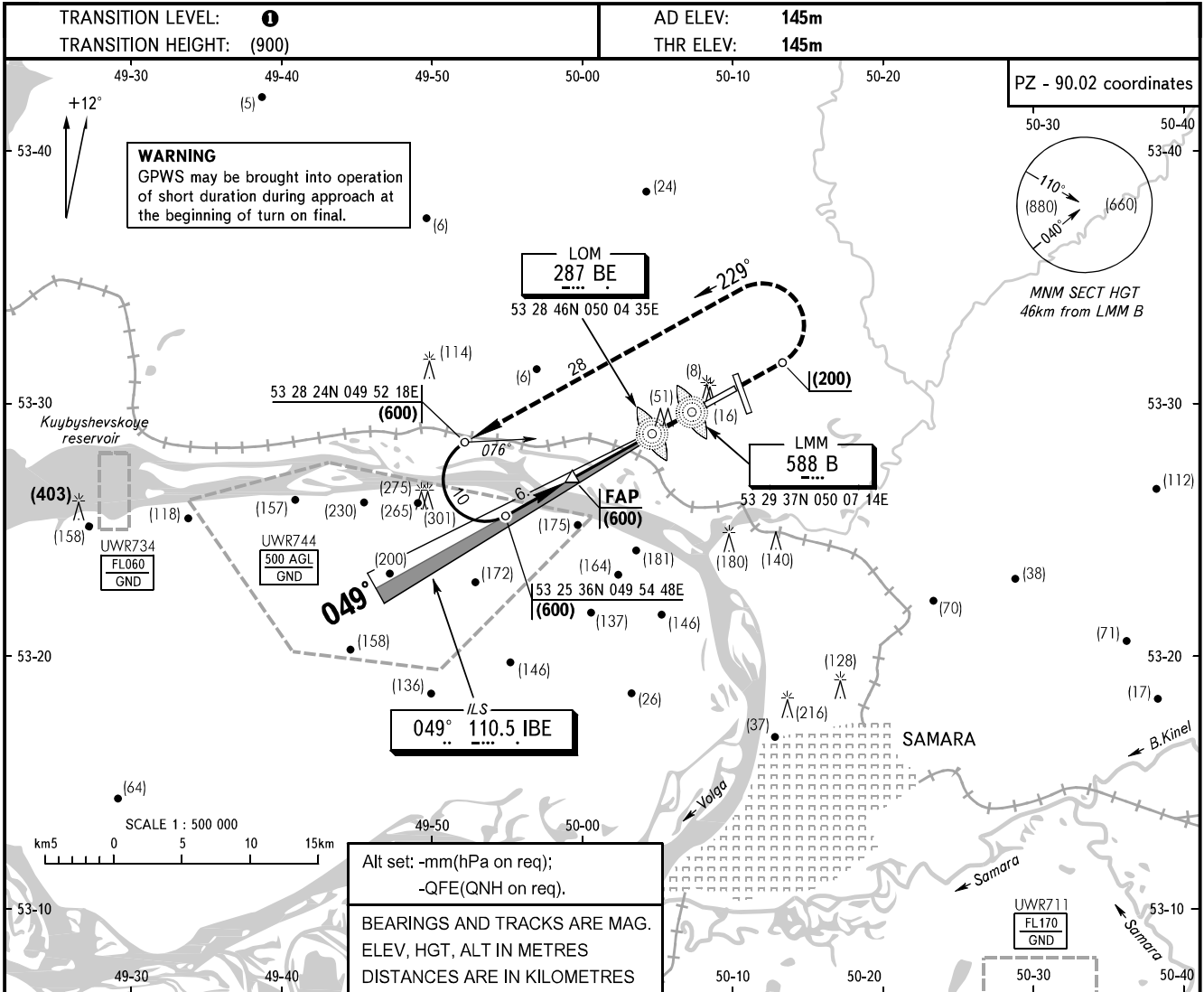


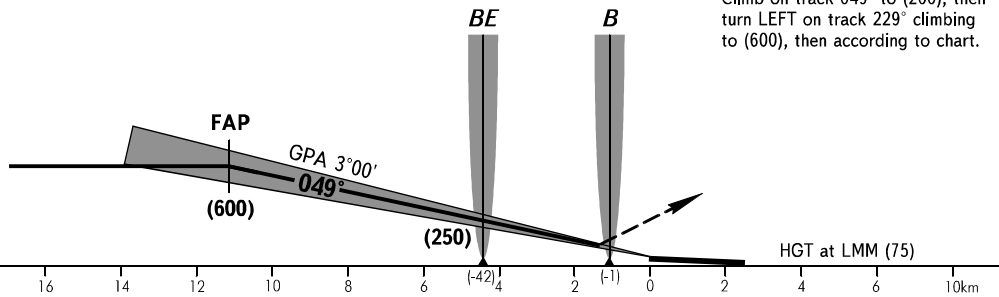
**INSTRUMENT
APPROACH
CHART - ICAO**

| | |
|-------|---------|
| RADAR | 128.000 |
| TOWER | 118.200 |

**SAMARA, RUSSIA
KURUMOCH
ILS RWY 05**



MISSED APPROACH
Climb on track 049° to (200), then turn LEFT on track 229° climbing to (600), then according to chart.



| OCA/H | | A | B | C | D | | | | | | | | |
|-----------------|--------------|---------|---------|---------|---------|------|------|------|------|------|------|------|------|
| Straight-in | CAT I | 188(42) | 191(45) | 194(48) | 198(52) | | | | | | | | |
| | Approach | | | | | | | | | | | | |
| GROUND SPEED | | km/h | 150 | 180 | 210 | 240 | 270 | 300 | 330 | 360 | 390 | 420 | 450 |
| LOM-THR 4412m | | min:sec | 1.46 | 1.28 | 1.16 | 1.06 | 0.59 | 0.53 | 0.48 | 0.44 | 0.41 | 0.38 | 0.35 |
| RATE OF DESCENT | | m/s | 2.2 | 2.6 | 3.0 | 3.5 | 3.9 | 4.3 | 4.8 | 5.2 | 5.6 | 6.1 | 6.5 |

① **TRANSITION LEVEL:**

- FL050 when atmospheric pressure is 749mm mercury column or above;
- FL060 when atmospheric pressure is 748-722mm mercury column;
- FL070 when atmospheric pressure is 721mm mercury column or less.