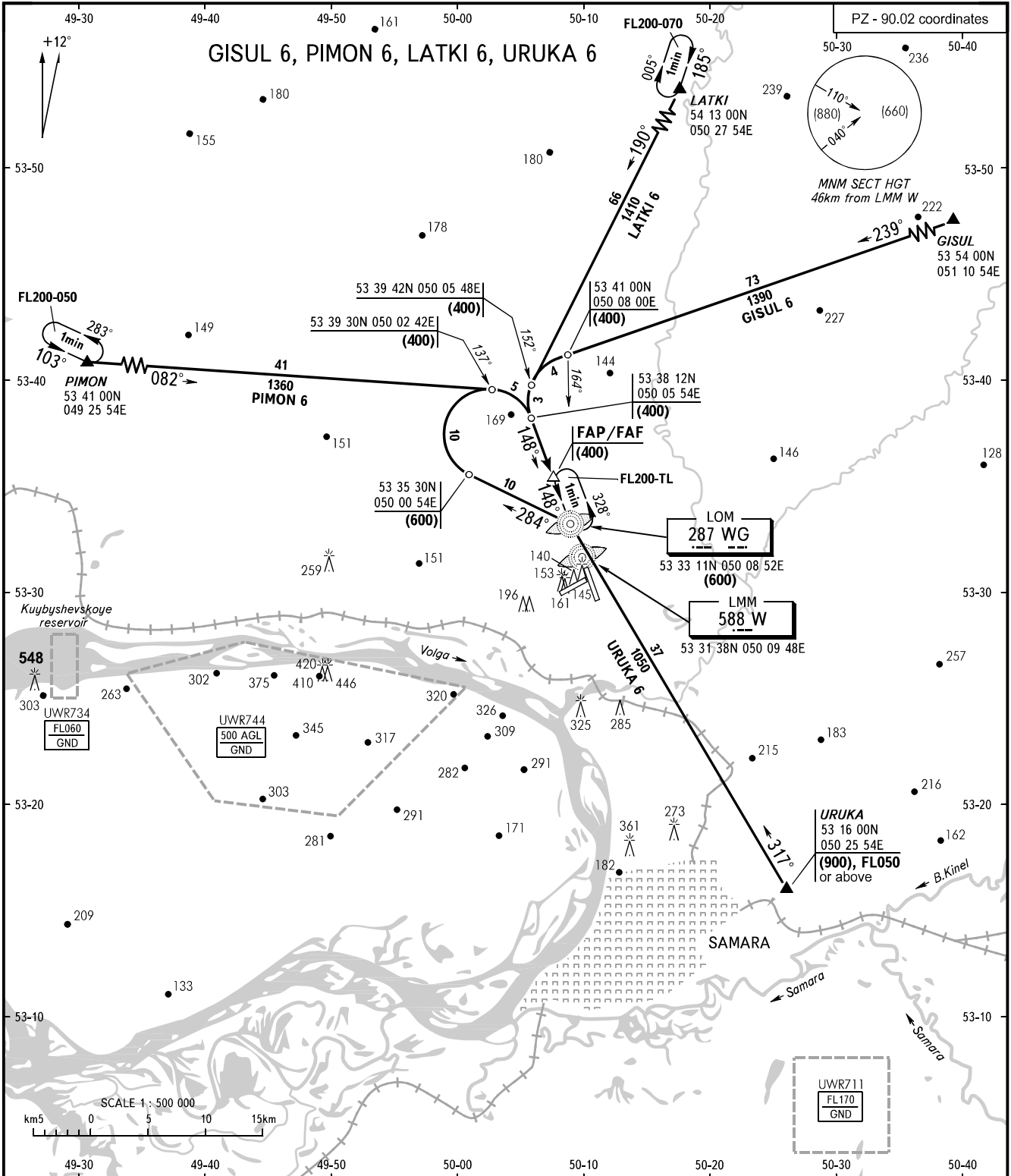


STANDARD ARRIVAL CHART
INSTRUMENT (STAR) - ICAO

SAMARA, RUSSIA
KURUMOCH
RWY 15

TRANSITION
LEVEL : ①



APPROACH RADAR 124.600
RADAR 128.000

WARNING:
1. FL by ATC.
2. STAR GISUL 6 shall be used only when approaching from CRP PEKUR.

① **TRANSITION LEVEL:**
- FL050 when atmospheric pressure is 749mm mercury column or above;
- FL060 when atmospheric pressure is 748-722mm mercury column;
- FL070 when atmospheric pressure is 721mm mercury column or less.

BEARINGS AND TRACKS ARE MAGNETIC
ALTITUDES, HEIGHTS AND ELEVATIONS ARE IN METRES
DISTANCES ARE IN KILOMETRES