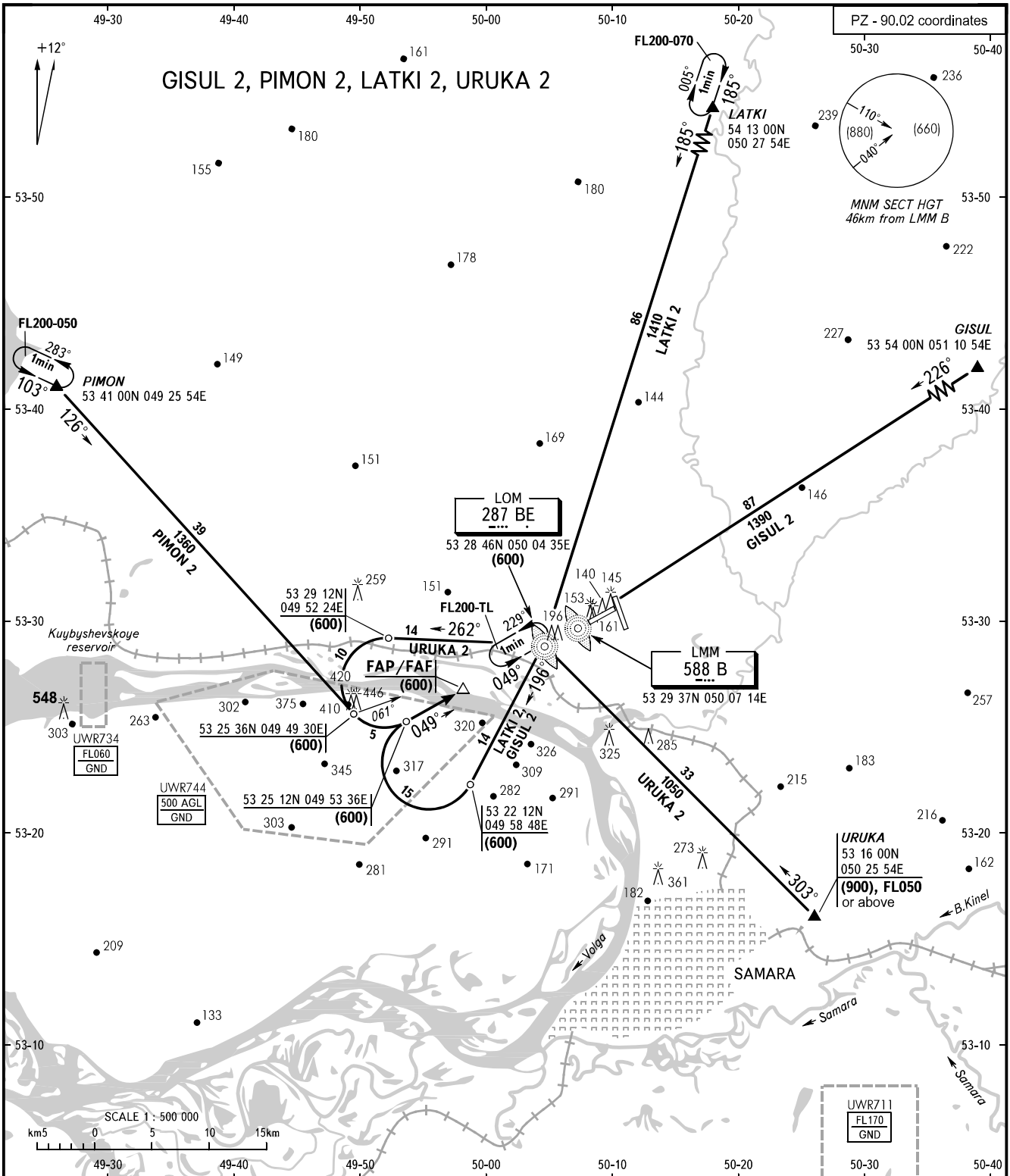


STANDARD ARRIVAL CHART
INSTRUMENT (STAR) - ICAO

TRANSITION
LEVEL : **1**

SAMARA, RUSSIA
KURUMOCH
RWY 05



APPROACH RADAR 124.600
RADAR 128.000

WARNING:

1. FL by ATC.
2. STAR GISUL 2 shall be used only when approaching from CRP PEKUR.
3. GPWS may be brought into operation of short duration during approach at the beginning of turn on final.

1 TRANSITION LEVEL:

- FL050 when atmospheric pressure is 749mm mercury column or above;
- FL060 when atmospheric pressure is 748-722mm mercury column;
- FL070 when atmospheric pressure is 721mm mercury column or less.

BEARINGS AND TRACKS ARE MAGNETIC
ALTITUDES, HEIGHTS AND ELEVATIONS ARE IN METRES
DISTANCES ARE IN KILOMETRES

CHANGE: URUKA 2 after LOM BE