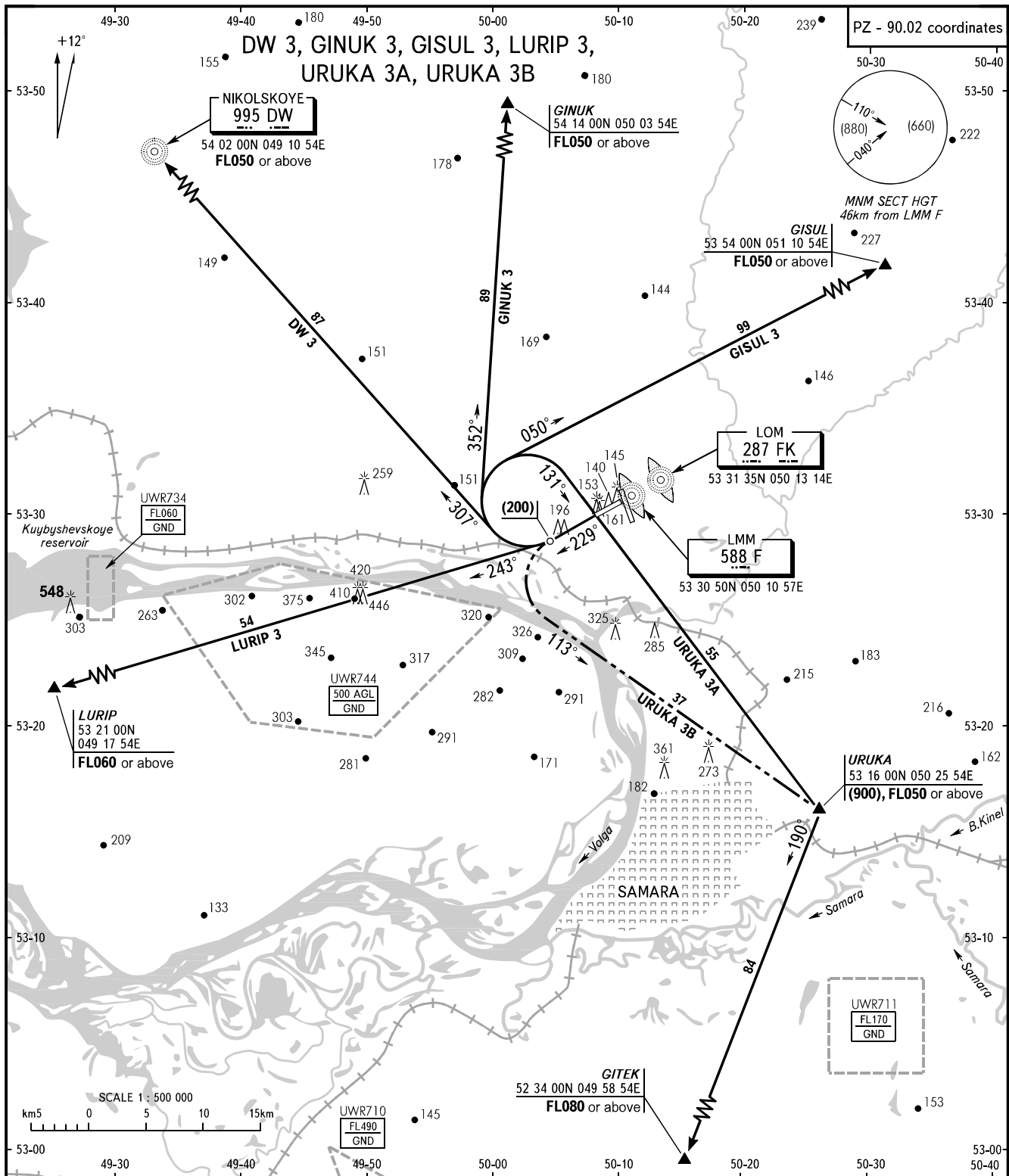


STANDARD DEPARTURE CHART
INSTRUMENT (SID) - ICAO

TRANSITION
HEIGHT : (900)

SAMARA, RUSSIA
KURUMOCH
RWY 23



TOWER	118.200
RADAR	128.000
APPROACH	124.600

NOTE
Take-off shall be carried out according to noise abatement procedures and flight to be conducted in accordance with ACFT performance requirements.

BEARINGS AND TRACKS ARE MAGNETIC
ALTITUDES, HEIGHTS AND ELEVATIONS ARE IN METRES
DISTANCES ARE IN KILOMETRES

CHANGE: LOM, LMM COORD