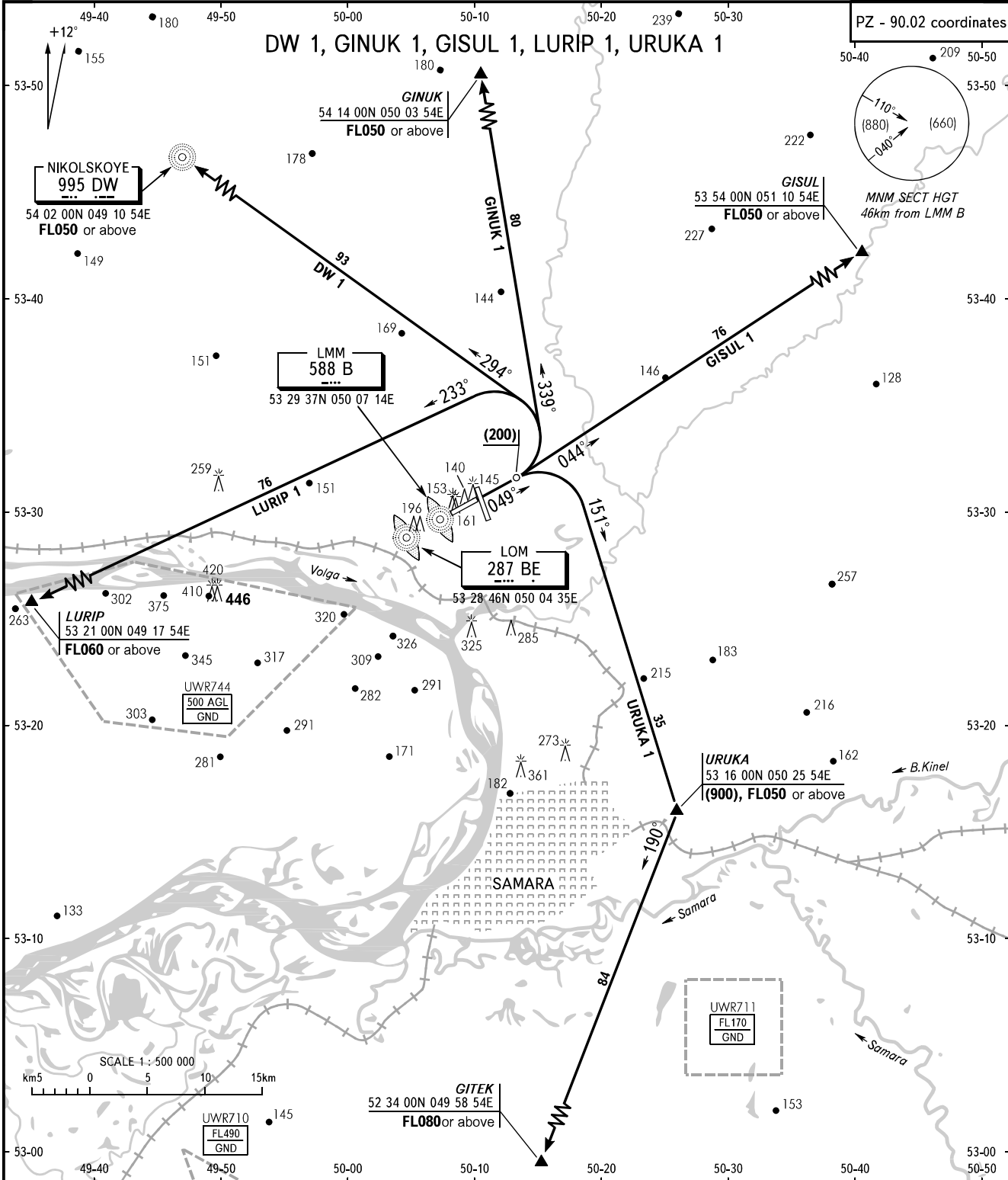


STANDARD DEPARTURE CHART  
INSTRUMENT (SID) - ICAO

TRANSITION  
HEIGHT : (900)

SAMARA, RUSSIA  
KURUMOCH  
RWY 05



TOWER	118.200
RADAR	128.000
APPROACH	124.600

**NOTE**  
Take-off shall be carried out according to noise abatement procedures and flight to be conducted in accordance with ACFT performance requirements.

BEARINGS AND TRACKS ARE MAGNETIC  
ALTITUDES, HEIGHTS AND ELEVATIONS ARE IN METRES  
DISTANCES ARE IN KILOMETRES