

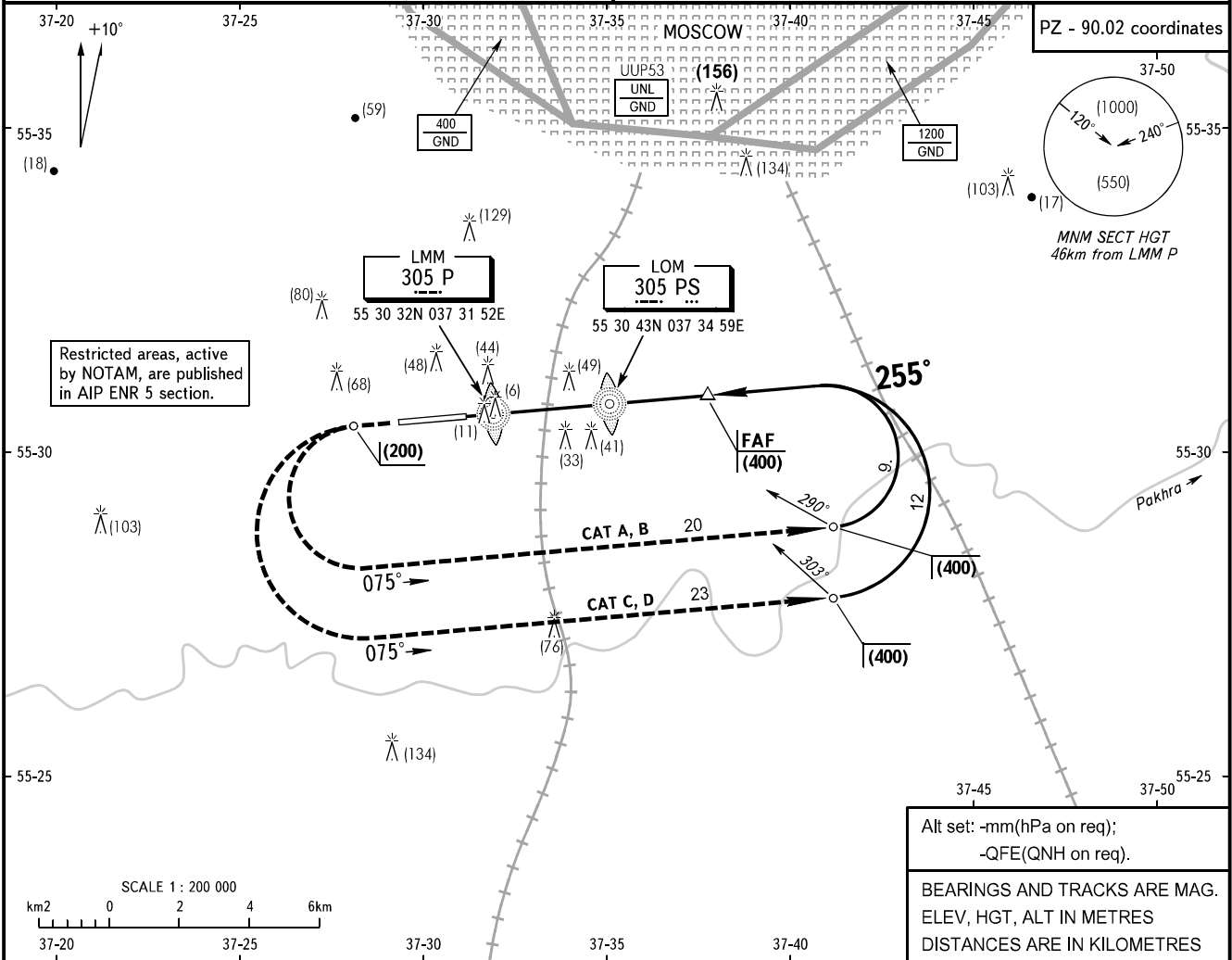
**INSTRUMENT  
APPROACH  
CHART - ICAO**

OSTAFYEVO TOWER **119.2**

**OSTAFYEVO, RUSSIA**  
OSTAFYEVO  
**2 NDB RWY 26**

TRANSITION LEVEL: **1**  
TRANSITION HEIGHT: **1**

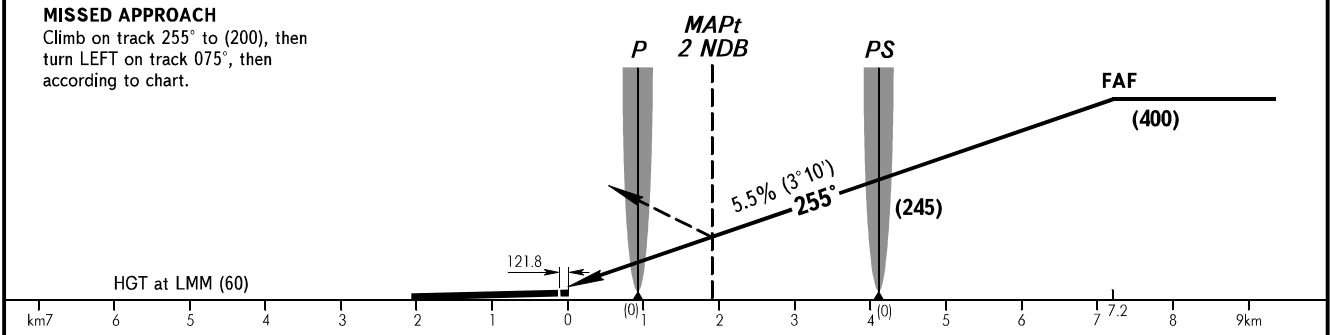
AD ELEV: **171.7m**  
THR ELEV: **171.0m**



Alt set: -mm(hPa on req);  
-QFE(QNH on req).  
BEARINGS AND TRACKS ARE MAG.  
ELEV, HGT, ALT IN METRES  
DISTANCES ARE IN KILOMETRES

**MISSED APPROACH**

Climb on track 255° to (200), then turn LEFT on track 075°, then according to chart.



OCA/H		A	B	C	D
Straight-in Approach					
	<b>2 NDB with FAF</b>	301(130)	301(130)	301(130)	301(130)

**WARNING**  
**1** By ATIS of VNUKOVO or DOMODEDOVO AD.

GROUND SPEED	km/h	150	180	210	240	270	300	330	360	390	420	450
LOM-THR 4120m	min:sec	1.39	1.22	1.11	1.02	0.55	0.49	0.45	0.41	0.38	0.35	0.33
RATE OF DESCENT	m/s	2.3	2.8	3.2	3.7	4.1	4.6	5.1	5.5	6.0	6.4	6.9

CHANGE: COORD, MNM SEC HGT