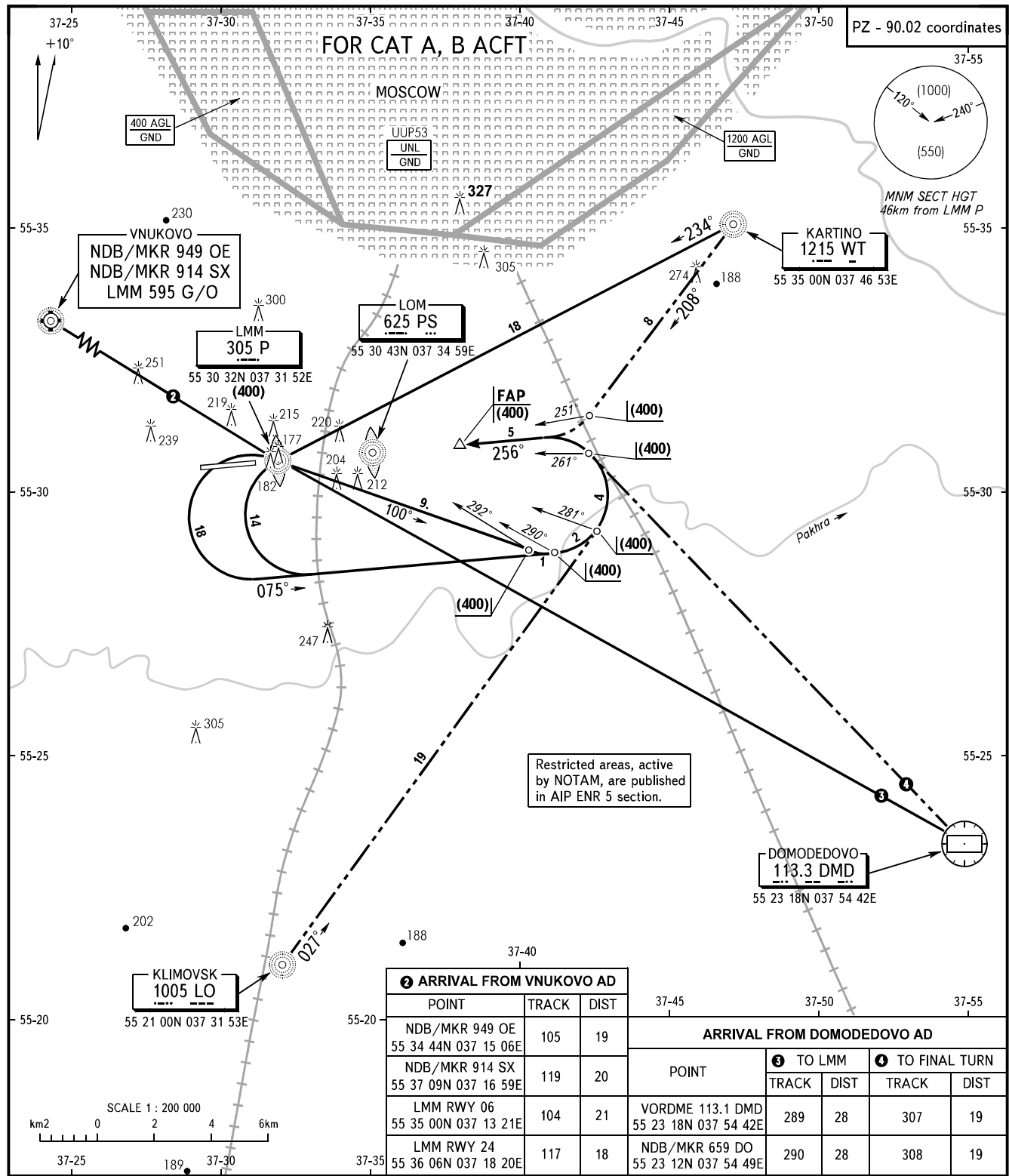


**OSTAFYEVO, RUSSIA**  
OSTAFYEVO  
RWY 26

STANDARD ARRIVAL CHART  
INSTRUMENT (STAR) - ICAO

TRANSITION  
LEVEL : **1**



2 ARRIVAL FROM VNUKOVO AD			ARRIVAL FROM DOMODEDOVO AD					
POINT	TRACK	DIST						
NDB/MKR 949 OE 55 34 44N 037 15 06E	105	19	3 TO LMM				4 TO FINAL TURN	
NDB/MKR 914 SX 55 37 09N 037 16 59E	119	20						
LMM RWY 06 55 35 00N 037 13 21E	104	21	VORDME 113.1 DMD 55 23 18N 037 54 42E	289	28	307	19	
LMM RWY 24 55 36 06N 037 18 20E	117	18	NDB/MKR 659 DO 55 23 12N 037 54 49E	290	28	308	19	

MOSCOW APPROACH See Moscow Area Chart  
DOMODEDOVO RADAR 127.7  
VNUKOVO RADAR 126.0  
OSTAFYEVO TOWER 119.2

**WARNING:**  
1. 1 By ATIS of VNUKOVO or DOMODEDOVO AD.  
2. Approach-to-land shall be carried out under radar control and ATC direction only.

BEARINGS AND TRACKS ARE MAGNETIC  
ALTITUDES, HEIGHTS AND ELEVATIONS ARE IN METRES  
DISTANCES ARE IN KILOMETRES