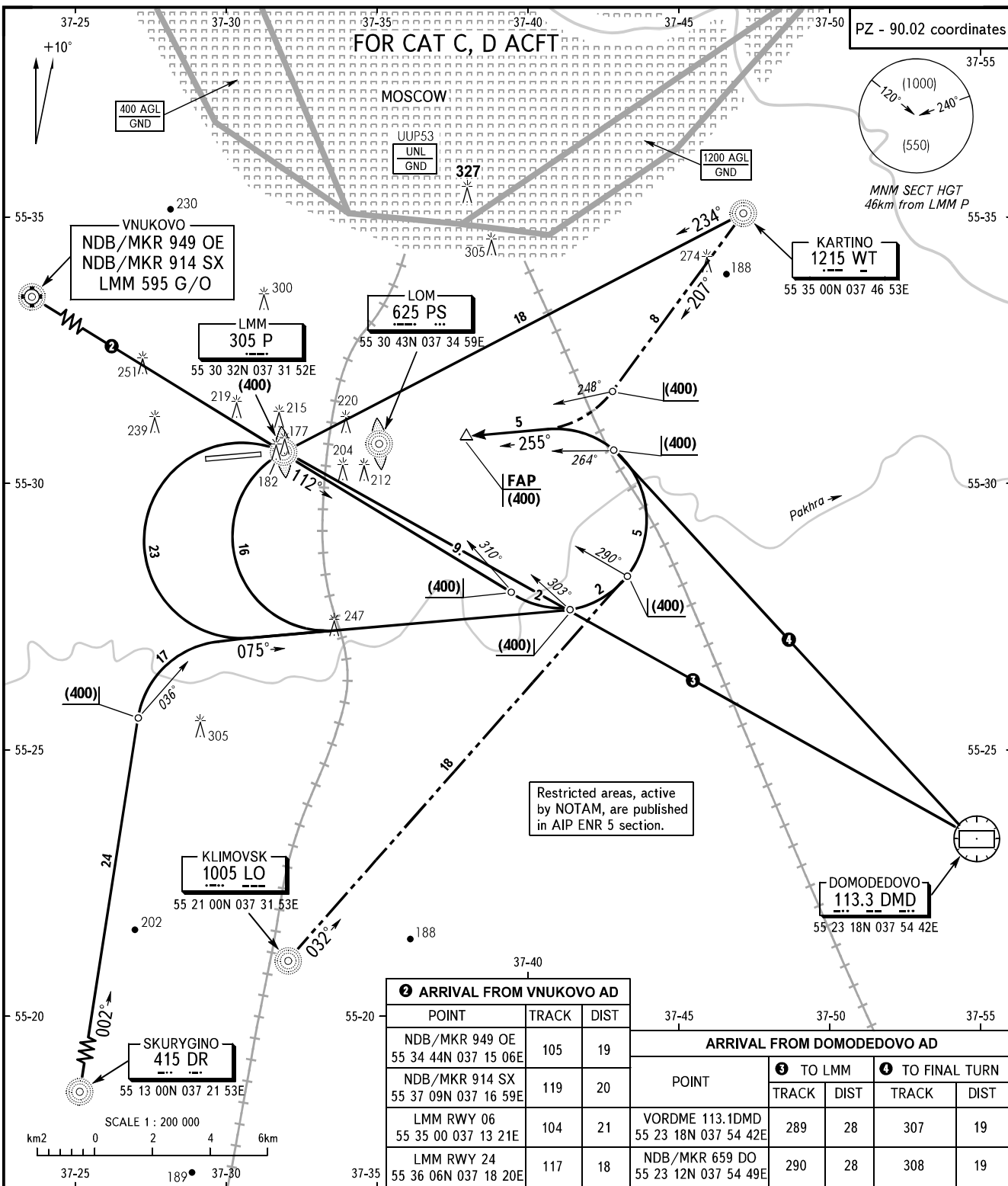


STANDARD ARRIVAL CHART
INSTRUMENT (STAR) - ICAO

OSTAFYEVO, RUSSIA
OSTAFYEVO
RWY 26

TRANSITION
LEVEL : 1



MOSCOW APPROACH See Moscow Area Chart
DOMODEDOVO RADAR 127.7
VNUKOVO RADAR 126.0
OSTAFYEVO TOWER 119.2

WARNING:
1. 1 By ATIS of VNUKOVO or DOMODEDOVO AD.
2. Approach-to-land shall be carried out under radar control and ATC direction only.

BEARINGS AND TRACKS ARE MAGNETIC
ALTITUDES, HEIGHTS AND ELEVATIONS ARE IN METRES
DISTANCES ARE IN KILOMETRES

CHANGE: 3, 4