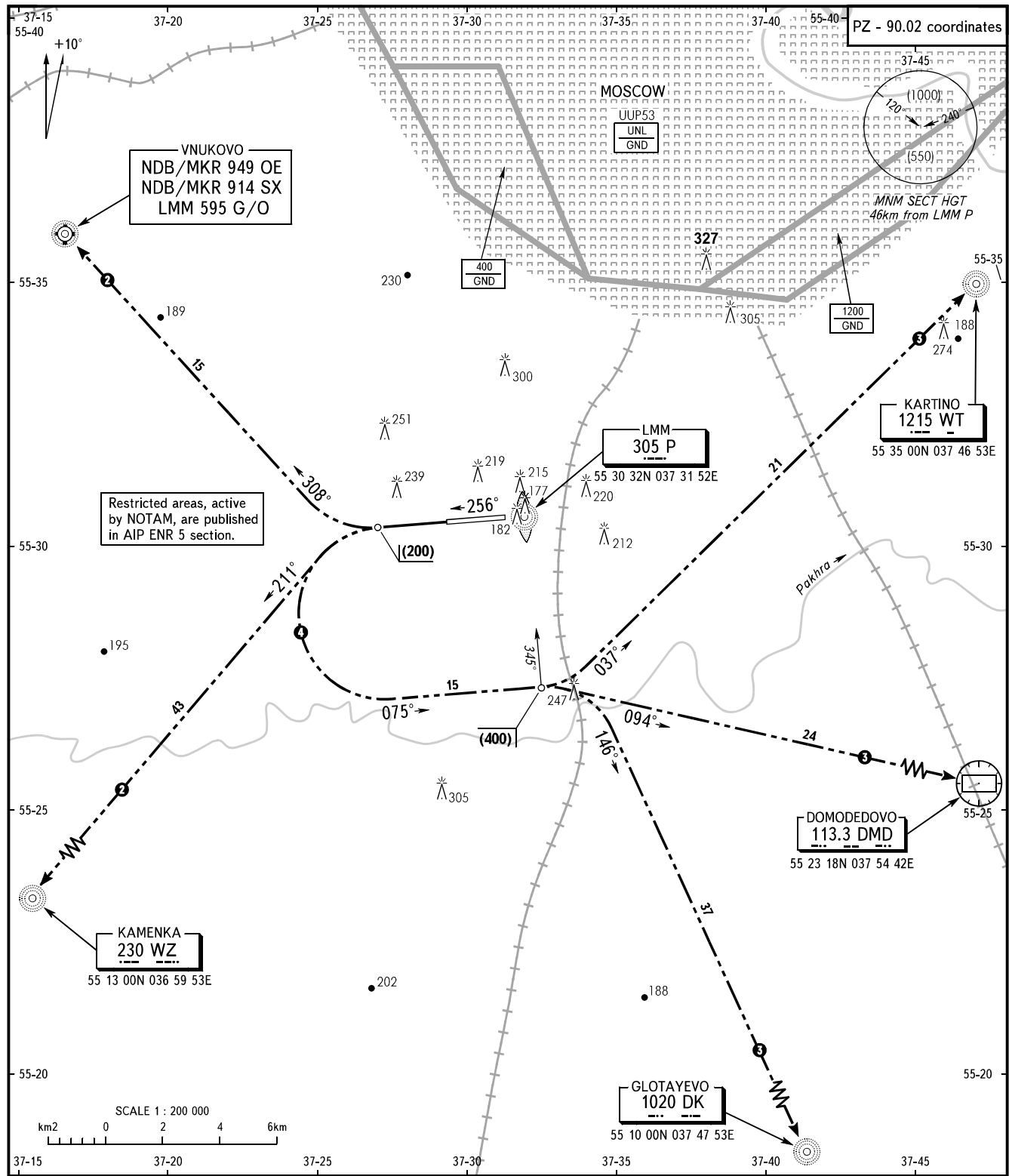


STANDARD DEPARTURE CHART
INSTRUMENT (SID) - ICAO

TRANSITION
HEIGHT : 1

OSTAFYEVO, RUSSIA
OSTAFYEVO
RWY 26



OSTAFYEVO	TOWER	119.2
DOMODEDOVO	RADAR	127.7
VNUKOVO	RADAR	126.0
MOSCOW	APPROACH	See Moscow Area Chart

- WARNING:**
- 1 By ATIS of VNUKOVO or DOMODEDOVO AD
 - 2 DEP under Vnuково-Radar direction
 - 3 DEP under Domodedovo-Radar direction
 - 4 IAS 360km/h, bank 20°, radius 3.0km

BEARINGS AND TRACKS ARE MAGNETIC
ALTITUDES, HEIGHTS AND ELEVATIONS ARE IN METRES
DISTANCES ARE IN KILOMETRES

CHANGE: COORD, MNM SECT HGT